



ANNUAL REPORT 2012/13

Building on Past Successes

OUR **VISION**

All Kenyan Communities giving and working together in a prosperous nation.

OUR **MISSION**

KCDF promotes sustainable development of communities through social investment, resource development, endowment building and grant making.

OUR **VALUES**

- Respect for the rights and dignity of every human being.
- Equity.
- Honesty and transparency.
- Commitment to social justice philanthropy.
- Working with others.
- Learning and Innovations.



Building on Past Successes
in Response to Emergent Development Challenges

2012 - 2013

© KCDF 2014

Produced by the Communications Department

Editor: Melvin Chibole

Associate Editor: Natasha Murigu

Art Director: Muchiri Njoroge

contents



My Word

Word from the Foundation Chair
Word from the CEO

06



Programme update

Urban Livelihoods and Economic Development Programme
Food Security Programme
Girl Child Development & Empowerment Programme
Education & Education Scholarships Programme
Building Capacity for Local Community Resources Mobilization
Strengthening of Local Civil Society Organizations
Policy, Research and Advocacy Programme
Youth Development Programme

09



The Numbers

Significant accounting policy

34



KCDF Grantees

Urban Livelihoods and Economic Development Programme
Youth Development Programme
Entrenching Local Resources
Food Security
Education Scholarship Programme
Girl Child Programme Grantees
Strengthening of Local Civil Society Organization

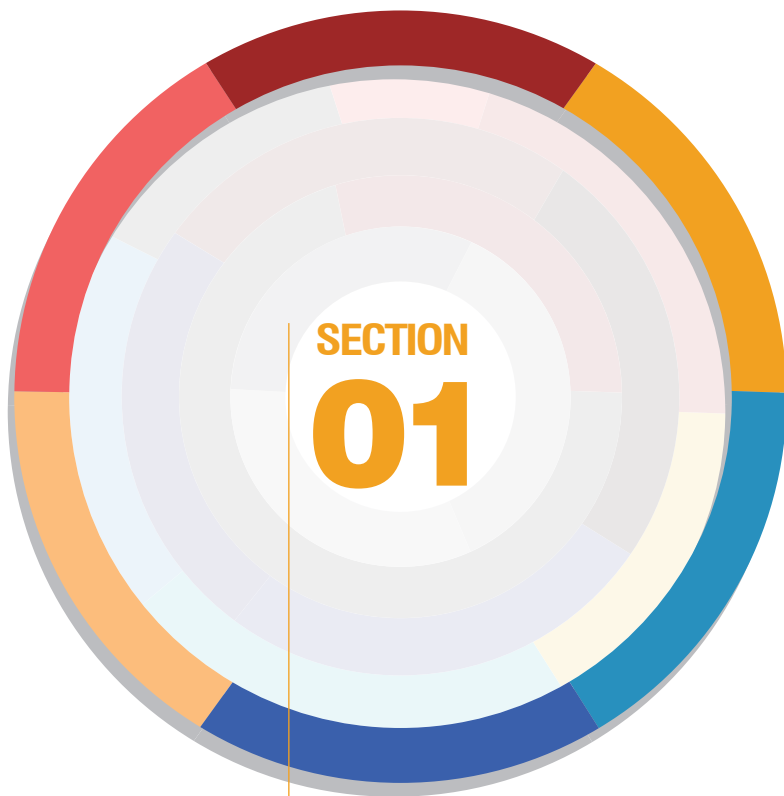
40



KCDF Trust Report

Word from the KCDF Trust Chair
KCDF Trust Financials

59



My Word



Word from the Foundation Chair

I would like to take this early opportunity to recognize with great appreciation all those who made our work with communities across the country both rewarding and transforming in the past year. I cannot over-emphasize the fact that the achievements presented in this report reflect the spirit of co-operation and commitment of our implementing partners throughout the country. While we provided capacity development and grants for the programmes, our implementing partners worked hard to ensure that their impact on local communities was maximized.

In the same breadth, we would also like to thank our funding partners who continue to show confidence in our model of community sustainable development by sharing valuable resources and expertise with us.

The reporting year was a significant year both in our internal and external environment. The country went through a peaceful election which subliminally slowed down programme implementation in most parts of the country in the first quarter of the year but it gradually picked up in the subsequent quarter. The country also marked its jubilee year of independence, a major milestone for our beloved country.

Internally, KCDF went through a comprehensive review process that looked at both its successes and challenges during its five year strategic plan (2009 – 2013). The review process gave us an opportunity to use the observations and learnings to develop KCDF's sixth strategic plan (2014 – 2018) that will set the direction for the next stage of our work. The new strategic plan has considered the challenges of the previous strategy (2009-2013) and revamped the foundation to achieve more impact with more cost effective operations.

Bringing this ambitious strategy to life however requires us to review every aspect of our work. The changes we plan to put in place in the next year, while challenging, will make us more efficient and better able to make a difference. Some of the key changes to be made include a deliberate focus on board and staff capacity while looking at ways of integrating our approach to development with a rights-based focus. We also want to strengthen a team approach as part of strengthening institutional stability.

Lastly, all this positive developments would not have happened without a dedicated and passionate staff and board. I am proud and humbled to be associated with all the achievements that have been facilitated by the two arms. We are committed to ensuring all our programmes reach an even higher standard in the year ahead.

Atia Yahya,
Foundation Chair – KCDF



Word from the CEO

Welcome to this annual report that captures our activities for the period 2012-2013. This was a significant year in the life of KCDF which was characterized by immense introspection, learning and taking stock on how we have fared as an organisation in promoting sustainable development in communities as we marked the end year of KCDF's fifth Strategic Plan for the period 2009 - 2013.

An organizational-wide review conducted in the reporting period brought to the fore the dynamic environment that we work in as well as giving the organization an opportunity of finding new ways to learn from its experiences, while challenging ourselves to become more effective, efficient and credible in our core mandate. This reflection stage subsequently set the stage for KCDF to come up with a new strategic plan that has been developed after a great deal of shared thinking and wide consultations that will steer our work for the next five years (2014 – 2018).

The move to the new strategy will however not be made overnight. Instead, 2014 will be a period of transition, examining our work and partnerships and planning the changes required to refocus our work in line with our new priorities so as to achieve a seamless transition. The prime objective is to work in such a way that we *can do less to be more*, which implies working with fewer partners but with more in-depth relationships. The year 2013 was also an election year thus we experienced relatively slow programme implementation across most of our target areas in the first half of the year informed by uncertainties of the highly volatile elections. Programme implementation however picked up after a peaceful plebiscite.

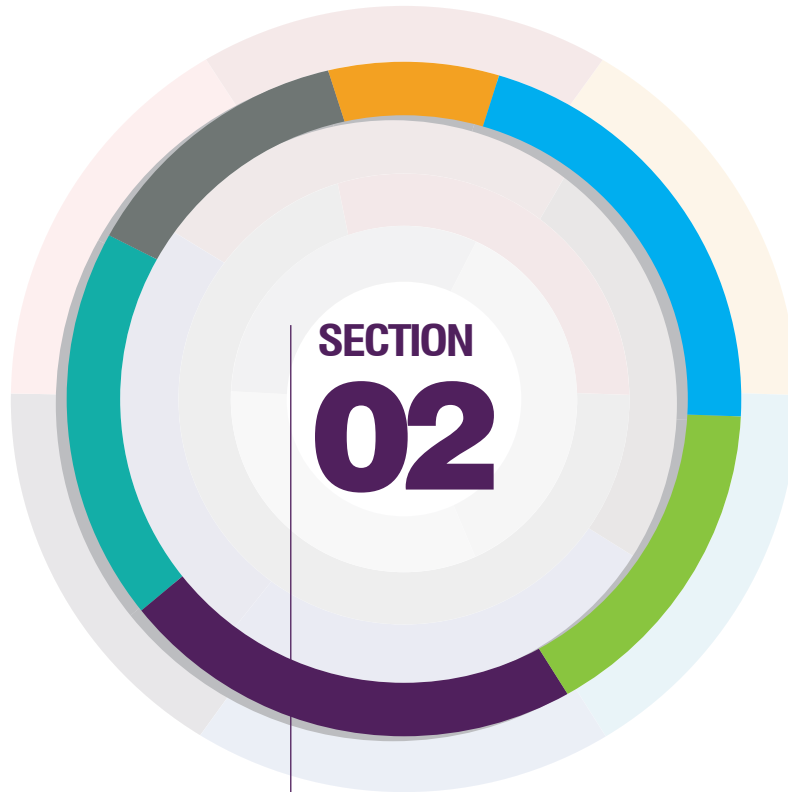
In the year under review, we reached out to our key partners and direct beneficiaries across the country. Across the board, we had an increase in the number of programme partners, for instance we increased our Urban Livelihood Programme from 20 to 27 partners. To ensure food security in arid and semi-arid areas, KCDF through its Food Security Programme continued building the resilience of communities by promoting an integrated model that tied food security to sustainable access to water for irrigation, climate adaptation initiatives and enhanc-

ing capacities of communities by linking them to service and extension providers reaching more than 3000 beneficiaries directly.

Meanwhile, our advocacy and policy work has had increasing impact. KCDF was part of civil society organisations that lobbied successfully for the passing of the Unclaimed Financial Assets Act as well as the Public Benefit Organisation Act in the previous year. In the coming year, KCDF shall continue to engage and push for their implementation as they both will impact positively on the ordinary lives of needy communities. Our strategy of promoting local giving continued to bear fruit in the year under review. A number of new companies joined in supporting communities through our different programmes. Some of these companies include Hotpoint Appliances Limited, Barclays Bank of Kenya and Citi Foundation.

Lastly, everything we continue to do would not happen without the sustained support from all our funders both local and international, we thank you. I invite you to read the stories of lives being changed through our work.

Janet Mawiyoo
CEO - KCDF



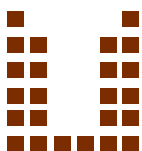
SECTION
02

**Programme
Updates**

Welcome to the programme reporting section. We are excited about the immense achievements of the period under review. In the same way, we are very rich in lessons learnt and experiences of the last year. The period 2012/2013 saw KCDF programmes experience a steep

curve of growth in all the three aspects of funding, partnerships and geographical expansion and reach. Similarly, KCDF was able to effectively wind down and concluded several projects. Here is a summary of our overall performance for the last year:

Urban Livelihoods & Economic Empowerment



8,260

Beneficiaries (**1650** Households)
29 CSO Partners

Read More on pages 13 - 14

Food Security, Environment & Climate Change Adaptation



9,878

Beneficiaries (**2,600** Households)
10 CSO Partners
6 Primary Schools

Read More on pages 16 - 17

Girl Child Empowerment Programme



537

Young Women & Girls
27 Young Men
37 Tertiary Institutions (Universities & Middle Level Colleges)
450 Kenyan and International Mentors
27 Private Sector Partners
14,592 Giveback Days

Read More on page 19

Total Grants to Community Initiatives
Kshs.

97,797,004

Total Capacity Building & Institutions Strengthening Support
Kshs.

122,732,932

Total Programme Investment

Kshs.

254,659,922

Education & Scholarships



137

High School Scholarship
Beneficiaries
72 Girls
65 Boys
33 CSO Partners

Read More on page 21

Local Resources Mobilization



6,090

Beneficiaries (**1214** Households)
9 CSO Partners
12 Community Initiatives

Read More on pages 23 - 24

Local Capacity Development



7,585

Beneficiaries (**1517** Households)
21 CSO Partners

Read More on pages 26 - 27

In the coming year, we shall be aligning our work with the new strategic plan for 2014-2018. In this strategic plan, our work is divided into two thematic areas: Education, Youth & Children and Livelihoods, Environment & Climate Change Adaptation. This re-definition of our thematic areas is intended to enhance our strategies and help KCDF continue to innovate programmes that respond to community needs in a wholesome way.

Similarly, greater efforts will go towards strengthening our Policy, Research & Advocacy interventions as well as our Monitoring, Evaluation, Reporting & Learning work. To

realize the new strategy and targets therein, more efforts shall be directed towards enhancing partnerships with private sector, individuals and government. The foundation wishes to leverage resources from all spheres of development in a joint strategy to realize greater impact on communities while promoting sustainable development approaches.

The foundation aims to grow her annual programme support budget from US\$3.5 million to US\$ 4.5 Million through fundraising and resource leverage.



• PEACE BUILD
RESOLUTION

• ALTERNATIVE DISPUTE RESOLUTION

SUPPORTED BY: KENYA COMMUNITY DEVELOPMENT

189351
KEBS
KEMERSON

d.light
Solar Lantern 520

d.light
Solar Lantern 520

Urban Livelihoods and Economic Development



The Urban Livelihoods Programme seeks to work with local civil society organizations working with communities in the urban informal settlements in Nairobi through capacity development and grantmaking.

The grants target interventions that benefit vulnerable people living in Kibera and other informal settlements in Nairobi. These initiatives enable urban poor to carry forth their developmental agenda of addressing poverty reduction, enhancing access to essential services such as sanitation, water and green energy, as well strengthening their voices through deepening of people involvement in civic dialogue and peace building among different ethnic communities living side by side in these informal settlements.

The programme, courtesy of a funding partnership with Comic Relief, United Kingdom, targets marginalized and vulnerable groups including girls, women, youth, people living with disability, caregivers, orphans and vulnerable children.

The year 2012-2013 saw an increase in KCDF's outreach to more local civic organizations implementing projects within the informal settlements in Nairobi. The urban livelihoods programme aligned its activities to this objective and actively facilitated development of capacity building plans among its partners. Capacity building support was accorded to the 29 partners through a mix of strategies including learning forums exposure visits, cross grantee mentorship and training based on the organizations individual capacity needs. Some of the interventions supported in the programme included

Interventions supported

Through existing and new partnerships, the Urban Livelihoods partners were facilitated to implement projects that reached out to the target through a mix of strategies. On civic engagement,

four organizations¹ mobilized, sensitized and educated the community on the devolved resources. They also encouraged the community to engage with and hold their leaders accountable as well as rallying youth and women to actively participate in the elections. The organizations liaised with the relevant District Peace Committees thus setting up systems for peace monitoring within the informal settlements. The Urban Livelihoods Partners² engaged in promoting environmental management specifically organizations focused on capacity building the local community in Kibera to embrace clean and safe sources of lighting. This was done through the promotion of access to solar lighting systems through an affordable credit model as well as the promotion of cooking fuel with minimal accumulation of charcoal dust.

The Urban Livelihood partners³ mobilized and facilitated skills development for 541 youth drawn from Kibera, Kawangware, Mathare, Mukuru and Korogocho informal settlements. The youth were equipped with skills in entrepreneurship, employability, leadership, the creative and performing arts. Business startup kits were availed to the youth through the revolving fund model.

On health management, the Kenya Association for the Welfare of People with Epilepsy was facilitated to develop of a mobile phone platform to support e-awareness on the management of epilepsy among healthworkers, patients and caregivers. Atleast 912 people were reached with information on management of epilepsy and are currently involved either as caregivers, patients or ambassadors.

¹ Kenya Youth Foundation, Animators for development, Network for Youth Empowerment Kenya, Institute for Development and Welfare Services

² Riziki Kenya and Mwingu CBO

³ Utena Youth Organization, Youth development Forum, YADEN, Kibera Girls Soccer Academy, DYWO, SAPTA, KITO CBO and Children of Kibera Foundation Kenya

On women empowerment, the Urban Livelihoods partners⁴ supported 552 women to set up sustainable income generating activities. This was done by equipping them with skills to plan and manage their businesses. The women were also encouraged to embrace a savings culture which enabled them to mobilize collateral towards accessing credit from community based revolving funds and micro finance providers. Given the myriad social challenges facing women, systems for psychosocial support were put in place through the establishment of lean on circles and group counseling.

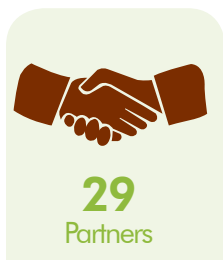
Three organizations⁵ facilitated persons with disabilities to know and claim their rights. This was done through sensitization on the provisions within the constitution of Kenya through the Disability Act under the Bill of Rights. The organizations also lobbied duty bearers to effect the implementation of the relevant

laws that promote access to basic services for persons living with disabilities in the health, transport and housing sectors.

In a bid to ensure children have access to a clean and healthy environment for study and play, two organizations⁶ in Kibera embarked on infrastructural and capacity building initiatives. The two initiatives sought to improve the learning environment and educate the children on hygienic practices respectively.

Going Forward

During the coming year (2013-2014), the programme shall focus on strengthening and building credible local institutions with capacity to achieve even greater results in efforts towards sustainable development of communities living in the informal settlements in Nairobi.



⁴ Rehma to Allah, LOCAP, KICOSHEP, KEFAT, HOYWIK, KWFP, HAKI CBO, Life Bloom International

⁵ Deaf Ability Initiative, Sign Language Resource Centre and Action Network for the Disabled

⁶ Bethel Outreach Children's Centre and Kibera Slum Education Programme



Food Security Programme



The Food Security Programme dubbed USTAWI continued promoting a comprehensive approach to long term solutions for sustainable agriculture, climate change adaptation and food insecurity in Kenya. The programme embarked on a multi-pronged approach during the reporting period to ensure that communities, especially small holder farmers, had an enhanced resilience to drought & famine while promoting an integrated model that links food security to sustainable access to water for drip irrigation, climate adaptation & community resilience enhancing initiatives, value addition & storage, strengthening capacities of communities and linking them to service and extension providers. KCDF also focused on promoting environmental conservation and sustainable use of natural resources.



9878

Direct beneficiaries



10 Partners

KShs

10 Million



6 School

Irrigation Based Agriculture

KCDF partnered with Noomayianat Community Development Organization (NCDO) in Oloitoktok to scale up a drip irrigation project which aimed at boosting food production and reducing famine risks for hundreds of people in the semi-arid area of Kimana location. The project focused on moving the community from the more water intensive furrow irrigation to drip irrigation. With the grant award, NCDO supported three women groups with a total membership of 117 women in Kimana Location with drip irrigation kits. The initiative has since benefitted 799 households as direct beneficiaries and 5,000 indirect beneficiaries in Kimana and the neighboring locations. KCDF partnered with Langobaya Community Development Programme (LACODEP) to address climatic challenges experienced by Hongera Bwagalau irrigation farmers in Malindi. Frequent changes of River Galana course brought about by siltation led to clogging of irrigation pipes with mud which made it difficult for farmers to directly tap water from the river. LACODEP was supported to sink a borehole which is currently providing clean and silt-free water to 200 horticulture farmers in the area. The beneficiary farmers have also realized bumper harvests as well as improved income from sale of produce.

In the reporting period, KCDF awarded a grant to Nomadic Women for Sustainable Development (NOWSUD) to initiate a food security project in Isiolo County. The project aimed at promoting the adoption of drip irrigation technology, encourage poultry keeping among the pastoralist community and raising of tree seedlings for environmental and riverine conservation. Through the project, Isiolo School for the Deaf, with a population of 60 students, was supported with a water harvesting system which has enabled the school to cultivate crops in their school farm hence supplementing their existing school feeding programme. The project has also benefited a women's group with a membership of 50 members, with a drip irrigation kit to enhance their vegetable production.

KCDF provided a grant to ILLARAMATAK Le Mpusel, a women group in Loitoktok, Kajiado County to implement a project focused on enhancing food security and environmental conservation through drip irrigation farming. The project targeted four women groups as well as raising of tree nurseries in 30 primary schools in the region.

Access to Certified & Improved Seed Varieties

With grant support from KCDF, Participatory Approaches for Integral Development Organization (PAIDO) initiated a seed security project designed to enhance food security through sustainable access to diversified and quality dry-land crop seeds. Through the project, PAIDO processes the certified seeds and make them accessible to poor farmers through a seeds loan scheme. This has ensured that the local farmers in the region acquire certified seeds at an affordable price through-out the planting seasons. The project targets to supply good quality seed to approximately 1,500 farmer households per season with some 297 farmers having already received seeds in the first round of distribution. The project is also providing income to 35 youth members drawn from the organisation.

Food and Nutritional Security Initiatives

In the reporting period, KCDF supported The Samburu Women Empowerment Integrated Project (SWEIP) to implement a cohesive project that sought to enhance food and nutrition security by supporting orphans and vulnerable children (OVCs) with dairy goats and drip irrigation kits in Kirisia Division, Samburu. The project targeted to support 100 OVC households, with an average of 7 children per household. More than 50 OVC households have been supported with a two-acre drip irrigation kit for food production while 25 OVC households have been supported with one dairy goat each for nutritional support.

In the reporting period, KCDF partnered with Eastern Community Development Programme (ECDP) to implement food security and livelihood project with local farmers in Kathiani and Machakos Central. The integrated project included the training of six local farmer groups in local poultry production, gunny bag production, simple drip kit irrigation and on-farm water harvesting. Four local poultry units were set up with approximately 800 birds.

KCDF supported Il Ngwesi Group Ranch with a grant to initiate a food and nutritional security programme focused on improving the source of income for women as well as enhance efficient use of water for food production in Laikipia County. The grant award supported the establishment of two greenhouses for two women groups in Ethi and Lokusero with a cumulative membership of 100 women.

KCDF gave a grant to Pastoralist Community Initiative Development Assistance (PACIDA) to implement a project aimed at enhancing food security through greenhouse food production technologies in the arid region of Shurr, Marsabit County. The project has benefitted 30 households with a steady supply of food for domestic consumption. The project has also provided income generation for 35 youth members drawn from Shur Environmental Empowering Youth group from the sale of the surplus produce.

KCDF partnered with Idio Farmers to implement a food security and economic empowerment project targeting 60 out of school youth and young single mothers in Bomeni Ward, Taveta Constituency. In the reporting period, 60 farmers benefited from 6,000 tissue culture bananas. Training on good agronomic skills and marketing were also conducted. Through the project, the beneficiaries have been able to form and register a cooperative that will be instrumental in marketing their produce.

The above initiatives were supported through financial support from Wilde Ganzen, a Dutch Foundation and Commercial Bank of Africa.

KCDF, through the Know and Grow Education Programme initiated by Safaricom Foundation, continued to set up green houses in schools to encourage participating schools produce their own food to compliment the Government sponsored school feeding programme. The programme also seeks to promote provision of life skills to school pupils as well as the neighboring communities. In the year in review, six schools benefitted from the programme taking the total number of schools in the programme to 10 schools so far with a cumulative student population of 3,223.

Going Forward

In the coming year, KCDF will strengthen focus on research, policy influencing and environmental conservation interventions, which are other key components of the USTAWI initiative. Greater networking and exchange of learning with other key actors and stakeholders in the agriculture sector will be key to enhancing the impact of KCDF's Food Security Initiative, USTAWI.



IRENE OMIERO
- GGBC

CONSOLATA
NDUNGWA
- GGBC

PAULINE OCKO
- GGBC

Girl Child Development & Empowerment Programme



The Girl Child Development and Empowerment Programme aims at addressing the challenges encountered by the girl child in Kenya in a wholesome way by giving the girl child an equal chance to compete and lead a fulfilled life.



537
Girls Supported



27
Young Men



14,592
days in give back time

For over eight years now, KCDF has provided education scholarships to needy but bright girls, who would otherwise not go to school through the Girl Child Programme. These girls come from disadvantaged families and face numerous hardships including gender violence, early (and forced) marriages, female genital mutilation, lack of mentorship and many other disempowering situations.

KCDF has been implementing a process called The Global Give Circle which aims at making the girl and selected boys to become empowered, selfless and capable citizens of Kenya. The Global Give Back Circle is a Clinton Global Initiative (CGI) Commitment that has blossomed into the largest gender-based tertiary education and mentoring program for at-risk girls in Kenya through a Give Back Process propelled by KCDF, USAID Kenya, a compassionate private sector, a devoted local community, mentors and the girls themselves.

The 'Circle' is designed for sustainability as beneficiaries learn how to become benefactors through the registration of annual give back commitments that guide them on how to drive positive change and create measurable impact in their communities. Six years of commitment-making has embedded a powerful give back ethos among the 564 girls, now young women, in the 'Circle.' These scholars have to date given at least 14,592 days in give back time or 350,208 man hours for 304 beneficiaries. In the coming year, we expect the number of the beneficiaries giving back to their society through their time and skills to be higher as the new girls recruited in the last year settle down into the process.

KCDF was also able to match 70% of the beneficiaries (450 mentors recruited) in the program with successful women and men across the globe. Mentorship continues to be an important component of the process and KCDF has embarked on a recruitment drive especially within Kenya to have more mentors to walk and guide the young women.

Going Forward

As the number of the beneficiaries continues to increase, proper and intimate management of the needs of the girls maybe hindered. This is coupled by the tendency of the girls to delink themselves from their communities once they commence their Tertiary/University Education after moving from their domicile localities. To closely monitor and ensure that girls are indeed benefitting from the ideals of the programme, KCDF will scale up and closely work the various organisations that the beneficiaries were recruited through to ensure they remain supportive of the beneficiaries and ensure that they do not lose the community connection.

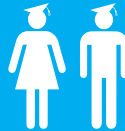
Through The GGBC process, KCDF started, on a pilot basis, a gender based initiative referred to as the Window of Opportunity (WOO) which targets disadvantaged male students. Since the GGBC initiative is a gender based program that focuses on the Girl Child, there has been a limitation in increasing the number of male students. In order to address this challenge KCDF is focusing on developing a program that will seek to source funding to support the boys under a different program that is tailored for the increasing marginalized boy child in the coming year.



Education & Education Scholarships Programme



33 Intermediary Organisations



137 Scholarships
72 Girls
65 Boys

KShs
4.25 Million

KCDF has been administering an education scholarships grants for the last 10 years to needy and deserving children from extremely disadvantaged backgrounds to access education nationally. The scholarship grants are awarded to children who have performed well in their Kenya Certificate of Primary Education and are unable to transit to secondary.

KCDF partnered with 33 intermediary organisations across Kenya to disburse the grants in the reporting period. The selected organizations seek to leverage the KCDF grant by augmenting the grant with funding from other sources thus enabling the students to receive full scholarships. The groups also monitor the well-being of the beneficiaries both in-school and out of school.

In the year under review, KCDF was able to scale up the scholarship program despite a challenging environment in the education sector. A total of 137 students (83 Female and 54 Male) were supported with partial scholarships amounting to Kshs. 4,250,000. This is a marked increase compared to the previous year's 115 students with a grant amount of Kshs 2.2 Million.

Access to secondary education has increasingly been hampered due to high school fees especially for national schools marginalizing the deserving students who have excelled in their primary level education. The challenge is further compounded by the maximum limit of scholarship amount provided to the students of Kshs.25, 000.

Under the year in review, KCDF bolstered its fundraising efforts by bringing on board new partners as well as encouraging the existing ones to scale their support. Through this intervention, KCDF increased the maximum scholarship award from Kshs.12,000 up to a maximum of Kshs 45,000 to address the significant increase of school fees. Although this was a major achievement, the scholarship award is still below the existing cost for joining secondary schools at national and provincial level schools.

KCDF continued with its long term partnership with Chandaria Foundation, now in its seventh year with secondary school level scholarships. The fund was able to support 100 students (37 Male and 63 Female) with partial scholarships of Kshs.25, 000. The total amount granted to KCDF in the reporting period was Kshs. 2,816,665. Chandaria Foundation has to date disbursed to KCDF a total of Kshs. 15,581,665 over the seven year partnership period 245 students. The program has successfully transitioned 180 students through secondary school education.

In the reporting year, Mr. Davinder Singh (Devgun) – a local philanthropist scaled his support to the programme by committing to support 10 students on annual basis for the next four years with a grant amount of Kshs. 500,000 per year. Hotpoint Appliances, a leading supplier of industrial and domestic appliances, came on board and supported the programme with a grant amount of Kshs. 2 Million for a period of four years. The fund was able to support 10 beneficiaries with scholarship in the reporting period.

Hope Trust Fund, a KCDF fund builder transferred its grantmaking functions to KCDF. Effective 2012, KCDF administers the Kshs. 750,000 annual scholarship fund to 10 needy students. KCDF also continued to receive funding from various private sector partners under the Global Give Back Process.

Going Forward

Going forward, KCDF will continue engaging at the policy level to ensure the cost of accessing education is affordable to all students and particularly the ones who have excelled but are unable to join national schools due to the punitive school fees. KCDF will also reinforce its resource mobilization function to get more partners on-board to provide scholarships for the ever increasing education demands.

Another challenge that was witnessed in the reporting period was the national teachers strike that affected education.



Building Capacity for Local Community Resources Mobilization (Pamoja4Change)



9 Partners

KShs

11 Million Raised Locally



6,090

Beneficiaries

This is an innovative initiative that offers incentives for successful local fundraising efforts by Kenyan grassroots civic organizations. It seeks to promote local people driven change through partnerships with local people, enterprises and government, where resources are leveraged and directed through the leadership of the local community organizations, towards priority development issues such as classrooms, health facilities, water & sanitation facilities, lighting, among other common services that enhance the status of the community in general.

Thus, the aim of this initiative is to promote local philanthropy, as well as demonstrate that the future alternative source of funding lies in the hands of the same members of the community that are affected by the changes the communities are working to improve.

The programme, courtesy of a unique partnership with Wilde Ganzen Foundation, the Netherlands, is administered through an incentives based competitive grants scheme for community groups who identify unique projects for which they would like to leverage their own locally raised resources with a matching of 1:1 from KCDF. Their local fundraising efforts are brought to KCDF and then given back to the local community organization with the KCDF match to implement their project over periods of between six to 12 months.

Under the year in review, KCDF partnered with nine (9) organisations in successfully implementing a myriad of community driven development projects spread across the country with cumulative grants of Kshs. 22,206,422 which includes funds raised locally:

Strengthening Education Facilities

In Narok County, KCDF supported Nkoilale Community Development Organization (NCDO) to construct six classrooms in

three feeder schools to bridge the long distance that the children had to cover as well as mitigate the threat of human-wildlife conflict. The organization also set-up a water harvesting system in each of the three schools to improve the general hygiene of the pupils. Approximately 180 children are benefitting from the classrooms and it is hoped there will be a significant increase in enrolment to the main schools in the area. The predominantly maasai group was able to fundraise half of their commitment amount of Kshs. 2 Million by giving their contributions both in monetary terms as well as donating at least one head of cattle which would later be auctioned and the money used to match the grant.

In Turkana County, KCDF worked with Alemun Pastoralists Empowerment Initiative (APEI) to construct a model 'Ng'keyokok' (Herders) Early Childhood Development Centre for 80 children aged between 1-8 years. The group was also able to install solar lighting to the classrooms to aid adult literacy programmes at the center by offering night classes. The community members were able to raise their match of Kshs. 731,070 through community contributions in cash as well as donation of land to construct the classrooms.

In Garissa County, KCDF partnered with Pearls of Hope Kenya Foundation (PHKF) to construct two classrooms and a toilet in an Early Childhood Development Centre to encourage enrollment and uptake of education in the pastoral community. There have been minimal investments in education; especially in the formative stages of children causing a negative impact in performance of the pupils in the latter stages of their education. The group also sunk a shallow well to provide clean water to the school and the neighboring community. The group was able to rally community members who hail from the county but are currently residing in Nairobi to a fundraising event where commitments and donations were made towards the initiative.

Strengthening Community Access to Health-care and Sanitation Services

KCDF partnered with Eco Ethics International in Mombasa County to set up two water harvesting systems in Kongowea and Maweni Primary schools to improve the sanitation of the over 1200 children in the two schools. The group reached out to community members through a door to door campaign as well engaging local companies (Civicon and Mitchel Cots) to come on board in raising half of the commitment amount of Kshs. 457,740.

In Siaya County, KCDF partnered with Participatory Research and Development Programme (PRDP) to improve the health and sanitation needs of 2000 school going children. PRDP constructed five pit latrines in two schools & three early childhood education centers as well installation of a water harvesting system in the schools and two health centers which has seen a decline in water borne diseases in the locality.

KCDF supported Rural Initiatives Development Programme (RIDEP) in Tharaka-Nithi County to construct a sewage disposal system consisting of 12 flush-in toilets and one septic tank with a capacity of 10,000 Liters at Marimanti Girls Secondary School. RIDEP was able to raise their required Kshs 897,100 to unlock the match from KCDF by devising local actions to raise resources such as approaching parents and teachers of the students in the school, contributions from Tharaka-Nithi Constituency Development Fund and contributions from local churches. With construction of the toilets, it's expected the pupils' hygiene will improve which has inverse relationship to their academic work.

Promoting Access to Green Energy

In Murang'a County, KCDF supported Boosting Young Entrepreneurs Community Based Organisation (BYE CBO) to implement a pilot bio-gas project targeting six rural families, two children homes and two schools. The project was aimed at moving the community from using firewood and kerosene energy, which is expensive and causes health complications to adopting a cleaner and more affordable energy source for both lighting and cooking. The group was able to adopt a number of fundraising strategies which included football matches, contributions from members and tea factories in the area and interest from a revolving fund from the targeted beneficiaries.

In Siaya County, Participatory Research and Development Programme (PRDP) was supported to implement a solar project to households who are not connected to the national electricity grid. Through the project, more than 20 households have

benefited from the project through a revolving fund scheme. There have been significant savings from the beneficiaries from purchase of kerosene. The organisation was able to raise resources for their match through community fundraising events, contributions from members and the targeted beneficiaries.

Promoting Local Reproductive Rights

KCDF supported Kenya Youth for Christ (KYFC) to implement a reproductive rights programme christened 'Worth the Wait'. The project, targeting 48 secondary schools spread in five counties, focused on reproductive rights and broader sexually-related issues experienced by students in schools. Through the project, approximately 1600 students have been equipped with knowledge and life skills on sexual and reproductive rights which has seen a decrease in early pregnancies and overall improvement of performance for the students. The group was able to marshal resources from its membership as well as well-wishers to raise their required match of Kshs. 1,261,400

Strengthening Child Protection & Security

KCDF supported Eagle Rise Christian Church in Makeni County to construct and furnish a girl's dormitory in a rescue center - Eagle Rise Girl's Rescue Centre. The need for the dormitory was brought about by an increasing number of under-age girls who are either forced into early marriages or child prostitution by their guardians due to the poverty levels in the area. The dormitory has the capacity to accommodate atleast 80 girls. The project also offers education and nutritional support to the girls living in the rescue center. The group was able to fundraise Kshs. 2,026,775 which was matched by KCDF through a one to one approach with well-wishers as well as use of their website to create awareness of the plight of the girls with an online giving platform for those who wanted to support the center.

Challenges and Way Forward

Majority of the Partners found it difficult to fundraise during the electioneering period given current laws that prohibit public fundraising just before and immediately after the election. There was also a the fear that the elections might not be peaceful hence making fundraising difficult. The partners however picked up their local actions with majority of them successfully raising their premium.

Match grants being a relatively new concept to most communities groups, some groups had difficulties getting buy-in from their stakeholders.

Having tried and tested this model of sustainable resource mobilization for community projects, KCDF has mainstreamed this approach to all its thematic interventions with varying percentages.



Strengthening of Local Civil Society Organizations (Capacity Building)

Enhancing community participation through the strengthening of capacity for civil society organizations



KShs
37.5 Million



The programme is geared towards strengthening of local organizations. The CSOs strengthening programme utilizes the concept of grants making embedded with capacity enhancing interventions. The fund enables KCDF to invest in strengthening operating systems and programmatic capacity of the partnering organizations. Focus is not so much on the initiatives they are implementing, but the capability to implement those projects effectively and efficiently. The funding is through a partnership with Comic Relief, United Kingdom and targets local organizations working with communities to address children, youth, community economic empowerment, civic society strengthening, policy dialogue & engagement as well as promoting networking, exchange & learning among CSOs.

Under the year in review, KCDF increased its partnership with local organizations in the programme from 16 to 21 as a result of an increased demand for organizational capacity skills to enable the community groups better respond to community needs at their level.

KCDF was able to facilitate training in entrepreneurship skills while providing business development services such as startup capital, mentoring, coaching and linkages to credit facilities from local microfinance institutions to 20 groups. As a result, over 6,585 people have an enhanced income stream accrued from a number of economic activities ranging from agribusinesses to waste-management related businesses among others. Over and above the increase in income and provision of employment opportunities, the economic projects undertaken have also contributed to food security among the supported groups.

KCDF partnered with Community Empowerment Initiative Network (CEIN), a community based organization in Kakamega County and Kituiuni Youth Rescue Organization (KYRO), by strengthening their revolving fund and growing it to a Savings and Credit Cooperative Society (SACCO) with a membership of more than 150 for each group. KYRO supported 150 caretakers of orphaned and vulnerable children (OVCs) in Makueni County with credit facilities enabling them to initiate and expand their businesses and thereby generating extra income to support the more than 500 OVCs under their care.

Cognizant that the reporting year was an election year, KCDF partnered with Ewasoang Community Based Organisation (CBO) and Grassroots Development Initiative Foundation Kenya (GRADIF-K) in implementing a women socio-political empowerment project in Narok and Laikipia Counties. Through its civic engagement programme, Ewasoang CBO was able to realize a marked increase in women political representation at the constituency and ward level with three women from its membership being elected to the county's assembly and one woman elected to the National Assembly. Four other women were also appointed to sit in the Constituency Development Fund Management Committee. The group further supported 14 women among its membership to legally acquire title deeds belonging to their late husbands, a key milestone in the predominantly patriarchal Maasai culture which does not recognize women as landowners. With ownership, control and access to their land, the women have since engaged in economic activities to support their welfare.



KCDF partnered with Grassroots Development Initiative Foundation Kenya (GRADIF-K) to undertake a rapid assessment to investigate the status of women representation and participation in leadership positions in Laikipia County in line with the gender provisions of the Constitution of Kenya. The rapid assessment report informed the training of 24 women leaders as well as conducting civic education and voter registration forums reaching over 300 community leaders on women engagement in leadership. As a result, two women were appointed as County Executive Members in the County Government of Laikipia.

In line with KCDF's strategic goal of working towards creating an enabling legal, regulatory and institutional framework for Civil Society Organizations (CSO's) operating in Kenya, KCDF took a lead role in a stakeholder consortium known as the CSO Reference Group. The consortium was instrumental in facilitating the formulation and passing of the Public Benefit Organizations Bill, 2012 as well as drafting its accompanying rules and regulations. The PBO Bill was finally assented to by the President and became an Act in 2013 through its operationalization is yet to take effect.

In its quest to support accountability and the highest standard of community development in Kenya, KCDF continued supporting Viwango (Swahili for standards) - an independent, standards setting and certification organisation for CSOs in Kenya,

with both financial support as well as encouraging its grantees to undertake the certification process. It's envisaged that most grantees will have an improved delivery systems to make their organisations more effective in addressing both their organizational capacity as well as enable them implement their initiative to the highest standards of practice and performance.

Challenges and Way Forward

The general election in March 2013 significantly interfered with implementation of projects by the partners as many community members were intensely engaged in civic education exercises as well as campaign drives.

The progressive rise in inflation rate in the country has resulted in increase in prices of basic commodities hence adversely affecting the partners' budget estimation.

KCDF will continue placing emphasis on operationalization of the Public Benefits Organisation Act as well as ensuring all its grantees are in conformity to the new regulatory framework. KCDF will also continue encouraging all its grantees and other like-minded civil society organisation to participate in the certification process instituted by Viwango to realize sustainability for both the organisations as well as their community interventions.

Policy, Research and Advocacy Programme



Strengthening and enhancing the culture of philanthropy and influencing the policy environment for organized giving in Kenya.

Under the year in review, KCDF through the Policy, Research and Advocacy Programme sought to deepen collaborations that would encourage research driven policy decision-making and practice while engaging policy makers and media to strengthen the civil society space. In the reporting period, KCDF was able to participate in the following policy initiatives:

The Tax Incentives for Philanthropy Initiative

KCDF has been involved in promoting an enabling and favorable space that promotes organized giving through appropriate policies anchored on a comprehensive legal framework. One sticking point; however on leveraging local resources over the years has been an unclear tax exemption regime which facilitates both organisations and individuals to benefit from tax exemptions hence encouraging sustained local giving.

To address this gap, KCDF facilitated convenings bringing together 30 Researchers, Media Practitioners and Advocacy organizations in an effort to bring to the fore challenges that continue to slow down the operationalization of tax exemption statutes under the existing law which explicitly touch on tax incentives available to the general public as well as the procedures of accessing these incentives.

Four convenings took place under the year in review with the deliberations from these meetings leading to the commissioning of a research which is being conducted in collaboration with Strathmore Law School.

The research seeks to provide insights on the perceptions, attitudes and approaches applied to philanthropy in Kenya. Furthermore, the research seeks to establish how the existing philanthropy tax policies, their tax incentives provisions and their operationalization under the law are working in practice. It is hoped that the findings from the research will provide an

understanding of the interventions needed to fully unlock the potential of philanthropy in the region. Thereafter, the policy interventions and advocacy strategies will be developed based on the evidence derived from the research.

The Public Benefits Organizations (PBO) Act and The Statute Law Bill

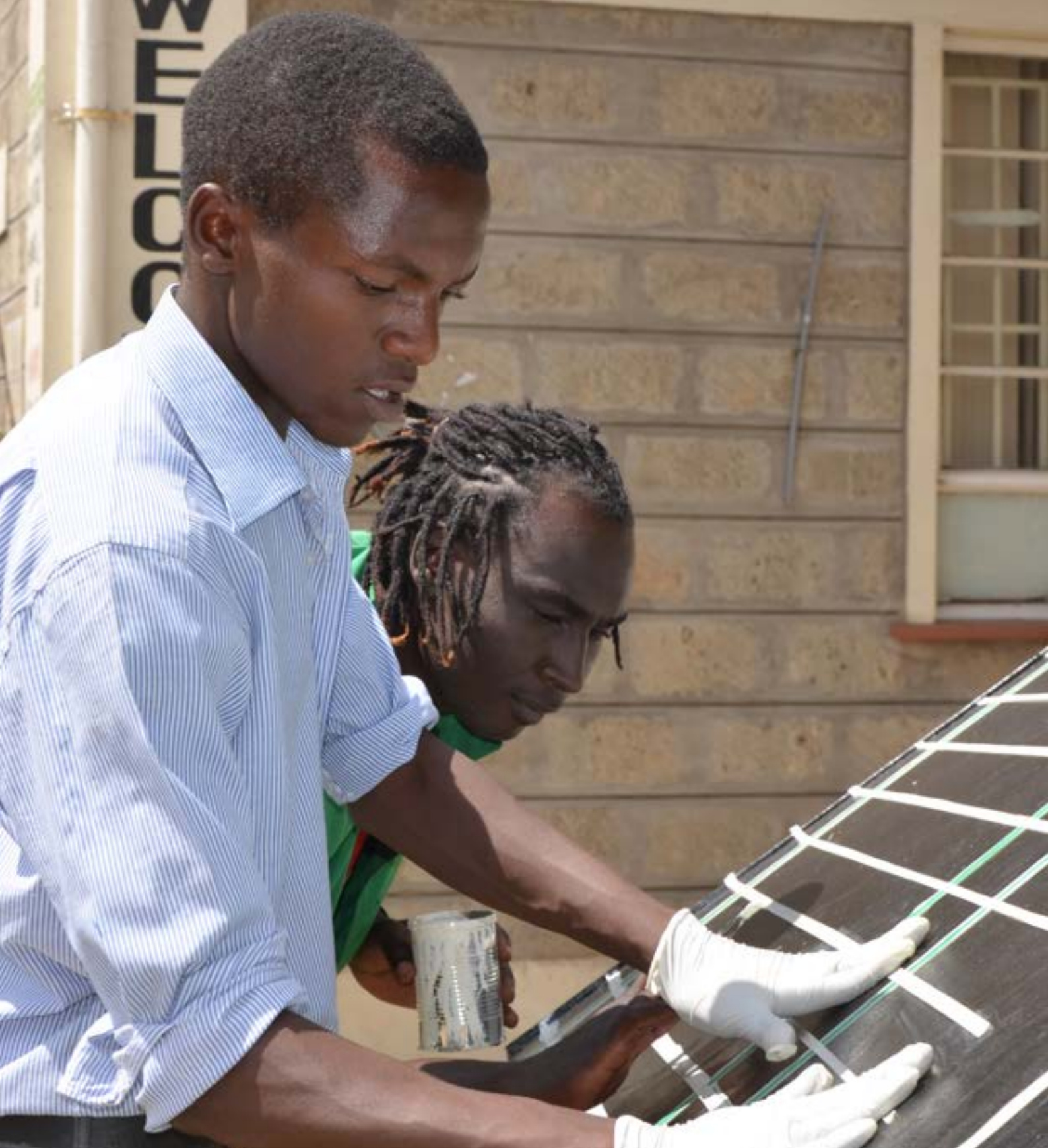
KCDF continued participating as a founding member in the CSO Reference Group, the organization behind the drafting and pushing for the enactment of the PBO Act. In the implementation of the PBO Act, KCDF is partly facilitating the development of the Rules and Regulations which are currently being drafted to operationalize the PBO Act which was assented to in January 2013.

The Public Benefits Organisations (PBO) Act is the new Act that seeks to establish a regulatory and administrative framework within which Public Benefits Organizations can conduct their affairs. The Act provides mechanisms for ensuring that the organizations within the sector are transparent and accountable, this is of interest to KCDF because where the sector is seen to be accountable and transparent, local philanthropy is bound to thrive. KCDF is working with its grantees to ensure that they are compliant to the new regulatory dispensation.

Challenges and Way Forward:

One of the challenges faced in respect to the policy thematic area was the delay in commencement of the PBO Act. Despite the Bill being assented to in 2013, the Cabinet Secretary in charge of Devolution and Planning has yet to publish the commencement date. KCDF under the CSO reference group will continue agitating for the commencement of the Act in the coming year.





Youth Development Programme



Empowering young people gain the ability, authority and agency to make decisions and implement change in their own lives and the lives of other people within their communities.

KCDF continued partnering with youth-led and youth serving organisations across the country in creating and improving opportunities for young people in the areas of employment, life skills and their overall empowerment.

Under the year in review, KCDF with financial assistance of Kshs. 6.1 Million from Barclays Bank of Kenya partnered with eight youth led organizations to implement interventions that focused on creating an enabling environment for youth through life skills development, financial literacy and entrepreneurship skills thus creating new opportunities for rural and urban youth. The Bank provided trainings on the above skills to the youth through their extensive branch network.

Through the partnerships, over 372 young people benefited from the trainings and went ahead to initiate 75 income generating activities in their respective localities ranging from agribusiness, event management, waste management and providing solutions on renewable energy among other enterprises. Some of the interventions supported include:

In the reporting period, KCDF partnered with Ushirikiano Self Help Group in a project aimed at scaling-up the group's rocket stove production to meet the rising demand of the cookers in their locality as well as promote environmental conservation. The group is at an advanced stage of forming a rocket stove builders sacco to provide value addition services as well as small scale credit for investment to boost their income generating activities.

KCDF gave a grant to Tharaka Nithi County Youth Network to implement a youth empowerment project that sought to provide its members with enterprenuriaral skills, financial education as

well as the establishment of a revolving fund to support the youth with business capital after the trainings.

KCDF awarded a grant to Jiamini Self Help Group and Let's Change Our Community Youth Group (LECOC) to facilitate a youth empowerment project in Kabarnet, Baringo County and Homabay County respectively and. The project sought to impart modern farming techniques to the youth group through establishment of demonstration plots consisting of low cost drip irrigation kits for horticultural farming in as a means of exposing the youth to alternative livelihood ventures.

KCDF partnered with Regional Institute for Social Enterprise (RISE) to conduct entrepreneurship training as well as offer business support to youth groups in Migwani location, Kitui County. The objective of the trainings conducted was to improve the skills of the youth in producing aloe- vera soap as well as provide business mentorship to the youth.



JOIN US IN

Golfing FOR GOOD

COMMUNITY OPEN
Friday October 10th, 2014





Community Open 2013 Corporate Sponsors





SECTION
03

**The
Numbers**

Statement of financial position at 30th September 2013

FUNDS BALANCES		Note	2013 KShs.	2012 KShs.
General fund			16,129,853	(4,815,588)
Revaluation surplus			27,532,646	-
Endowment funds			617,444,943	542,046,855
			661,107,442	537,231,267
Non-current assets				
Property, plant and equipment	10		81,792,546	46,820,172
Intangible assets	11		-	40,001
Endowment Trust funds	12		617,444,943	542,046,855
			699,237,489	588,907,028
Current assets				
Grants receivables	13		25,267,833	20,128,770
Receivables and deposits	14		15,700,327	10,488,865
Fixed deposits	15		98,385,516	19,833,709
Cash at bank and in hand	15		4,653,461	14,581,403
			144,007,137	65,032,747
Current liabilities				
Unexpended grants payables	13		52,518,262	52,261,219
Bank overdraft	15		10,684,620	-
Payables and accruals	16		10,204,787	8,027,374
Deferred income	17		2,200,000	4,311,814
Deferred grant income	18		61,038,448	-
Sub-grant payable	19		45,491,067	52,108,101
			182,137,184	116,708,508
Net current assets / (liabilities)			(38,130,047)	(51,675,761)
			661,107,442	537,231,267

1. Significant Accounting Policies

The principal accounting policies adopted in the preparation of these financial statements are set out below. These policies have been consistently applied to all years presented, unless otherwise stated.

1.1 General Information

Kenya Community Development Foundation is incorporated in Kenya under the Kenyan Companies Act as a company limited by guarantee, and is domiciled in Kenya. The address of its registered office and principal place of business is 4th Floor, Morningside Office Park - Off Ngong Road, P.O. Box 10501 -00100 Nairobi, Kenya. The principal activities of the foundation is to build permanent resources for development work from a diverse range of Kenyan and International sources.

1.2 Basis of preparation and summary of significant accounting policies

These financial statements have been prepared on a going concern basis in compliance with the International Financial Reporting Standard for Small and Medium-sized Entities (IFRS for SMEs) issued by the International Accounting Standards Board. The measurement basis used is the historical cost basis except where otherwise stated in the accounting policies below.

They are presented in Kenya Shillings (Shs):

a) Revenue and expenditure recognition

Income from grants represents the fair value of consideration received or receivable and is recognised when it is probable that future economic benefit will flow to the foundation and the amount can be measured reliably. Expenditure is accounted for on an accrual basis.

b) Translation of foreign currencies

All transactions in foreign currencies are initially recorded in Kenya Shillings, using the spot rate at the date of the transaction. Foreign currency monetary items at the balance sheet date are translated using the closing rate. All exchange differences arising on settlement or translation are recognised in profit or loss.

c) Financial instruments

Financial assets:

Other receivables are initially at the transaction price. At the end of each reporting period, the carrying amounts of other receivables are reviewed to determine whether there is any objective evidence that the amounts are not recoverable. If so, an impairment loss is recognised immediately in profit or loss.

Investments in quoted shares, government securities, offshore investments and corporate bonds are initially recognised at the transaction price and subsequently measured at fair value with changes in fair value being recognised in statement of changes in net assets. Fair value is determined using the quoted bid price at the reporting date.

Demand and term deposits are initially recognised at the transaction price and subsequently measured at amortised cost using the effective interest method.

Amortised cost is the amount at which the financial asset or liability is measured on initial recognition minus principal repayments, plus or minus the cumulative amortisation using the effective interest method of any difference between the initial amount and the maturity amount, and minus any reduction for impairment or uncollectibility. Fair value is the amount for which an asset can be exchanged, or a liability settled, between knowledgeable willing parties in an arm's length transaction.

Impairment loss is the amount by which the carrying amount of an asset exceeds its recoverable amount,

which is the present value of the expected future cash flows, discounted using the effective interest rate.

Financial liabilities

All financial liabilities are recognised initially at fair value of the consideration given plus the transaction cost with the exception of financial liabilities carried at fair value through profit or loss, which are initially recognised at fair value and the transaction costs are expensed in the profit and loss account.

Subsequently, all financial liabilities are carried at amortised cost using the effective interest method except for financial liabilities through profit or loss which are carried at fair value.

All financial liabilities are classified as non-current except financial liabilities at fair value through profit or loss, those expected to be settled in the company's normal operating cycle, those payable or expected to be paid within 12 months of the balance sheet date and those which the company does not have an unconditional right to defer settlement for at least 12 months after the balance sheet date.

Derecognition

Financial assets are derecognised when the right to receive cashflows from the investments has expired or the trust has transferred substantially all the risks and rewards of ownership.

Financial liabilities are derecognised only when the obligation specified in the contract is discharged or cancelled or expires.

Offsetting

Financial assets and liabilities are offset and the net amount reported in the balance sheet only when there is a legally enforceable right to set off the recognised amounts and there is an intention to settle on a net basis, or realise the asset and settle the liability simultaneously.

d) Property, plant and equipment

Items of property, plant and equipment are measured at cost less accumulated depreciation and any accumulated impairment losses.

Depreciation is charged so as to allocate the cost of assets less their residual values over their estimated useful life, using the straight-line method. The following annual rates are used for the depreciation of property, plant and equipment:

	Rate
Operating lease rentals	50 years
Buildings	2.0%
Office equipment	12.5%
Furniture and fittings	12.5%
Motor vehicles	25.0%
Computers	30.0%

If there is an indication that there has been a significant change in depreciation rate, useful life or residual value of an asset, the depreciation of that asset is revised prospectively to reflect the new expectations. On disposal, the difference between the net disposal proceeds and the carrying amount of the item sold is recognised in profit or loss.

e) Intangible assets-computer software costs

Software licence costs that are not an integral part of the related hardware are initially recognised at cost, and subsequently carried at cost less accumulated amortisation and accumulated impairment losses. Costs that are directly attributable to the production of identifiable computer software products controlled by the organisation are recognised as intangible assets. Amortisation is calculated using the straight line method to write down the cost of each licence or item of software to its residual value over its estimated useful life using an annual rate of 33.33%.

f) Post-employment benefit obligations

The organisation and the employees contribute to the National Social Security Fund (NSSF), a national defined contribution scheme. Contributions are determined by local statute and the organisation's contributions are charged to the income statement in the year to which they relate.

g) Deferred income

Grants received for the purchase of property, plant and equipments are taken to deferred income and transferred to the income statement over the expected lives of the respective assets.

h) Taxation

KCDF is exempt from income tax under the First Schedule, paragraph 10 of the Income Tax Act. The organisation is exempted under the Privileges and Immunity Act Chapter 179, which was gazetted on 7th October 2011.

i) Cash and cash equivalents

Cash and cash equivalents include cash in hand and demand and term deposits, with maturities of three months or less from the date of acquisition, that are readily convertible to known amounts of cash and which are subject to an insignificant risk of changes in value.

j) Transition to the IFRS for SMEs

KCDF's financial statements for the year ended 30th September 2013 are its first annual financial statements prepared in accordance with the IFRS for SMEs. The financial statements for the prior year were prepared in accordance with full IFRS and there are no changes in accounting policy on transition, which would result in restatement of prior year figures.

1.3 Judgement and key sources of estimation uncertainty

No significant judgements have had to be made by the directors in preparing these financial statements.





Grantees Profiles

Economic Development Programme

The Urban Livelihoods Programme seeks to support local civil society organizations through capacity development and grant-making to vulnerable people living in Kibera and other informal settlements in Nairobi carry forth their developmental agenda with the primary aim of alleviating poverty, strengthening their voice and improving their general health.

The programme, courtesy of Comic Relief's funding, targets marginalized and vulnerable groups including girls, women, youth, people living with disability, caregivers, orphans and vulnerable children.

Some of the partners supported under the year in review included

1. Riziki Kenya

Riziki Kenya exists to transform lives through providing an enabling environment for holistic child development and empowering the community for self-reliance. The grant sought to enhance access to safe, clean and affordable source of light to the rural poor in Transmara with specific focus on homes with school going children.

Grant Amount
Kshs 1,415,700

2. Tears Group Kenya

Is a local NGO that evolved from a church based drama and theatre group in 2002. They have since grown and are now reknown for their social change community theatre focusing on health, youth, behaviour change, governance and sexuality. The partnership with KCDF sought to develop experimental learning curriculum to help formalize the existing training modules to enhance a more integrated model for TEARS music training department, fashion designing & textile, film & theatre, computer graphics and design and application of entrepreneurship.

Grant Amount
Kshs 2,110,240

3. Great Lakes University Of Kisumu (Gluk)

GLUK is a non-profit community based training, research and development institution known for its Community College Model (CCM) that offers raining, mentorship for community members on enterprise development and other courses geared to address the gaps in livelihoods, unemployment and poor health indicators. The grant awarded was aimed at facilitating promotion of use of water hyacinth to produce biogas and manure amongst communities of women and youth who operate restaurants and horticultural farms around the beaches of Kisumu.

Grant Amount
Kshs 1,880,000

4. Nyandarua Central Youth Empowerment Initiative

Nyandarua Central Youth Empowerment Initiative is a community based organization based in Nyandarua County with a focus to empower youth in Nyandarua through provision of skills that help the youth gain access to gainful self employment and income generation. The funded project sought to scale up a rabbit and poultry rearing project and introduce value chain addition to ensure young people make meaningful income from their agri related enterprises.

Grant Amount

Kshs 1,898,889

5. Daisy's Eye Cancer Fund

DECF was registered as a local NGO in 2007 and constitutes the implementation arm of the DECF offices in the UK and Canada with the vision to bring the promise of life and sight to every child with retinoblastoma a type of eye cancer. The KCDF grant will support DECF in their organizational development by strengthening the design of sustainable programmes, enhancement of their visibility for improved resource mobilization, impact documentation, development of strategic plan and strengthening and expansion of the current E-cancer registry in the 8 major public hospitals.

Grant Amount

Kshs 3,895,029

6. Youth Initiatives Kenya

The vibrant youth led and managed organization envisions a "a society in which the youth are able to facilitate their own development" and works to achieve this through enhancing skills ,knowledge and opportunities for youth engaging in lobbying and advocacy on issues affecting youth and mobilizing resources for the target groups.

Youth Initiatives Kenya partnered with KCDF to strengthen systems, structures and operational processes of 10 youth groups engaged in various income generating activities ranging from garbage collection, sanitation blocks, car wash enterprises,cyber cafes and water vending.

Grant Amount

Kshs 1,301,095

7. Blind and Low Vision Network Kenya.

Blind and low Vision Network (BLINK) was registered as an NGO in 2003 with the sole purpose of advancing the welfare of visually impaired persons and prevents the occurrence of total blindness in Machakos County. The partnership with KCDF entailed an economic empowerment project through skills transfer on rabbit rearing, dairy goat farming, cake baking and awareness creation on the rights of people with disabilities.

Grant Amount

Kshs 1,746,843

8. Ki-Tuiuni Rescue Youth Group

Kituiuni Rescue Youth Group is the brain child of youth from Kituiuni Village, Kithangathini Sub-location who came together in 2006 and registered the organization with the primary goal of mobilizing local youth to participate more pro-actively in the socio-economic development of the locality.

KCDF partnership with the group aimed at targeting 100 OVC households and caregivers with the low interest loans to run household income generating activities to meet the basic needs of children under their care. Skills transfer on enterpreneurship,small business management and organizational strengthening of the organization were other key components in the funded project.

Grant Amount

Kshs 1,586,000

9. Grassroots Development Initiative Foundation

Registered in 2007, the GRADIF-K implements programs in Governance and Civic Education, Early Childhood Development (ECD) Programme and Child Protection, Basic Education for both Primary and Post Primary schools, Environmental Conservation and Natural Resource Management, Women and Girls Social economic Empowerment in Meru, Tharaka Nithi, Laikipia, Nyeri and Thika Counties.

KCDF's support was aimed at scaling up the organization's civic education work by specifically enhancing participation of women in political leadership, conducting social audit and empowering the community to actively work with the service providers for mutual benefit especially in the implementation of the new constitution and decision making in Laikipia County.

Grant Amount
Kshs **1,999,800**

10. St. Peters Community Network – Northern Kenya (SAPCONE)

Registered in March 2011, SAPCONE exists to promote community participation in realization of good governance, peaceful co-existence and economically viable society that is able to sustain itself with minimal external support through adoption of relevant skills and technologies. The grant by KCDF supported promotion of democratic governance and social justice through civic education, peaceful forums and value addition to the existing fish farmers by partnering with social groups, in Lowarengak, Nachukui, Todonyang, Lokitaung and Kaleng' areas in Turkana North.

Grant Amount
Kshs **1,501,625**

11. Community Empowerment Initiative Network (CEIN)

A CBO registered in 2011, CEIN advocates for communities to identify their problems, own them and find means of mitigation through locally available resources for sustainable development. Key activities by the organization center on HIV& AIDS awareness, agribusiness, WASH programmes and environmental conservation.

CEIN partnered with KCDF in strengthening the organizational development and institutional building of 10 affiliate community groups, establishment of Village Savings and Loaning scheme and dairy goat farming for income generation in Kakamega County.

Grant Amount
Kshs **1,296,545**

Youth Development Programme

KCDF's Youth Development Project seeks to empowering young people to gain the ability, authority and agency to make decisions and implement change in their own lives and the lives of other people within their communities.

KCDF continued partnering with youth-led and youth serving organisations across the country in creating and improving opportunities for young people in the areas of employment, life skills and their overall empowerment.

KCDF partnered with the following grantees under the year in review:

1. Youth Development Forum

The Youth Development Forum endeavors to serve the interests of young people through capacity building and advocacy while encouraging their active participation in the construction of a Kibera based on the values of human rights, democracy and mutual understanding. YDF partnership with KCDF aims at addressing the challenge of unemployment among youth in Kibera, through skills transfer on entrepreneurship, financial education and support for startup capital and establishment of small businesses as well as strengthening of the youth revolving fund and continuous mentorship mechanisms.

Grant Amount
Kshs 428,692

2. Regional Institute for Social Enterprise (RISE)

Regional Institute for Social Enterprise (RISE-Kenya) is a local NGO located in Migwani location, Kitui County, working with 25 CBOs and bringing together 100 Self Help Groups. RISE runs programs on climate change mitigation, human rights, HIV & AIDS management, ICT and sports and social enterprises focusing on weaving, aloe vera processing, leather work, poultry keeping, horticulture, tree nursery and microloans in Kitui County. With funding from KCDF, RISE is implementing a youth empowerment project through life skills impartation, entrepreneurship training and business support on aloe vera soap production and mentorship.

Grant Amount
Kshs 431,426

3. Dream Achievers Youth Organization (DAYO)

Dream Achievers Youth Organization (DAYO) was established in May 2005 as a community based organization by a group of young volunteers who capitalized on community theatre as a participatory strategy of disseminating, educating and informing the youth in the community on issues of sexual and reproductive health, human rights, child rights and drug abuse. DAYO's partnership with KCDF is geared towards implementation of a youth empowerment project with the objective of addressing the barriers that hinder business success amongst youth in Mombasa. Through the grant, the organization also seeks to expand the group owned income generating activities that are largely centered on theatre events management.

Grant Amount
Kshs 448,560

4. Let's Change Our Community Youth Group (LECOG)

LECOG Self Help Group was registered in 2010 with a purpose of addressing the plight of youth dropouts leading to immorality and drug abuse in Homabay County. LECOG is working on a youth agribusiness project with the objective to influence positive change of attitude towards agriculture among young people. Through funding from KCDF, the group anticipates that the project will inspire many other youth to venture into agribusiness as a means of alternative livelihoods as well as enhancing food security around the lake region.

Grant Amount
Kshs 450,000

5. Jiamini Organization

The youth CBO was registered in 2012 in Baringo County with the aim of uplifting the living standards in the community through strengthening community participation in social-economic activities that improves their income and food security. The grant to Jiamini SHG sought to facilitate a youth empowerment project to impart modern farming techniques to youth through establishment of demonstration plots consisting of low cost drip irrigation kits for horticultural farming in Kabarnet Ward as a means to alternative livelihood. Financial literacy and entrepreneurship skills training also is also a key component of the project.

Grant Amount
Kshs 448,500

6. Link the Hidden Treasure

Link The Hidden Treasure is a network of young women in Korogocho that seeks to address issues affecting young women and children while finding possible solutions to address those issues. In partnership with KCDF, the group seeks to promote income generating activities by transferring entrepreneurship, life and work readiness skills to young women and men in Korogocho while linking them to microfinance institutions for credit access.

Grant Amount
Kshs 426,195

7. Tharaka Nithi County Youth Network (TNCYN)

TNCYN comprises of 30 members and was registered in 2011 with the main objective of uplifting the standard and live hoods of young people in Tharaka Nithi County. The funded project aims at empowering young people with enterprenuiarial skills, financial education and establishment of a revolving fund to support the youth with business capital.

Grant Amount
Kshs 467,500

8. Ushirikiano Self Help Group

In the reporting period, KCDF partnered with Ushirikiano Self Help Group in a project aimed at scaling-up the group's rocket stove production to meet the rising demand of the cookers in their locality as well as promote environmental conservation. The group is at an advanced stage of forming a rocket stove builders sacco to provide value addition as well as loans to the members.

Grant Amount
Kshs 380,779

Entrenching Local Resource Mobilization (Pamoja4Change) Programme:

The objective of this programme is to promote, through local giving, sustainable community driven projects which build communities' confidence to take charge of their development processes. The programme is informed by the fact that communities inherently have unlimited resources amongst themselves that can be harnessed to promote development.

The programme, courtesy of a unique partnership with a Dutch Non-Governmental Organization Wilde Ganzen, is administered through a competitive grant scheme for community groups who show unique and innovative project ideas for improving the development and general welfare of a community. Communities groups are required to raise 50% of the total project costs with KCDF matching the amount raised.

The P4C Grantees in the year under review included

1. Nkoilale Community Development Organization (NCDO)

Registered in 2010, NCDO is mandated to develop Nkoilale community into self driven and sustainable community/society, through mobilization and equitable use of local resources to enable the community solve their needs and aspiration. KCDF supported Nkoilale Community Development Organization (NCDO) to construct six classrooms in three feeder schools to bridge the long distance that the children had to cover as well as mitigate the threat of human –wildlife life conflict. The organization also set-up a water harvesting system in each of the three schools to improve the general hygiene of the pupils.

Grant Amount
Kshs 5,400,000

2. Eco-Ethics International Kenya

Eco-Ethics International Kenya is a registered national NGO working in the entire Coast region on community driven projects that aim at improving the lives of Kenyans. KCDF partnered with Eco Ethics International in Mombasa County to set up two water harvesting systems in Kongowea and Maweni Primary schools to improve the sanitation of the over 1200 children in the two schools.

Grant Amount
Kshs 915,480

3. Boosting Young Entrepreneurs:

BYE Community Based Organization was formed by youth from Murang'a in 2010 and registered as a CBO in 2012 and mandated to fight poverty and build sustainable rural livelihood through boosting innovative youth entrepreneurs and promoting girls/women empowerment through alternative energy and full time education for girls. KCDF supported Boosting Young Entrepreneurs Community Based Organisation (BYE CBO) to implement a pilot bio-gas project targeting six rural families, two children homes and two schools in Muranga County

Grant Amount
Kshs **843,226**

4. Alemun Pastoralists Empowerment Initiative (APEI)

APEI is a Community Based Organization operating in Turkana County that target pastoralists with a view to initiating, supporting and implementing interventions geared towards enhancing capacities to secure livelihoods for sustainable socio-economic development. KCDF worked with Alemun Pastoralists Empowerment Initiative (APEI) to construct a model 'Ng'keyokok' (Herders) Early Childhood Development Centre for 80 children aged between 1-8 years. The group was also able to install solar lighting to the classrooms to aid adult literacy programmes at the center by offering night classes.

Grant Amount
Kshs **1,462,140**

5. Participatory Research and Development Program

Participatory Research and Development Program is a community based organization registered in Kenya in the year 2005 with a commitment to empower local community based organization and individual members in agribusiness, education and health issues PRDP was supported to implement a solar project to households who are not connected to the national electricity grid. Through the project, more than 20 households have benefited from the project through a revolving fund scheme in Siaya County.

Grant Amount
Kshs **1,794,000**

6. Pearls of Hope Kenya Foundation

Pearls of Hope Kenya Foundation was founded in 2011 and registered in Kenya as a charitable foundation that promotes sustainable development in socially disadvantaged communities in rural and urban Kenya. KCDF partnered with Pearls of Hope Kenya Foundation (PHKF) to construct two classrooms and a toilet in an Early Childhood Development Centre to encourage enrollment and uptake of education in Garissa.

Grant Amount
Kshs **1,008,040**

7. Youth for Christ in Kenya

Youth for Christ in Kenya is a faith-based organization that has been engaged in youth work in this country since 1975. YFC vision is to see every young person in every people group in every nation have the opportunity to make an informed decision to be a follower of Christ and to be disciplined into the local church. KCDF supported Kenya Youth for Christ (KYFC) to implement a reproductive rights programme christened 'Worth the Wait'. The project, targeting 48 secondary schools spread in five counties, focused on reproductive rights and broader sexually-related issues experienced by students in schools.

Grant Amount
Kshs 2,522,800

8. Eagle Rise Christian Church

The organization was registered in 1996 to engage in holistic service for the transformation of the needy in the society by improving the livelihoods of the communities through projects and programmes, while conserving the environment, help improve accessibility of services by the poor and vulnerable in communities and to provide support to orphaned and vulnerable children. KCDF supported Eagle Rise Christian Church in Makueni County to construct and furnish a girl's dormitory in a rescue center - Eagle Rise Girl's Rescue Centre. The dormitory has the capacity to accommodate at least 80 girls.

Grant Amount
Kshs 4,053,550

9. Rural Initiatives Development Programme (RIDEP)

Registered in 2003, RIDEP works with communities in order to improve their livelihood security in Tharaka Nithi County. KCDF supported Rural Initiatives Development Programme (RIDEP) in Tharaka-Nithi County to construct a sewage disposal system consisting of 12 flush-in toilets and one septic tank with a capacity of 10,000 Liters at Marimanti Girls Secondary School.

Grant Amount
Kshs 2,635,226

Food Security

The Food Security Programme dubbed USTAWI seeks to promote a comprehensive approach that seeks to provide a long term solution to food insecurity in Kenya through sustainable agriculture.

1. Langobaya Community Development Programme (LACODEP)

LACODEP is a local organization started in 2004 as a Community Based Organization and fully registered in 2007 as a Non-Governmental Organization based in Langobaya, Malindi.

The grant provided by KCDF sought to address climatic challenges met by Hongera Bwagalau irrigation farmers. LACODEP was supported to sink a borehole which is currently providing clean and silt-free water to 200 Hongera-Bwagalau farmers.

Grant Amount
Kshs 1,602,850

2. Noomayianat Community Development Organization (NCDO)

NCDO was established in 2005 by some residents of Kimana in Loitoktok District, Kajiado County. With the grant received from KCDF, NCDO sought to enhance food security and improve the livelihood of three women groups in Kimana Location through drip irrigation. This was a scale up project after a successful pilot of drip irrigation agriculture technology in Kimana. The initiative has since benefitted 799 households.

Grant Amount
Kshs 995,000

3. Participatory Approaches for Integral Development Organization (PAIDO)

PAIDO is a Non -Governmental Organization based in Yatta region, Kitui County. With grant support from KCDF, PAIDO implemented a seed security project that aimed at enhancing food security through sustainable access to diversified and quality dry-land crop seeds. The project targets to supply good quality seed to approximately 1500 farmer households per season.

Grant Amount
Kshs 635,553

4. Samburu Women Empowerment Integrated Project (SWEIP)

SWEIP is an on-going non-profit community based organization in Maralal whose aim is to empower the pastoral community through capacity building, lobbying and advocacy. The grant provided by KCDF has enabled SWEIP initiate a food security project through the introduction of drip irrigation and improved dairy goat breeds to orphans and vulnerable children (OVC) households in the project area for food and nutritional security.

Grant Amount

Kshs 1,337,534

5. Il Ngwesi Community Trust

Il Ngwesi Group Ranch is a Maasai owned and run ranch in Laikipia district. The group ranch oversees the affairs of the community including land management, conservation and development projects. The grant provided supported the establishment of two (2) greenhouses to two women groups in Ethi and Lokusero. The project sought to enhance food and nutritional security, create a source of income for women in the village and enhance efficient use of water for food production in the manyattas.

Grant Amount

Kshs 910,767

6. IDIO farmers

Idio Farmers, a Community Based Organization based at Taveta, in Taita-Taveta County, started as a business venture to supply quality Tissue Culture (TC) banana seedlings to rural farmers. The group received a grant from KCDF which they initiated TC banana farming for food security and economic empowerment for the youth in Bomeni Ward, Taveta constituency. In the first phase, Idio farmers have supplied 6,000 TC bananas to the youth farmers leading to formation of a banana farmers' cooperative for organized marketing.

Grant Amount

Kshs 998,845

7. Nomadic Women for Sustainable Development (NROWSUD)

NROWSUD is a Non-Governmental organization based in Isiolo that targets pastoralists in North-Eastern Kenya. The grant awarded sought to enhance food security by adoption of drip irrigation technology, poultry keeping and raising of tree seedlings for environmental conservation and riverine protection.

Grant Amount

Kshs 537,207

8. ILLARAMATAK Le Mpusel (Amboseli pastoralist Community Development Initiative)

Illaramatak le-Mpusel is an indigenous Non-Governmental Organization based in Loitokitok, Kajiado County. The NGO works to build the capacities of the member communities through training on relevant skills, providing support services and appropriate technologies.

The grant provided sought to enhance food security and environmental conservation through drip irrigation farming

Grant Amount

Kshs 1,406,350

9. Pastoralist Community Initiatives and Development Assistance (PACIDA)

PACIDA is an indigenous NGO that envisions bridging the gap between the local community and the outside world through community driven initiatives for long-term sustainable benefits. The grants awarded to the group supported one (1) group with a greenhouse for food production as well as economic empowerment of the youth.

Grant Amount

Kshs 1,310,732

10. Eastern Community Development Programme (ECDP)

ECDP is a CBO in Machakos county formed by like-minded group of people with the aim of initiating rural interventions that bring about food secure communities for sustainable livelihood. The grant given supported the implementation of an integrated food security and livelihood project with local farmers in Kathiani and Machakos Central. The integrated project included poultry keeping, drip irrigation for efficient water use and installation of gunny bags for vegetable production.

Grant Amount

Kshs 529,375

Schools supported under the Know and Grow Project.

Name	Location
Nyakahia primary school	South Kanyamwa, Homabay
Nyangiendo primary school	Homabay
Sigisi primary school	Iyabi, Kisii
Sifu island primary school	Bondo
Namahindi primary school	Nambale
Kolo primary school	Rarieda

Education Scholarship Programme

KCDF has been administering education scholarship grants for the last 10 years to needy and deserving children from extremely disadvantaged backgrounds to access education nationally. The scholarship grants are awarded to children who have performed well in their Kenya Certificate of Primary Education and are unable to transit to secondary.

KCDF partners with intermediary organizations to disburse the grants in the reporting period. The selected organizations seek to leverage the KCDF grant by augmenting the grant with funding from other sources thus enabling the students to receive full scholarships. The groups also monitor the wellbeing of the beneficiaries both in-school and out of school.

Some of the groups that partnered with KCDF under The Chandaria Foundation Education Scholarship Grant are listed below;

Education Scholarship Grantees

Grantees	Coverage (County)
Rattansi Education Trust	- National
Streetnizers Ministry Transformational Centre	- Kiambu
Malindi Education Development Association	- Kilifi
EDUMED TRUST	- National
Yangat Girl Child Potential Sensitization Group	- West Pokot
Drylands Community Services	- Nakuru
Tunyai Children's Centre	- Meru
KESHO Organization	- Kilifi
Dhamira Moja	- Busia
Usigu Children's Trust	- Siaya
Kirima Sublocation Education Support Project	- Embu
Kenya Professional Association of Women in Agriculture and Environment (KEPAWAE)	- National
The Kenya Society for the Deaf Children	- National
APEI	- Turkana
Shalom Christian Centre	- HomaBay
KAREDFOD Women's Group	- Migori
Teule Kenya	- Nairobi
Just One Person	- Kakamega



Girl Child Programme Grantees

The KCDF Girl Child Empowerment and Development Programme continued to promote and strengthen its existing work on Girl Child initiatives by partnering with organisations who share the same vision as KCDF in ensuring vulnerable and orphan girls complete their education and enhance their skills through life skills training and mentorship.

Currently, the Girl Child Programmes supports **564 beneficiaries** from disadvantaged backgrounds; **537** Young Women & Girls and **27** Young Men through the Window of Opportunity initiative.

The beneficiaries were supported through the generous contribution of:

Private Sector Partners	Number of Girls supported
ATE Bank	35
Deloitte	4
Equity Bank	24
KPMG East Africa	4
MasterCard Foundation	24
Standard Chartered Bank	23
USAID	564
Kenya Law Report	2
Old Mutual	1
Surgipharm	1
Zep-Re Reinsurance	1
Monsanto Fund	5

Strengthening of Local Civil Society Organizations (Capacity Building)

EWUASOANG Community Based Organization

The group is a community based organization established in 2009 to serve the interests of marginalized groups in the local community of Ewuaso Nkidong in Narok County. The project aimed at supporting Maasai women to develop a sense of worth, individual ability, and capabilities. The group was supported to train maasai women on the rights as enshrined in the new constitution, enhance information flow and create forum for women to express themselves.

Grant Amount
Kshs **1,917,100**

Kisumu Youth Football Association

A sports-for-development organization registered in 2009 that uses football as a tool for social change. The project aimed at enhancing confidence and participation of vulnerable girls and mentally-disabled children through football.

Grant Amount
Kshs **1,848,500**

Youth Fighting against HIV & AIDS in Kenya (YOFAK)

YOFAK is a youth led non-profit making community based organization formed in Homa Bay County formed with the main aim of reducing HIV/AIDS impact as well as poverty alleviation amongst the vulnerable population of Homa Bay County. The project aimed at improving the livelihood status and household income for families of people living with HIV and AIDS. Youth Fighting against HIV & AIDS in Kenya (YOFAK).

Grant Amount
Kshs **783,750**

Trans-Nzoia Youth Sports Association (TYSA)

TYSA is a CBO registered in 2009 and committed to working with marginalized and vulnerable children and youth to discover and nurture talents, make education accessible, offer safe spaces and promote girls participation in decision making process while promoting inclusion of children and youth with disability in community life.

The project sought to create a model that would socially and economically empower the girl to champion for her rights as well as promote education of girls.

Grant Amount
Kshs **1,890,800**

Centre for Human Rights and Governance (CHRiG)

CHRiG is a registered community based formed in 2007 to advocate and promote realization of human rights in North Rift Kenya. The project sought to enhanced women participation in decision making at the grass-root level.

Grant Amount
Kshs **1,504,960**

VIWANGO

Viwango is an independent, standards setting and certification organization for Civil Society Organizations in Kenya. Viwango is Swahili for “Standards” and the organization’s primary role is to promote the adoption of minimum quality standards by Civil Society Organizations with the standards being utilized as universal foundation for good organizational practice. The project sought to put up a mechanism to strengthen the on-going work of CSO certification to improve performance of CSOs through promotion and application of minimum standards and voluntary independent certification.

Grant Amount

Kshs 5,028,812

Sponsored Arts For Education (SAFE)

A Kenyan NGO and UK charity that uses the performing arts and community programmes to inspire and deliver social change. The project sought to use arts to create awareness and equip leaders with knowledge and skill on peace building and social transformation for social justice peace and security.

Grant Amount

Kshs 1,914,240

Ngaremara Community Based Initiative (NGATUR)

NGATUR was registered in 2008 comprising of 24 members elected from 12 major vil-lages within Ngaremara location The main objective of the organization is to improve the livelihood and build local democracy of pastoralist communities. The project objective was to create spaces for dialogue between women, men and local leaders on land rights; a critical factor in ensuring security in the area.

Grant Amount

Kshs 1,789,000

Ogiek Peoples Development Program(OPDP)

OPDP was founded in 1999 by Ogiek elders, opinion leaders, farmers and professionals after long land historical injustices that deprived Ogiek community of its rights as Kenyan citizens. The group was supported to establish a model project for the Ogiek women groups to increase their household income, and improve living conditions through poultry and bee keeping.

Grant Amount

Kshs 1,789,000

Kituiuni Rescue Youth Group

Kituiuni Rescue Youth Group is a community based youth group in Kitui. The group was supported to impliment a project that sough to enhance capacity of 100 existing beneficia-ries to engage in IGAs while building the group’s capacity to mobilize local resources for socio-economic oriented development initiatives.

St Peter’s Community Network– Northern Kenya (SAPCONE)

A local NGO comprising of nine community-based organizations in Turkana County and governed by 11 council elders. The group was supported to implement a project that fo-

Grant Amount

Kshs 1,501,625

cussed on strengthening community participation to promote good governance and social justice. The project also sought to economically empower the group by providing fishing gears, floaters and twines to the most vulnerable members of the community to promote the fish industry in the locality.

Community Empowerment Initiative Network (CEIN)

CEIN is a CBO registered in 2011 with a vision of promoting health health in Busia County. The grant support given to the group was aimed at supporting CEIN to deliver better quality services in a more cost effective manner to residents of Busia County through their 10 Self Help Groups.

Grant Amount
Kshs 1,296,545

Blind and Low Vision Network (BLINK)

BLINK was registered as an NGO in 2003 with the sole purpose of advancing the welfare of visually impaired persons and prevent the occurrence of total blindness of visually impaired people in Machakos County. The group was supported to initiate an advocacy and an economic empowerment project for people with disabilities. The project also sought to facilitate information and service provision in health, mobility and legal rights issues for persons with disabilities.

Grant Amount
Kshs 1,746,843

Grassroots Development Initiative Foundation (GRADIF-K)

GRADIF-K is a local foundation that endeavors to be a champion for sustainable development of grassroots communities in Kenya by facilitating their empowerment through advocacy, capacity development, partnership and networking so that they can actively engage in sustainable development guided by equal opportunities for all. The project supported sought to enhance participation of women in political leadership, implementation of the New Constitution and decision making in Laikipia County.

Grant Amount
Kshs 1,999,800

Youth Initiatives Kenya (YIKE)

YIKE is an NGO registered in 2003 that works with over 60 youth groups within the informal settlement across Nairobi. The group was given the grant support to work with 10 youth groups/organizations to strengthen their structures and systems in implementing entrepreneurial activities to increase their income.

Grant Amount
Kshs 1,301,095

Great Lakes University of Kisumu

GLUK is a non-profit community based training, research and development institution. The institution was supported to promote and increase awareness on water hyacinth's productive use particularly as a source of biogas fuel for heating and lighting, and manure for fertilizing crops.

Grant Amount
Kshs 1,880,000

Tears Group Kenya

Is a local NGO based in Nakuru County. The organisation was supported to establish of a youth business incubation center to promote youth enterprenuship and life skills through training and mentorship of 70 youth.

Grant Amount

Kshs 2,110,240

Riziki Kenya

Riziki Kenya is a local NGO that exists to transform lives through providing an enabling environment for holistic child development and empowering the community for self reliance. The group was supported to provide a reliable, affordable, safe and efficient source of light by making solar lamps accessible to the poor people in Transmara.

Grant Amount

Kshs 1,415,700

Nyandarua Central Youth Empowerment Initiative

The group is a CBO based and working within Nyandarua Central District of Nyandarua County with a focus to empower youth in Nyandarua through provision of skills that help the youth gain access to gainful self employment and income generation. The group was supported to scale up a rabbit rearing project while introducing value chain addition to ensure young people make meaningful income from their agri related enterprises.

Grant Amount

Kshs 1,898,889

Daisy's Eye Cancer Fund (DECF)

DECF was registered as a local NGO in 2007 and constitutes the implementation arm of the DECF offiices in the UK and Canada with the vision of bringing the promise of life and sight to every child with retinoblastoma - a type of eye cancer. The group was supported to expand DECF's Kenyatta National Hospital piloted cancer registry to a countrywide registry.

Grant Amount

Kshs 3,895,029



KCDF Trust Report



Word from the KCDF Trust Chair

Ladies and gentlemen, I take this opportunity to share the highlights and performance of the KCDF Trust in the last 12 months ending 30th September 2013.

The year 2013, being the 1st year of elections after the promulgation of the new constitution, was characterized by high political stakes. The election fever slowed down any significant economic development. The change of guard at the political front was however smooth and did not have a significant effect on investments.

During the year under review, the endowment funds grew from KES 542,046,856 at the beginning of the financial year to close at KES 617,444,943, which represents a 14% increase. This happened against a yield withdrawal of KES 35,249,174 to support the foundations relocation process as well as a number of community asset builders accessing their yield payout. The realized income reached a high of KES 85,844,013 compared to previous year income of KES 57,779,902 (which represents a 49% increase on investment income). Capital appreciation (gain) during the year was KES 27.2 Million compared to year 2012 gain of KES 30.7 Million.

The planned Pangani Property development was delayed due to technicalities and financing which have now been addressed. We are still optimistic that the venture in properties will increase the value of the investment significantly when the project is completed in the estimated time of 24 months (Year 2016). I trust you will enjoy reading this report which captures some of our achievements.

A handwritten signature in black ink, appearing to read 'Isaac Wanjohi', written in a cursive style.

Eng. Isaac Wanjohi
KCDF Trust Chair

FINANCE

KCDF Trust

Statement of Net Assets at 30th September 2013

		2013	2012
	Notes	KShs.	KShs.
ASSETS			
Bank balances	8	571,731	2,766,336
Deposits with banking institutions	9	129,762,438	279,180,398
Government securities	9	317,953,558	122,557,186
Corporate bonds	9	36,424,201	27,324,353
Quoted equity	9	121,898,733	106,896,140
Off-shore investments		2,335,617	-
Withholding tax recoverable		749,774	15,972
Dividends receivable		664,468	623,920
Work in progress	10	10,157,533	5,056,378
Total assets		620,518,053	544,420,683
Liabilities			
Payables	11	3,073,110	2,373,828
Total liabilities		3,073,110	2,373,828
Fund Balances			
Endowment funds		617,444,943	542,046,855
Total Liabilities and Fund Balances		620,518,053	544,420,683

Figure 1:
**KCDF Endowment Fund
Proportions**

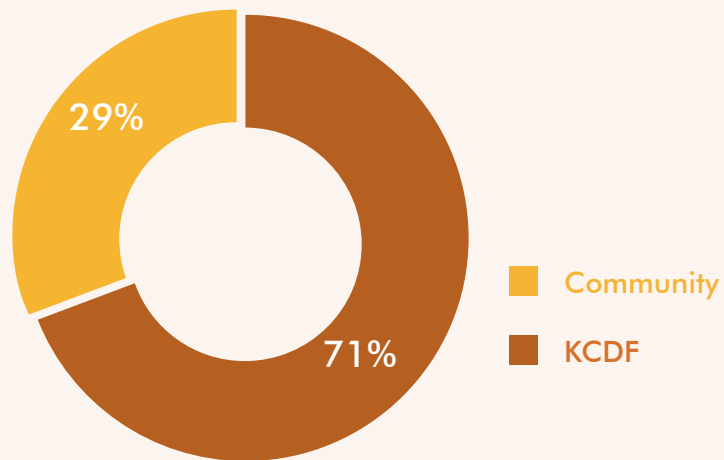
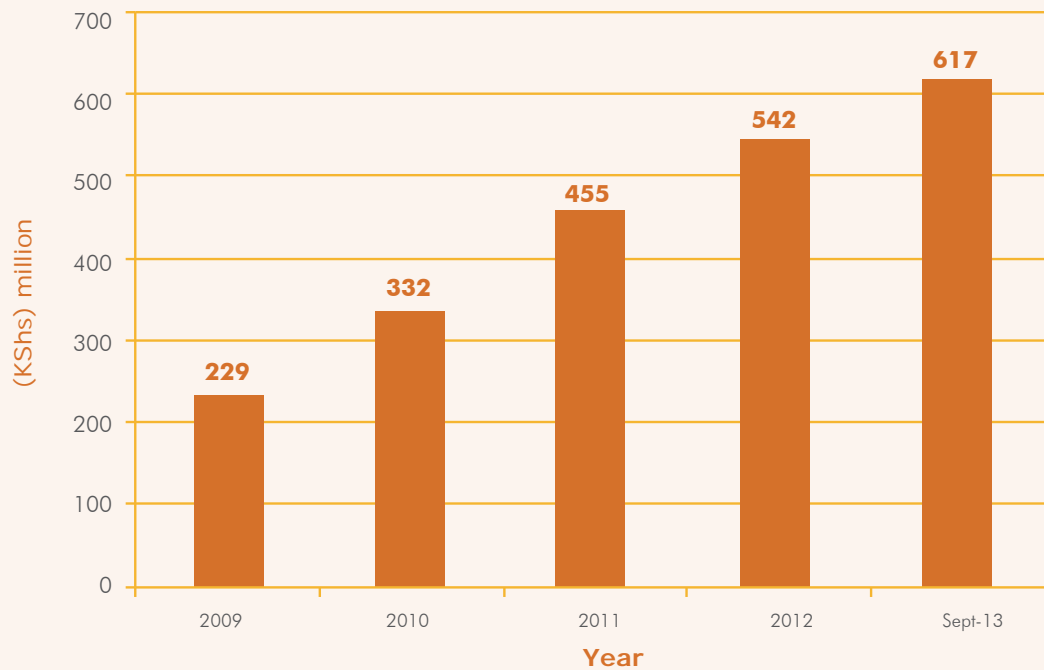


Figure 2:
ENDOWMENT STATUS



Trustees

Eng. Isaac Wanjohi (Trust Chairperson)
Ms. Atia Yahya (Foundation Chair and Trustee)
Prof. Mohammed Abdullah (Board Member & Trustee)
Dr. Vijoo Rattansi
Mr. Kibuga Kariithi
Mr. Donald Kaniaru

Friends of KCDF USA-Board Members

Elchi Nowrojee	Joyce Malombe
Fred Cooper	

Staff Members

Catherine Kiganjo - Programme Coordinator - Girl Child Program
Caesar Ngule – Senior Programme Officer
Catherine Ombasa – Programmes Assistant
Dennis Gitari - Accounts Assistant
Evelyne Njoroje - Programmes Assistant
Francis Kamau - Finance and Investment Director
James Muriuki - Logistics Assistant
Janet Mawiyoo - Chief Executive Officer
Kevin Munjal – Monitoring and Evaluation Officer
Lilian Pamba – Financial Accountant
Lynnette Micheni – Programme Officer
Maureen Oduori – Senior Programme Officer
Maureen Chege – Finance Assistant
Melvin Chibole – Communications Manager
Mercy Maneno – Human Resource Officer
Mercy Mulevu – Programme Officer
Natasha Murigu - Communications Assistant
Oliver Konya - Logistics Officer
Purity Murugu - Corporate Fundraising Officer
Sarah Munyua – Grant Management Accountant
Tom Were – Programmes Director
Wairu Kinyori – Programme Officer

Board Members

Ms. Atia Yahya (Foundation Chair and Trustee)
Prof. Mohammed Abdullah (Board Member & Trustee)
Mr. Arthur Namu (Foundation Vice Chair)
Ms. Nuriya Farah
Mr. Edmund Mudibo
Ms. Eunice Mathu
Mr. Tom Olila
Dr. Sheth Chandu
Ms. Janet Mawiyoo (CEO & Ex Officio Member - Trust & Foundation)

Community Fund Developers in 2011/2012

Hope Trust Fund
ACK Eldoret region CCS
Good Samaritan
South Imenti Development Association (SIDA)
Othaya Bursary Fund
Starehe Girls Centre Fund
Makutano Community Development Association
Omega Child Shelter Fund
Genesis Development Fund
Kenya Professional Association of Women in Agriculture and Environment (KIPEWAE)
Women Concern
Education and Medical Trust Fund
Ngolonya Community Aid Programme
Lake Region Development Association
Support Activities in Poverty Eradication and Health (SAIPEH)
Malindi Education Development Association
Yahya Family Fund
Dr. Julia Gitobu Education Fund
Kirima Education Support Project
Usigu Children Trust
Zinduka Africa
The Wanyiri Kihoro Fund

FRIENDS OF KCDF

Staff Payroll Contributors

Janet Mawiiyoo	Melvin Chibole	Mercy Maneno	Natasha Murigu
Tom Were	Purity Murugu	Wairu Kinyori	Lynette Gacheri
Francis Kamau	Caesar Ngule	Maureen Oduori	Sarah Munyua
Catherine Kiganjo	Oliver Konya	Mercy Mulevu	

Girl Child Supporters

Scholarships

Private Sector Partners

No. of Girls supported

ATE Bank	35
Deloitte	4
Equity Bank	24
KPMG East Africa	4
MasterCard Foundation	24
Standard Chartered Bank	23
USAID	581
Kenya Law Report	2
Old Mutual	1
Surgipharm	1
Zep-Re Reinsurance	1
Monsanto Fund	5

Internships

Amiran Kenya
Diamond Trust Bank
Deloitte
Ecolab
Equity Bank
General Motors
KLM
KPMG
Serena Hotels
Standard Chartered Bank
Surgipharm
Zep-Re Reinsurance

Girl Child - Contributors & Mentors (Corporate)

Amiran Kenya	KLM	PWC
Barclays	KPMG	Safaricom
Citi Foundation	MasterCard Foundation	Standard Chartered Bank
Deloitte	Microsoft	Total Kenya
Equity Bank	Old Mutual	Zep-Re
Hot Point Appliances Ltd	Orange	
Kenya Law Report	Proctor & Gamble	

Girl Child - Individuals Contributors

Trufena Ogol	Florence Mwasharo	Doris Wambui	Jane Maffet
Hope Murera	Sr. Genevieve Nduku	Fawzia Ali	Mama Sarah Obama
Cathreen Bukachi	Florence Kimani	Bibiana Elman	Adriana Leahy

Girl Child - Other Support

CISCO - Software Solutions	Microsoft - IT Labs
Citibank - Mentor Events & Life-Skills Workshops	Old Mutual - Financial Literacy Workshops
Deloitte - Mentor Events	Preferred Personnel - Life-Skills Workshops
General Motors - Transportation	PwC - Mentor Events
KDN - Internet at Starehe Girls Centre	Safaricom - IT Labs & Mentor Events
KPMG - Mentor Events & Laptops	Sarova Hotels - Accommodations

Boy Child - Financial Contributors & Mentors

Chief Justice Dr. Willy Mutunga
Michael Murungi

Education Programme - Financial Partners

Chandaria Foundation
Hope Trust Foundation
Mr. Davinder Singh

Asset Development Advisors (Pro-Bono)

Arch. James Gitoho - Triad Architects
Mr. Jitu Wadia – Wadia Constructions Ltd
Mr. D. S. Devgun

Policy, Research & Advocacy Partners (Pro-Bono)

Strathmore Tax Research Centre - Daisy Ogembo	Southern Africa Trust	Rattansi Trust - Dr. Vijoo Rattansi
Akiba Uhaki Foundation - Ezra Mbogori	EAAG - Nicanor Sabula	RSM Ashvir - Ashif Kassam
Rockefeller Foundation - Mwhaki Muraguri	KCB Foundation - Rechael Gathoni	Mediamax – The People Newspaper
Chandaria Foundation - Dr. Manu Chandaria		

Community Open Golf 2013 Supporters

Corporates

Mater Hospital	Viva	Octagon Pension Services
Kenya Airports Parking Services	Hass Petroleum	Amiran Kenya
CBA	Distell	Hillpark Hotels
I&M Bank	KCB foundation	Polo Industries
OMAM	Modular Interiors Ltd	Hotpoint Appliances Ltd
Kimisitu sacco	IQ Plus	Kagiso Trust
AMS properties	Citi Bank	Travel Creations
The Boma	NIC Bank	

Individuals Contributors

Jane Munene	Richard Mambo	Geoff Tooth
Joyce Ollunga	Onesmus Githinji	Rajan Jamnasass
Jackson Mbuthia	C. Waiganjo	Phyllis Nyakuba
Janet Mawiyoo	Mbuthia J Mwai	Edmund Kabeera
Ben Wandawanda	Amos Ndehi	Jeremy Brooks
Sarbana Simanjuntah	Dr. Nyamu	Mr Sam Muumbi
Nicholas Rokoine	Itote	Mr Donald Kaniaru
Kenneth Wamae	E.M Kinyua	Edmund Mudibo
Susan Kanyoro	Martin Mwangi	Nuriya Farah



The Chief Executive Officer

Kenya Community Development Foundation | Morningside Office Park, 4th Flr, Ngong Rd
PO Box 10501-00100 Nairobi, Kenya | **Telephone** (+254 020) 3540239/8067440/01/02
Office Cell (+254) 722 168480/736 449 217 | **Fax** +254 20 8067440
Email info@kcdf.or.ke | **Website** www.kcdf.or.ke