




**DELIVERING  
LASTING  
CHANGE** ANNUAL REPORT  
2009/2010

**KCDF**   
people, giving and working together



**For only Kshs. 250 (US\$3)** every week, I can help another mother with day care so she has time to work and fend for her children.

M-PESA PAYBILL NO **522 800**

<http://education.kcdf.or.ke>



## CONTENTS

The Vision Of The New KCDF Chair	4
Word From The Trust's Chair	6
CEO's Comments	8
Programme Scorecard For 2009 - 2010	10
Youth Development Programme	12
Education Scholarship Programme	14
Community Food Security	16
Girl Child Programme	18
Early Childhood Development	20
Community Open Draws Massive Participation	22
African Philanthropy	26
Community Asset Building Programme	30
The Numbers	31
KCDF Grantees	36



# THE VISION OF THE NEW KCDF CHAIR



I am greatly humbled by the vote of confidence the KCDF Board and Trustees have vested on me by choosing me to take the mantle of the KCDF chairmanship from Professor Mohammed S. Abdullah who has done such a commendable job for nearly ten years. Under his able leadership, KCDF has not only been able to undertake successfully the transitioning of the founder CEO, Ms Monica Mutuku, and all the founder members of KCDF, but has also retained the vision and mission of the organization and entrusted it to faithful men and women who are now carrying the mantle forward.

KCDF has in the meantime grown tremendously, to become a renowned development actor in the country and internationally. Our overall annual budget has doubled by the end of 2010, from about Kshs. 60 Million (about US\$ 800,000) in 2004, and we anticipate much higher projections in the next five years. Our outreach within Kenya has also expanded tremendously, with over 300 communities being reached currently in a variety of programmes that are enhancing, in different ways, people's ability to be active in shaping their own destiny. The areas covered now include food security, education of needy

children and especially girls, support for youth empowerment and entrepreneurial activities, just to mention a few. Capacity development has been incorporated as a key component in majority of grants, to ensure that the emerging actors are able to attract alternative funding as they become shining lights in their environments. Our website [www.kcdf.or.ke](http://www.kcdf.or.ke) speaks for itself.

It is, therefore, against this background that I am humbled and challenged by where we must go as we look to the future, especially in the next coming five years or so:

We must continue to grow our grants portfolio as well as diversify the sources of funds, since the needs on the ground are increasing. We will continue to support needy communities to be active participants in shaping their own development agenda and destiny, since their voice is what will continue to inform our work. We need to continue building our experiences in working with corporate foundations and other progressive companies as part of this diversification, and seek to influence their development paradigms.

 "People will remain a central part of our work in everything we do." 

The official figures still point to over 48% of our population living in poverty, therefore we must continue to target the needs accurately and with relevant programmes for vulnerable groups including women and girls (without forgetting the boy child), communities in Arid and Semi-Arid Lands (ASAL) areas that still lack food and many basic necessities, and other marginalised groups in the country.

People will remain a central part of our work in everything we do. A critical part of our work will be to continue investing in them and widening their world view so that that they can embrace new technologies and knowledge that has worked elsewhere, as well as investing in growing good leadership that will promote good governance even in their small initiatives.

We must, however, put much more effort in growing the KCDF Endowment to be able to achieve our ambitious goals and objectives, since our work is long term. The example of payroll giving that has been set by a good number of the KCDF staff is one to be emulated by all of us – wherever we are.

I will commit to work very closely with all the KCDF Board members and Trustees to do exactly this: lead by example, by regularly putting our resources and influencing our friends to do the same, so that KCDF remains a leading example of what needs to happen not just in Kenya, but in many African countries where we must rise up and become the change we want to see in our communities.

**Atia Yahya**  
Chair – KCDF Board

# WORD FROM THE TRUST'S CHAIR

## A BRIGHTER YEAR FOR KCDF

The financial year started on a positive note, after two years of economic down turn, as the country was recovering from the effects of post election violence. At the national level, investor confidence had been achieved through the economic stimulus programme and hastened infrastructure engagement and funds that were trickling in, therefore, jumpstarting the economy.

In 2009, KCDF marginally increased its funding level by 3% to US\$1.32 million, while the spending level went up by 6%, which saw the surplus for the year reduce to US\$69,173. However, in spite of maintaining the funding level, new entrants - Trust Africa, Rockefeller Foundation, Urgent Action Fund and African Women Development Fund – came in to support the African Grantmakers Network Conference, which was held in early November 2010. Safaricom Foundation also doubled its support towards the food security initiative - Ustawi. Chandaria Foundation increased the allocation to scholarships by 25%. The traditional KCDF partners - the Ford Foundation, Bernard Van Leer Foundation and the Japanese Social Development Fund in collaboration with the World Bank - maintained their funding levels.

"..investor confidence had been achieved through the economic stimulus programme and hastened infrastructure engagement and funds..."



KCDF managed its expenditure well in the past year. This enabled the organisation to increase grants disbursements to partner organisations by 12% (from US\$462,500 to US\$ 524,000 the previous year).

## INVESTMENT AT THE KCDF-TRUST

This was a bright year for the fundbuilders in the endowment as the economy grew significantly. There was increased investor confidence which saw the fund appreciate by 45% from US\$ 2.87million to US\$ 4.15million. This included both the real return on investment and the capital gains. The prudent action now is to cap these gains to avoid any significant loss in the coming years.

While the political heat is likely to increase in the coming year as the country approaches the electioneering period, analysts predict that there will be positive developments in the economy, bolstered by the revived traditional movers of Kenyan economy: the tea sector and tourism.

**Eng. Isaac Wanjohi**  
Chairman, KCDF Trust

Some of today's greatest leaders were underprivileged children. The best gift they got was an education.



**For just Kshs. 40,000 (US\$ 500) a year, you can see a student through a year of high school.**

**M-PESA PAYBILL NO 522 800**



## CEO'S COMMENTS

Our work with various communities in Kenya continued to energize us in 2010, as we saw various communities experiencing transformation. In particular, the communities from marginalized areas who saw the value of embracing new technologies for growing food were quite excited about their new gains in food production and began to see the possibilities and potential of better yields and income.

In order to do this, they needed to find ways to resolve some of the challenges they face such as more timely access to technical support, and scaling up their operations to make economic sense. In many cases, the community based organizations and their leaders, became the centres of dissemination of these new technologies, as well as forums to shift mindsets about how to practice agriculture as they have known it for generations.

KCDF has gone through a steep learning curve through the expansion of this food production programme, popularly known as Ustawi. We have learnt that there is a grave need to work with government and other players to enhance the availability of timely technical support for the farmers. In addition, we have seen the need to increase access to information on the most appropriate approaches that farmers can adopt based on their unique situation, including the best seeds for different areas and soils.

*"If your plan is for one year plant rice. If your plan is for ten years plant trees. If your plan is for one hundred years educate children."*

We have started to generate opportunities for exchange visits as these shorten the learning curve for farmers as they see what others have done. We have also continued to recognize that more sustainable ways of conserving is a critical action that needs to go with all the food security interventions, as it forms the basis of whether or not they will succeed.

KCDF will find more effective ways of supporting partner organizations to establish effective mechanisms to monitor the individual adoption of new technologies at household level and to track challenges and changes taking place. Such information will become a great basis to inform advocacy platforms and highlight areas where government needs to act more precisely to protect and promote the small farmer.

At another level, one of the big lessons reinforced by the recent global economic crisis, is the great value there is for philanthropic institutions and other non-profits working with disadvantaged communities, to give much more focus in diversifying their incomes, to ensure their work is less vulnerable in global recession periods. While we have done our best to keep this focus as KCDF, it was clear we need to extend more focused support to the more established partners as one of ways of ensuring their work is stable and can continue, even when major donors change their strategic areas of focus (like it happened in a number of cases in 2010) or when funding stops altogether.

As a result of this increased awareness, we worked in a more focused way throughout the year, especially with our early childhood partners, to help them access more professional support and resources to strengthen and diversify their incomes. Many of them have since begun to see the results of these efforts, which they now reinvest into their programmes. We recognize that this investment must continue for a while before it can truly become reliable, but the change in mind-set which has happened is always the first step towards great change.

I welcome you to read these and many other amazing stories about our work in 2010. I am very proud of the passion, dedication and long hours that many of our staff have continued to put into this work. Without their selfless service, we would not make the strides we have continued to make among our beneficiary communities, as well as institutionally. I also want to thank all our partners, supporters and friends, who make it

## MY HIGHLIGHT IN 2010

One of our highlights in 2010, was to see more of the girls sponsored under the Girl Child Programme, through the Global Give Back Circle. The programme focuses on successful transition of girls through basic exposure training and tertiary colleges and finally launching them back to society as qualified professionals with a commitment to give back. A total of 24 were admitted to local universities in 2010, 3 to International universities and 9 to various Diploma Colleges after successfully being supported and mentored through their gap period.

The girls have become instrumental in getting more companies to commit not only their resources but also their time to mentorship programmes for their employees. We were proud to see the Mastercard Foundation and companies like Deloitte and Touche Kenya, Standard Bank, KPMG, just to name a few (join the group of growing companies interested in supporting this work. Both the Starehe Girls Centre and St. Martins Girls Secondary School, have been our major focus schools for this work since they only admit girls from very needy and vulnerable families. We are working hard to see this programme grow even more to impact more girls and to work with more schools, since girls in need of this support are quite many compared to the few existing programmes.

possible for us to touch the lives of many people and to give them hope, despite the challenges they face daily.

In this new World 'arrangement', where global trends can result in a big hit to local programmes, it is critical that KCDF continues to intensify its efforts to draw more individuals and companies operating in Kenya, to take a greater interest in investing in more effective partnerships with local organizations that are doing credible work in disadvantaged communities.

Our partnership on Ustawi with Safaricom Foundation remains a shining example of this kind of relationship. This relationship has provided us with the flexibility to provide the needed capacity building support to selected communities who have committed to pursue better options to address their food insecurity. The partnership also allows benefiting communities to access more knowledge on viable options and to propose what can work for them in recognition of the fact that 'there is no one solution that fits all'. We therefore need to encourage more companies to allow needy communities to drive their agenda by supporting them to acquire a better understanding of factors that have affected them negatively, and how they can be addressed, and agree to be less prescriptive of what we think is wrong and what we think should be the solution.

In November 2010, KCDF had the privilege and pleasure of being the lead host organization of the first African Grantmakers Network Assembly, which was held in Nairobi from the 3rd to 5th. This unique forum strengthened the recognition and profile of KCDF's work continentally and globally as a Kenyan based, Kenyan led national philanthropic foundation. It gave us an opportunity to share a lot of our lessons from working among grassroot communities, and also to see the connections of what we are doing in Kenya with the rest of Africa and beyond. KCDF worked with the members of the AGN Steering Committee who are spread out in other major countries such as Ghana, Nigeria, South Africa and Senegal to mark a major milestone in the whole philanthropy discourse in Africa.

The process of establishing a secretariat to take a lead in the follow up of the implementation of the resolutions of the conference has already begun. As Co-Chair of AGN during this period, I want to thank everyone who made it possible for their support and dedication. (See photos of the Assembly on Pages 28 and 29)

*Janet Mawiyoo*  
**Janet Mawiyoo**  
Chief Executive Officer



## PROGRAMME SCORE CARD FOR 2009-2010

### BETTER OPPORTUNITIES FOR KCDF AND THE COMMUNITIES

In our last annual report (2008/2009), we noted that the financial year was arguably the most challenging period for KCDF in its programmes and capacity building support to communities in Kenya. During that period, the country experienced prolonged drought that saw many farming communities lose crops and most of their livestock, thus depending on food relief from government and well wishers. This was also the period during which the country was gradually recovering from the effects of the 2007/2008 post election unrests and the resulting economic setbacks. In response to the two back to back events, KCDF's programmes had to be adjusted accordingly to respond to the new challenges. This demonstrated our internal organizational flexibility to respond to emerging urgent issues of national interest.



KCDF had more than **US\$1.025 Million** to provide as scholarships and grants to children and community organizations across the country.

We are happy to note that 2009/2010 was better and marked improvements were realised. Our grants to community work increased from Kshs. 37,465,899 (US\$499,545) to Kshs. 41,882,296 (US\$ 530,000). The number of community organisations we work with increased from 123 to 133, while the total number of households that we impact increased from 1.05 Million to 1.7 Million. The overall programme turnover increased from Kshs 98.6 Million (US\$ 1.3 Million) to Kshs 102 Million (US\$ 1.36 Million). These changes can be attributed to increased fundraising efforts of the programme team and the resilient, forward looking and determined communities across the country, taking leadership in addressing their development priorities.

In the last year, KCDF continued to support various community initiatives as follows:

- Through the Youth Development Programme with funding from the Japanese Social development Fund through the World Bank, KCDF supported more than 60 existing and new youth projects;
- Through the Early Childhood Development Programme with financial support from the Bernard van Leer Foundation (Netherlands), KCDF continued to support nine community initiatives in Eastern and Coast regions of Kenya reaching more than 300,000 children;
- Through the Education and Scholarships Programme with financial support from the Chandaria Foundation and private sector partners, we provided more than 100 partial education scholarships to bright, needy high school students across the country with particular focus on girls and marginalised regions of the country. Through the Girl Child Support Programme in partnership with Global Give Back Circle (GGBC, USA) and funding from the ATEbank (Greece), we supported more than 250 girls in various stages of their high school education, in between high school and tertiary education and those pursuing their tertiary education;

- Through our Food Security Programme, with funding from the Safaricom Foundation (Kenya), we broke ground into nontraditional food shortage regions supporting communities to undertake effective post harvest practices, diversification into fish farming, poultry farming, among others. This helped upscale the scope and outreach of the programme. This was necessitated by the fact that the impact of the prolonged drought continued in various parts of the country and the need to expand the goal to cover nutrition and economic activities of the communities.

In total KCDF had more than US\$1.025 Million to provide as scholarships and grants to children and community organizations across the country.

Fully aware that unless we form strategic and beneficial partnerships and collaborations, we may not be able to achieve greater impact and sustainability of our work, KCDF has continued to seek and establish various forms of partnerships. During the year, KCDF established new and potential partnerships in various areas of our work. The organisation entered into a new partnership with Youth Employment Network and the International Labour Organization in a programme seeking to nurture and develop youth's entrepreneurship skills development as well as creation of new employment opportunities. This partnership is being executed through the Youth Entrepreneurship Facility in three East African countries i.e. Kenya, Uganda and Tanzania simultaneously. KCDF is the lead organisation in Kenya.

As we look forward to continue growing our strategic partnerships and further diversify our programmes and reach in the coming year we shall continue to count on your continued support.

**Tom Were**  
Programmes Director





**Kshs. 25.6 Million**  
granted to **21** organisations  
reaching **15,000** youths

In Barpello Division, East Pokot district, Barpello Women's Youth Group established a bee keeping project that is giving young people some means of livelihood. The group is also undertaking anti-Female Genital Mutilation (FGM) campaigns and promoting safer alternative rites of passage for young girls from the district.

Among the organisations serving persons with disabilities, Barani Jamii Self Help Group, trained over 200 hearing impaired youth in tailoring and welding in Malindi town. Many of them have already gone ahead and started businesses. Immanuel Deaf Youth Group, on the other hand, took over 50 hearing impaired youth from Nairobi through a business mentorship programme. As a result of this, many of them have now started businesses.

In total, the Youth Development Programme in 2010 gave grants out totalling about US\$341,333 (Kshs. 25.6 Million) to 21 organisations, therefore reaching at least 15,000 youth directly and indirectly. In 2011-2012, the programme will focus on wealth and employment creation for young people by supporting youth led organisations with funding to support innovative youth led projects that promote entrepreneurship skills transfer as well as employment creation. This will be implemented under the new partnership with the Youth Entrepreneurship Network, YEN - an initiative of the International Labour Organisation.

constituencies. They were also encouraged to train other young people in their communities. The beneficiaries of the programme went ahead and trained their peers and also identified flaws in the administration and utilisation of a number of devolved funds. Through such undertakings these young people not only contributed in improving their communities but also understood the challenges facing their communities in depth.

In the past year, the youth trained under the leadership development component of the programme also continued to impart their peers with leadership values as well as show leadership in their communities. These young people perpetuated "Shabaa" the collective identity or network that came from this effort – and established regional chapters to address in a structured way the various challenges facing their communities. One success story out of this effort was that the youth ("Wanashabaa") actually took part in promoting reconciliation in the areas that were worst hit by the post election violence such as Eldoret, Kisumu and Naivasha.

They also showed leadership in tackling the challenge of deforestation of water towers. A case in point is the Shabaa Rift Valley Network that planted over 1,000 trees in Mau Forest, Cherangani Hills and Mt. Elgon – three of the five water catchment areas of the country, through an initiative known as "Vijana Twaweza, Mau Go Green."

As part of up scaling the Youth Development Programme, KCDF also prioritised on programmes targeting youth from the marginal and minority communities as well as those living with disabilities. These efforts were targeted at improving their livelihoods as well as fostering their inclusion and participation in their communities. Among the organisations that benefitted from this support was Malka Bisanadi Cultural Village Community Based Organisation, a youth led organisation. The organisation trained young people from Kinna location, Isiolo County on hospitality, marketing skills and customer care – skills that they are now utilising to manage Malka Bisanadi Cultural Village (their resort) themselves.

**Sonia Rasugu**  
Co-ordinator, Youth Development Programme



## Youth **Development** Programme

### YOUTH TRANSFORMING THEIR COMMUNITIES

2010 was a landmark year for Kenya, particularly for the youth. It was the year that Kenyans voted for the new constitution, a development hailed as a break from the past and a walk into a reborn country. During this watershed moment for the country, KCDF Youth Development Programme continued to work with youth across the country to promote their inclusion in the country's development processes as well as improve their lives through various empowerment initiatives.

Through the Social Accountability component of the programme, for instance, KCDF trained young people across the country on strategies of monitoring services provided to them at the community level, by the public authorities. The participants were challenged to monitor the utilisation of devolved funds such as Constituency Development Fund (CDF) and Local Authority Transfer Funds (LATF) in their



# Education Scholarships Programme

## BRIGHT, NEEDY AND DESERVING CHILDREN CONTINUE TO RECEIVE HIGH SCHOOL EDUCATION SCHOLARSHIPS

Education is, no doubt, the great equaliser. When bright children from underprivileged backgrounds are supported to access education, they have a priceless opportunity to compete and achieve their dreams, their background notwithstanding. Unfortunately, this is not always the case. As a matter of fact, in Kenya, many bright students have had their hopes and dreams diminished, since their parents or guardians can't afford to pay for their education.

The KCDF Education and Scholarships programme supports bright and needy students access an education. With support from various partners such as Chandaria Foundation and Ford Foundation as well as individual partners, the programme has, in the last 7 years, supported 488 deserving students. These scholarships are administered through partners who have the ability to transparently manage bursary schemes. At any one time, there are about 100 students enrolled in the programme.

In 2007, Chandaria Foundation - the philanthropic wing of Comcraft Group of Companies that is associated with leading industrialist Dr. Manu Chandaria - signed a 3 year partnership with KCDF to fund its scholarship programme on a three year commitment. This programme was, in a substantial way, successful in enabling bright and needy students access an education. In 2010, the Foundation signed another 3 year funding programme, with a commitment of Kshs. 6.6 million, under phase 2 of the programme. This further boosted the KCDF Scholarships Programme.

"...target to bridge the ratio of girls to boys to **60:40..**"

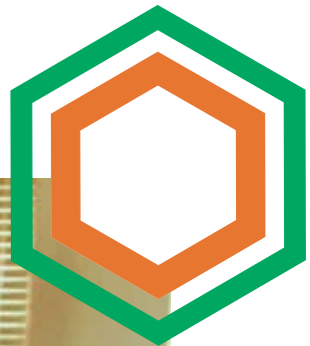


Dr. Manu Chandaria (third left) presents a cheque to Mrs. Janet Mawiyoo, CEO (third right) as part of the 3 year partnership with the education programme.

In the past year, KCDF gave out scholarships to 98 students. 50 of these were girls – accounting for 51 % of all the scholarships awarded. This was an improvement from last year's 47%. Our target, however, has been to ensure that the girls benefiting from this programme account for 60% of all the scholarships awarded. This is informed by the reality in Kenya: girls face more prohibitive factors such as Female Genital Mutilation, early marriages and the tendency of families to give preference to boys when a choice has to be made on who a family will educate.

In 2011, KCDF will continue in its corporate outreach to identify more partners to support this programme. We shall also target to bridge the ratio of girls to boys to 60:40 as well as target more students from the marginalised regions such as the Northern Frontier.

**Catherine Kiganjo**  
Programme Officer, Institutional Development and Governance





**Kshs. 8 Million**  
targeted at **13,000**  
households or  
**600,000** individuals

## Community Food Security (USTAWI Programme)

In the year under review, the Ustawi programme widened its reach and broadened its scope to support many more communities in various regions of the country, working with even more vulnerable communities in addressing issues of environment, water harvesting and food production. This period saw the programme support projects in various parts of Western, Central, Eastern and Rift Valley regions of Kenya. Apart from promoting drip irrigation and green house farming, KCDF supported communities in diversifying their food production activities including fish farming, poultry and bee keeping as well as environmental projects such as earth dams construction and rain water harvesting. The programme also supported community storage or cereal banking projects. This happened through kind support from the Safaricom Foundation, for the third year running.

Ustawi is designed to support farmers to grow food in sustainable ways including using the most advanced technologies available to them. The components of the programme are water harvesting, environmental conservation, irrigation and other means of growing food and promotion of community storage facilities.

There were two rounds of Ustawi grants in 2009-2010, which received 170 applications and 140 applications in the first and second rounds respectively. Of these, 67 applications were shortlisted and 31 grants of between Kshs. 250,000 and Kshs. 600,000 were approved and disbursed to the community organizations. The grants included 6 Amiran Farmers Kits, 15 Drip

Irrigation and the rest addressed cereals storage banking, fish farming, bee keeping, dairy and poultry farming.

In total, the funded community initiatives absorbed more than Kshs. 8 Million (US\$106,666) in grants, which targeted more than 13,000 households or more than 600,000 individuals. Through these projects and other existing interventions by government and other actors within those communities, it is estimated a potential 25% improvement in their food security.

The impact of the interventions has attracted interest from corporate and corporate foundations and discussions are ongoing to upscale the programme with even greater reach and impact on households during the next year. Our partnership with the Safaricom Foundation continues to grow from strength to greater strength. KCDF is targeting to reach 50 more community organizations in 2011 and will, in particular, be exploring the possibility of expanding this work by going into public - private sector partnerships.

**Tom Were**  
*Programmes Director*



# Girl Child Programme

## SUPPORTING GIRLS TO REALISE THEIR FULL POTENTIAL

There are many challenges facing the girl child in Kenya. These challenges include – female genital mutilation in some regions, discrimination, sexual harassment, early marriages among other inhibitive cultural practices. These challenges, when not addressed, hinder girls from realising their full potential.

In September 2006, KCDF established the Girl Child Fund to address in a sustainable way, the challenges facing the girl child. With some US\$22,000 received from the Friends of KCDF in the USA, KCDF was able to pilot some work in support of the girl child. Through a competitive approach, three special initiatives were selected which were aimed at empowering girls in three districts of Kenya over a period of one year. Highly encouraging outcomes were realised in these areas, as seen below:

Yang'at Girl Child Potential Sensitisation Group, an organisation based in West Pokot, was successful in creating awareness on the dangers of Female Genital Mutilation and early marriages among the Pokot community and also in establishing rescue centres for victims of these vices. This effort saw an increase of retention rate of girls in schools.

Hope for the Girl Child, Malindi, on the other hand, created awareness on the dangers of early marriages and prostitution in Malindi district and also provided sanitary towels to over 1,000 girls.

Child Welfare Society, Mombasa, imparted girls with skills such as hairdressing, dressmaking and driving. As a result of this effort,

Creating awareness on the dangers of early marriages and prostitution in Malindi district and also provided sanitary towels to over **1,000** girls.

these girls found decent and dignifying means of livelihoods in an area where commercial sex exploitation among girls is rampant.

At the same time, KCDF in collaboration with the Global Give Back Circle (GGBC), continued to increase the number of girls benefiting from a programme that seeks to empower and transition girls, by supporting them through a mentorship programme that helps them transition through the gap period (after high school and through tertiary colleges) to employment, and to become responsible and giving back citizens. Through an innovate and structured model that leverages resources of private sector organisations and individuals, GGBC and KCDF have been supporting the transition of post-secondary graduates, to college through to the society. This effort is, in a significant and practical way, advancing Kenya's realisation of the 3rd Millennium Development Goal: "to promote gender equality and empowerment of women."

In the past year, a total of 78 girls benefitted from this holistic process: scholarship, financial literacy and Information Technology skills and mentorship. As a result of this comprehensive transition process, the girls will be adequately prepared and imparted with requisite skills for the labour market or self employment as well

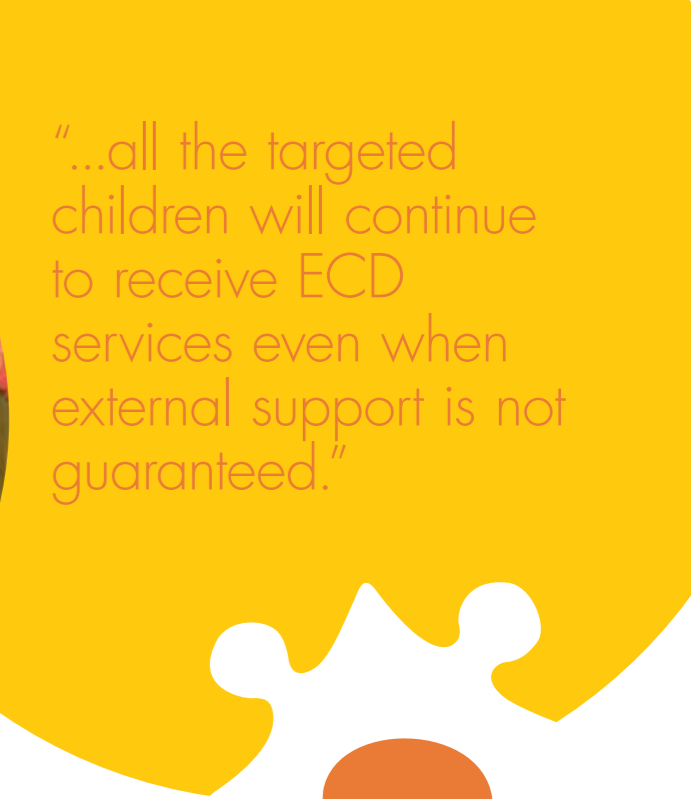
as leadership qualities. With these skills and inspiration by the dedicated mentors, these girls will realize their full potential and become mentors and supporters of the next generation of girls.

The past year also saw more partners commit to support the Circle. Private funders of this programme included: **ATEbank of Greece, Microsoft, Standard Chartered Bank, Equity Bank, Mastercard Foundation, Citigroup East Africa, Deloitte and Touche Kenya, KPMG Kenya, PWC Kenya, General Motors (East Africa) Ltd, Ernst & Young USA, Surgipharm Kenya, Shiraz Partners Netherlands, ABZ Netherlands, Dalton Foundation USA, Barclays Bank Kenya, KLM East Africa, Ecolab East Africa, Airtel Kenya, Safaricom Foundation Kenya, Njima Chemical Kenya, Serena Hotels Kenya.** As funding partners grew, individuals who support the Circle through mentorship also increased.

The local community partners that facilitate this Circle include: **Starehe Girls Centre (Nairobi), St. Martins Secondary School (Kibagare Slum) and Blessed Generation School (Ruiru).**

**Catherine Kiganjo**  
*Programme Officer*





## Early Childhood Development

### COMMUNITIES TAKE CHARGE IN ENSURING A SAFE AND SECURE ENVIRONMENT FOR THEIR CHILDREN

The environment that children grow in, the care and warmth that they get determine their overall wellbeing in the subsequent years in life – adulthood. This is the stage when the brain undergoes its most dynamic growth and development. The KCDF Early Childhood Development Programme (ECD) is grounded on supporting children during their critical growth years (0-8years). The programme, in a holistic way, supports communities to provide a safe and secure environment vital for their growth.

In the past year, KCDF supported communities in four selected marginal districts – Mwingi, Garissa, Malindi and Kilifi – to implement income generating activities (IGAs), which will ensure that all the targeted children will continue to receive ECD services even when external support is not guaranteed. 64% of all the ECD programme funds were directed to this effort.

Our partners implemented a range of activities such commercial farming, making and selling school uniforms and catering. Due to the investment that KCDF made in training these partners and also their governance structures, the IGAs have all been successful and are expected to continue doing well. Some of the partners are also growing endowment funds within KCDF structure in their efforts to promote sustainability of their programmes. KCDF is confident that even with the expiry of KCDF-Bernard Van Leer Foundation's 5 year programme on ECD in these areas, these communities will continue with their holistic child care programmes.

KCDF also invested in bolstering the capacity of the ECD programme partners. The communities benefited from training in areas such as sustainability and financial management. These training sessions were organised by KCDF staff who were, in several occasions, joined by external experts. As a result of this, 8 out of 9 communities expanded their IGAs and other sustainability

initiatives. Another effort geared towards enhancing the capacity and exposure of the communities was realised through the networking forums that KCDF organised for all the programme partners. Through this, partners were able to learn from the best practices and strategies employed by their peers.

In 2010, the ECD programme undertook a comprehensive documentation programme showcasing the impact realised in the communities, 5 years since its inception. Through this effort, a book and a documentary capturing the case studies and models of best practices, are expected to be developed therefore providing a reliable repository of tried and tested community-level strategies that ensure children grow in a safe and secure environment.

In 2011/2012, KCDF will continue to intensify and support IGAs in the four districts. The organisation will seek networking and partnerships opportunities with likeminded organisations both locally and internationally to leverage resources to ensure the wellbeing of children in Kenya.

#### Gladys Miriti

*Programme Officer, Early Childhood Development*





# Community Open

draws massive participation



Nation Media Group CEO teeing off

## COMMUNITIES ARE SUPPORTED TO GROW FOOD

Friday, 15th October 2010, turned out to be just the perfect day for golf. The sun generously bathed the lawns at Muthaiga Golf Club, taking away the crispy dew that had enveloped the course. The clear, bright sky ushered a memorable Community Open, KCDF's premier fundraising golf tournament that raises funds to support Kenyan communities to grow food.

At 8:00 am, the first team teed-off, setting the stage for a full day challenge for the 100 golfers who took part in the tournament. The sponsors were as many as the golfers were. Almost every vantage point bore testimony of a well sponsored event.

At 6:30pm, the golfers assembled at the club house for the awards ceremony. Here, they were officially welcomed by KCDF CEO, Janet Mawiyoo who, on this day, also registered a first: doing an 18-hole round of golf. "I thank all of you for supporting us today. Today was the first time I did a round of 18 holes as I am new in this game. I thank the golfers for encouraging me. The bigger story of this our participation in this event is that, we shall support more communities to grow food through modern reliable technologies," said Janet.

Muthaiga Club Chairman, Philip Kung'u – a member of the winning team in Community Open 2009 – then called out the winners. With 42 points was M Sumar, who was the Overall Individual Winner. He was closely followed by Ambassador Ben Kipkorir – the Runner Up - at 38 points and then Paul Ngugi, the Overall Third. The IQ Plus team comprising of M Sumar, D Saikwa, S Otieno and L Shani was the Team Winner. The overall lady winner was M Kariuki while the runner-up was R Wairumbi.

The Community Open 2011 will be held on Friday, 14th October 2011, two days before the world commemorates the World Food Day.

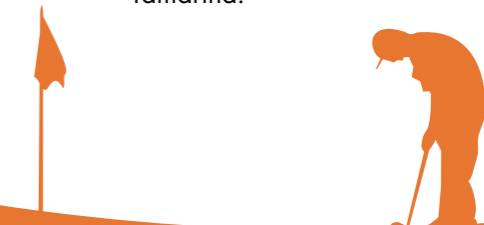
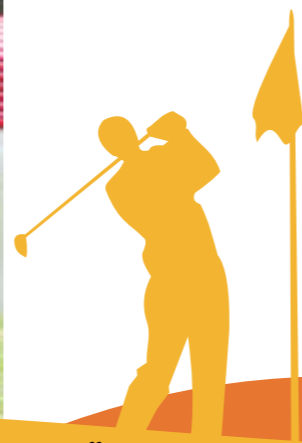


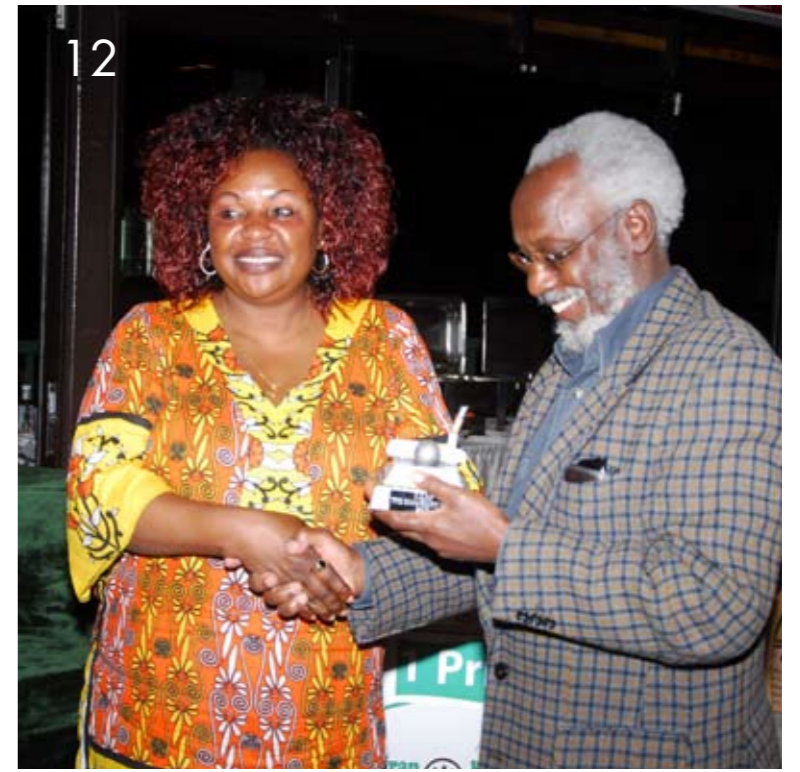
Safaricom Foundation Chairman, Les Baillie – a key note speaker during the event, hailed KCDF for the impact that the organisation has been delivering in the communities. "Safaricom Foundation has, in collaboration with KCDF, been supporting Kenyan farmers to grow food instead of relying on food relief. This partnership has yielded immense impact in the communities," observed Les.

Nation Media Group CEO Linus Gitahi, who was the other keynote speaker, noted that KCDF efforts of supporting farmers ought to be emulated to make Kenya a food secure country. "This country has enough resources that should be tapped to make Kenya a food sufficient country," said Linus.

Al Kags, KCDF Marketing and Partnerships Head captured the collective narrative of the tournament: "with your support, the Community Open, the only golf tournament held in Kenya to promote food security in the country, is growing in stature and raising money that is getting to the farthest corners of the country. We have more golfers and sponsors this year than any other year. We thank all of you for your support."

The Community Open 2010 was sponsored by: Main Sponsors: Safaricom Ltd and Nation Media Group. The co-sponsors included: Preferred Personnel, Amiran Kenya, Old Mutual, Commercial Bank of Africa, IQ Plus, Prime Bank, Octagon Securities, GlaxoSmithKline, Riara Schools, Gimco Ltd, Printfast, Nairobi Hospital, KPMG, Ketepa, Heritage Hotels, Airkenya, Safarilink, Travel Creations, Winemasters, Aromatic Spa and Tamarind.





1. The best lady golfer.
2. The ultimate trophy Community Open 2010.
3. Les Baillie tees off.
4. Michael Laxmi and Paula of Prime bank with KCDF CEO Janet Mawiyoo.
5. KCDF's Janet Mawiyoo in action.
6. Elated winners celebrate.
7. No. 1 golfer M. Sumar gives his victory speech.
8. Al Kags, KCDF Head of Marketing and Partnerships and MC of the day.
9. Kethi Kilonzo in action.
10. KCB team strategising.
11. KPMG's Robert Onyango giving one of the raffle prizes
12. First Runner Up winner, Amb. Ben Kipkorir receives his prize.



# AFRICAN PHILANTHROPY



## CHANGING THE AFRICAN NARRATIVE

First ever Conference for African grantmakers held in Nairobi

Every so often, when the narrative of Africa's development is told, reference is made to the negative: disasters, disease, poverty, among other ills. Yet there is a narrative of hope and written by Africans themselves that is rarely told. There has been enduring efforts by Africans to better their lives through philanthropy in such initiatives such as Ubuntu (humanity) and Harambee (working together), among others.

From 3rd to 5th of November 2010, in an effort to redefine the narrative, over 200 leading African grantmaking organisations, development workers and philanthropists convened at Panafric Hotel, Nairobi to deliberate on issues bedeviling the continent and also how, through philanthropy, Africans can and are addressing their own challenges.

Dubbed the 1st Pan-African Assembly of African Grantmakers, the conference was convened by the influential network of African donors – the African Grantmakers Network, AGN. Some of the key personalities who attended included: Bisi Adeleye-Fayemi, Executive Director, Africa Women's Development Fund, AWDF, Bhongi Mkhabela, CEO, Nelson Mandela Children's Fund, and Dr. Wiebe Boer, the CEO of The Tony Elumelu Foundation – the biggest foundation in Africa formed by one of Africa's most influential billionaires, Tony Elumelu and many others.

The participants took part in vibrant debates and panel discussions on pertinent topics such as: how to engage the African middle class, high net-worth families in philanthropy; the challenge of leadership and good governance in organisations, among others. The climax of the conference, however, was the "Great Debate" where an informed panel took part in a stimulating debate based on the motion: "African Grantmaking Organisations are no different from funding agencies in Europe."

One of the highlights of the conference was the launch of Wanjiru Kihoro Memorial Fund, a fund established in honour of the late Dr. Wanjiru Kihoro, who was a respected for advancing and promoting causes in areas such as gender, equality, justice and democracy in Kenya and indeed Africa.

Founded in 2009, AGN builds on the rich tradition of philanthropic giving in Africa. Hailed as a truly African institution, AGN was formed by grantmaking organisations that are rooted in Africa who out of their own felt the need for such a network.

Its founder member organisations include Kenya Community Development Foundation (KCDF), Kenya, Akiba Uhaki Foundation (AUF), Kenya, African Women Development Fund (AWDF), Ghana and Trust Africa (TA), Senegal.

All the founder members were actively involved in the organisation of the conference, under the stewardship of KCDF. Other members of the planning committee included: Southern Africa Trust; South Africa, East Africa Association of Grantmakers; East Africa, Foundation for Civil Society (FCS), Tanzania; Urgent Action Fund East Africa (UAC-EA), Kenya, and Community Foundation of Greater Rustenburg (CFGR), South Africa.

Read more about AGN on  
<http://www.africangrantmakersnetwork.org/>

"The participants took part in vibrant debates and panel discussions on pertinent topics..."



1. (First left) KCDF CEO Janet Mawiyoo and AGN's Chair/ Executive Director, Africa Women's Development Fund, AWDF Bisi Adeleye-Fayemi with The Tony Elumelu's CEO Dr. Wiebe Boer (2nd left) and Founder & Chair, Mr. Tony Elumelu.
2. Some of the participants chatting.
3. Mr. Wanyiri Kihoro speaks during the AGN dinner.
4. AWDF's Executive Director & AGN Chair Bisi Adeleye-Fayemi and KCDF CEO Janet Mawiyoo exchange Wanjiru Kihoro's Memorial Fund MOUs.
5. A participant shares his thoughts during plenary discussions.

6. PUMUA! The Homecoming performance.
7. Akiba Uhaki's Executive Director Ezra Mbogori moderating "The Big Debate."
8. This way! Dancers perform during PUMUA! The Homecoming.
9. The "Cut Off My Tongue" cast team in action.
10. An elated participant applauds.
11. The Kenya Red Cross Society's Secretary General Abbas Gullet addressing the participants.

## COMMUNITY ASSET BUILDING PROGRAMME

### POOLING RESOURCES FOR A SECURE FUTURE

Since 2002, KCDF has been supporting communities to build their own endowment funds, so that, out of the yield of their investments, they are able to sustainably address their various challenges. This is in line with the organisation's goal as stipulated in the strategic plan: to support communities in building local assets for their social development, employment and wealth creation.

At the start of the 2009-2010 financial year, the KCDF endowment was valued at US\$2.47 million, but as the economy recovered its value increased to US\$4.15 million. This was attributed to several factors such as capital gains derived from the investor's confidence as the economy grew and new injections of capital by the fund builders. In addition, two new organisations started building endowments with KCDF, therefore growing the number of fundbuilders from 20 to 22. This demonstrates further the communities' confidence on the endowment management.

As part of building the capacity of the fundbuilders, KCDF organised a learning and sharing on investment forum that was attended by all the fundbuilders. KCDF's fund manager, administrator and an invited guest speaker shared insights on how best to handle endowment funds. The forum also proved to be a valuable platform for fund builders to share experiences and challenges facing them such as fundraising within their communities, especially in fundraising in their community.

As part of building their endowment funds, fundbuilders demonstrated ingenuity in fundraising in the past year. Genesis Community Development Assistance, for instance, continued with its unique models of mobilising households to save a shilling per day to build the organisation's endowment. Over 3,000 households participated in this fundraising effort. KCDF will in the next financial year, continue encouraging and supporting such initiatives.

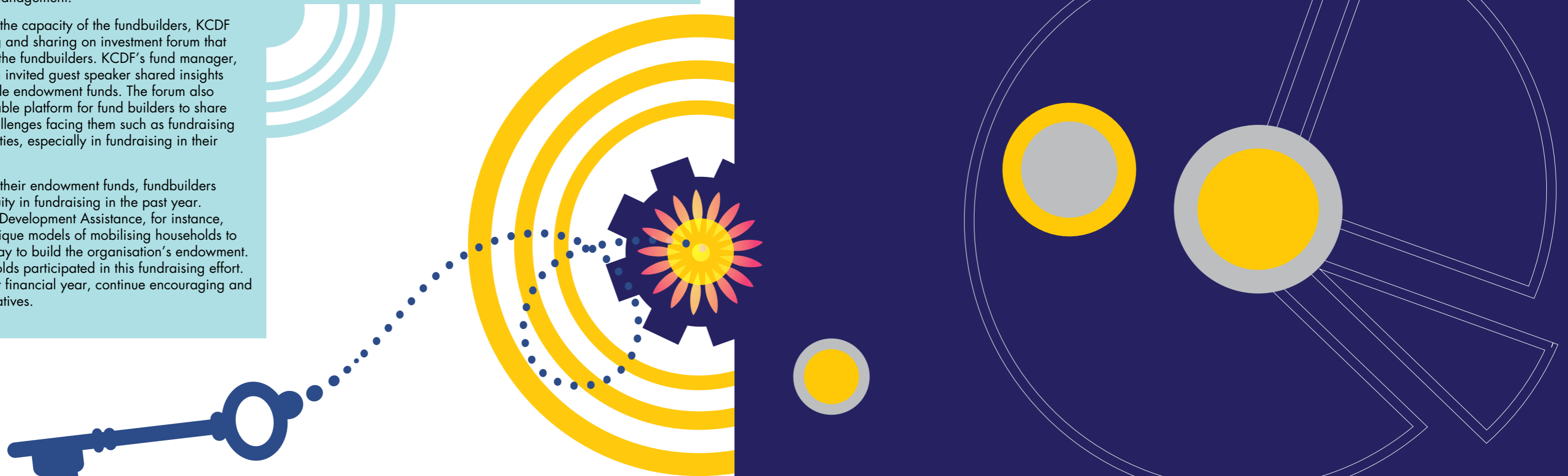
As part of its efforts of growing the endowment from US\$4million to US\$12million by year 2013 as stipulated in our strategic plan, KCDF will in the coming year bolster its fundraising initiatives as well as encourage more communities to grow funds to promote sustainability of their initiatives. The organisation will also continue organising capacity building forums for the fundbuilders as part of enhancing their exposure and understanding on the funds management.

We hope the encouraging trend in the economy following the boon in the traditional movers of the economy – tea, tourism, coffee and infrastructure development sector – will continue in the coming year, therefore boosting the endowment.

**Francis Kamau**

*Finance and Investment Manager*

# THE NUM3ERS



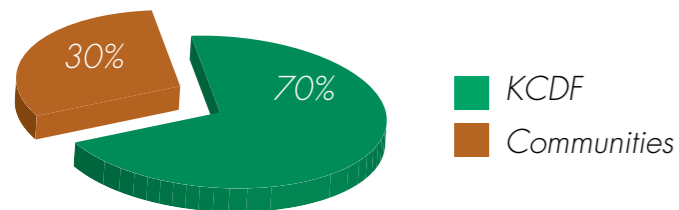
## COMMUNITY FUND DEVELOPERS

### TILL SEPTEMBER 2010

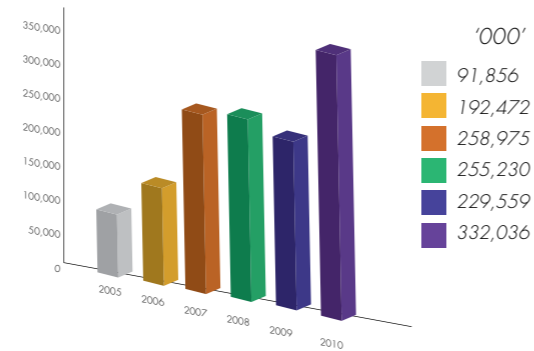
Hope Trust Fund  
 ACK Eldoret region CCS  
 Good Samaritan  
 South Imenti Development Association (SIDA)  
 Othaya Bursary Fund  
 Starehe Girls Centre Fund  
 Makutano Community Development Association  
 Omega Child Shelter Fund  
 Genesis Development Fund  
 Kenya Professional Association of Women in Agriculture and Environment (KIPEWAE)  
 Women Concern  
 Education and Medical Trust Fund  
 Ngolonya Community Aid Programme  
 Lake Region Development Association  
 Support Activities in Poverty Eradication and Health (SAIPEH)  
 Malindi Education Development Association  
 Yahya Family Fund  
 Dr. Julia Gitobu Education Fund  
 Kirima Education Support Project



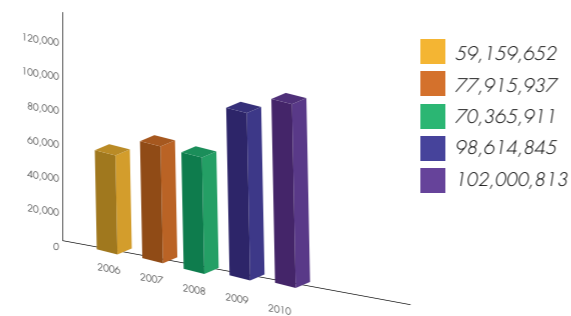
### KCDF versus Communities endowments



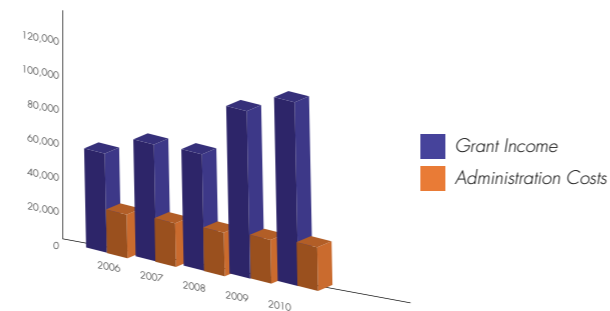
### Endowment Growth in the Last Five Years



### Grant Income growth



### Grant income versus expenditure



NB: Figures are in Kshs.

## FINANCIAL OVERVIEW YEAR 2009-2010

### Statement of Comprehensive Income for the year ended 30th September 2010

	2010 KSHS	2009 KSHS
<b>INCOME</b>		
Grant income	102, 000, 813	98,614,815
Endowment income	3, 328, 309	2,504,124
Donation in kind	134, 122	134, 122
Other income	48, 756	2, 612,032
<b>Total</b>	<b>105, 512,000</b>	<b>103, 856, 093</b>
Administrative expenses	14, 068, 318	13, 474, 677
Donor funds disbursed to partner organizations	41, 882, 296	37, 168, 401
Capacity building	39, 849, 726	38, 898, 226
Fund-raising and communication	4, 758, 238	4, 487, 230
Transfers to endowment	2, 615, 000	2, 490, 637
	103, 173, 578	96, 519, 171
Operating surplus	2, 338, 422	7, 345, 922
Finance income – net	3, 195, 443	2, 985, 632
<b>SURPLUS FOR THE YEAR</b>	<b>5, 533, 865</b>	<b>10, 331, 554</b>

## NOTES TO THE FINANCIAL STATEMENTS

### 1. SIGNIFICANT ACCOUNTING POLICIES

The principal accounting policies adopted in the preparation of these financial statements are set out below. These policies have been consistently applied to all years presented, unless otherwise stated.

#### 1.1 Basis of Preparation

The financial statements are prepared in compliance with the International Financial Reporting Standards under the historical cost convention.

The preparation of financial statements in conformity with International Financial Reporting Standards requires the use of estimates and assumptions. It also requires the Board to exercise its judgement in the process of applying the accounting policies adopted by the organisation. Although such estimates and assumptions are based on the Board of Directors, best knowledge of the information available, actual results may differ from those estimates.

#### 1.2 Revenue recognition

Grants received by the Kenya Community Development Foundation for specific (donor funds) projects and non-specific (general) project costs.

##### **Specific grants:**

Grants received for specific purposes are treated as unexpected grants payable and credited to the income and expenditure statement when the activities for which they were provided for have been undertaken.

Specific grants supported by signed funding agreements which have not been received, but costs have been incurred are recognised as grants receivable. The excess of expenditure over receipts are recognised as revenue and included in the financial statements as grants receivable.

##### **General grants:**

Non-specific grants are recognised as income when received

#### 1.3 Property and equipment

All categories of property and equipment are initially recorded at historical cost and thereafter stated at historical cost less accumulated depreciation and accumulated impairment losses.

Subsequent costs are included in the asset's carrying value only when it is probable that future economic benefits associated with the item will flow to the organisation and the cost of the item will flow to the organisation and the cost of the item can be measured reliably. Cost of repairs and maintenance is charged to the income and expenditure account in the year to which it relates.

Depreciation is calculated using the straight line basis to write down the cost of each asset to its residual value over its estimated useful life using the following annual rates.

<i>Motor Vehicles</i>	25%
<i>Computers</i>	33.33%
<i>Office furniture, fittings and equipment</i>	12.5%
<i>Buildings on short term leasehold land</i>	Period of Lease

Property and equipment are reviewed for impairment whenever events or change in circumstances indicate that the carrying amount may not be recoverable. An impairment loss is recognised for the amount by which the asset's carrying amount exceeds its recoverable amount. The recoverable amount is higher of an asset's fair value less costs to sell and value to use.

Gains and losses on disposal of property and equipment are determined by reference to their carrying amount and are taken into account in determining operating results.

#### 1.4 Investments in Unit trusts

Investments in unit trusts are held for trading and stated at fair value

#### 1.5 Endowment Funds

Endowment Funds comprise amounts set aside for permanent restricted community development initiatives. These are transferred to the KCDF trust, established for this purpose and invested in interest earning assets. The distribution of returns on investment is done on the principal amount invested and is done after the endowment fund is audited.

#### 1.6 Translation of foreign currencies

Translation of foreign currencies during the period are translated into Kenya Shillings at the rates ruling at the transaction dates. Assets and liabilities at the balance sheet date, which are expressed in foreign currencies, are translated into Kenya Shillings at the rates ruling at that date. The resulting differences are dealt with in the income statement in the year in which they arise.

#### 1.7 Deferred income

Assets donated as donations in kind are deferred and recognized as income over the expected lives of the respective assets.

#### 1.8 Leasehold land

Payments to acquire lease hold interests in land are treated as prepaid operating lease rentals and amortized over the period of the lease.

#### 1.9 Financial Instruments

A financial asset or liability is recognized when the company becomes party to the contractual provisions of the instrument.

##### **Held to maturity**

Held-to-maturity investments are non-derivative financial assets with fixed or determinable payments and fixed maturities that management has the positive intention and ability to hold to maturity. Where a sale occurs other than an insignificant amount of held-to-maturity assets, the entire category would be tainted and classified as unavailable for sale.

##### **Financial assets at fair value through profit or loss**

Financial assets acquired principally for the purpose of generating a profit from short-term fluctuations in price or dealer's margin are measured at their fair values.

##### **Available for sale financial assets**

Financial assets that are not (a) loans and receivables originated by trust, (b) held-to-maturity investments, or (c) financial assets held for trading are measured at their fair values.

#### **Bad and doubtful debts**

Specific provisions are made against grants and advances when in the opinion of management the company will not be able to collect all amounts due according to the original contractual terms of the grant advances. In addition, general provisions are maintained based on the management's evaluation of the portfolio and advances and other exposures in respect of losses, which although not specifically identified and known from experience to be present in any such portfolio.

When a grant is deemed uncollectable, it is written off against the related provision. Subsequent recoveries of amounts written off are credited to the income statement.

#### 1.10 Impairment of assets

At each balance sheet date, the company reviews the carrying amount of its financial assets, tangible and intangible assets to determine whether there is any indication that those assets have suffered an impairment loss. If any such indications exist, the asset's recoverable amount is estimated and an impairment loss is recognized in the income statement whenever the carrying amount of the asset exceeds its recoverable amount.

#### 1.11 Intangible assets

Generally, costs associated with developing or acquiring computer software programmes are recognized as expenses as they are incurred. However, cost that is clearly associated with an identifiable and unique product which will be controlled by the company and has a probable benefit exceeding the cost beyond one year, are recognized as an intangible asset.

Expenditure which enhances and extends the benefits of computer software programmes beyond their original specifications and lives is recognized as a capital improvement and added to the original cost of the software. Computer software development costs recognized as assets are amortized using the straight line method over their useful lives at a rate of 33.3%

#### 1.12 Taxation

The company is exempted from taxation.

## KCDF GRANTEES

October 1st 2009 to  
September 30th 2010

Nb: Exchange Rate: Kshs. 75 To 1US\$

### EDUCATION SCHOLARSHIPS PROGRAMME

The KCDF Education and Scholarships programme supports bright and needy students access an education. This programme's target is to ensure that 60% of scholarships awarded go to girls. This is informed by the reality in Kenya: girls face more challenges that hinder their realisation of full potential, such as Female Genital Mutilation (FGM), early marriages and the tendency of families to give preference to boys when a choice has to be made on who a family will educate.

With support from various partners such as Chandaria Foundation and Ford Foundation as well as individual partners, the programme has, in the last 7 years, supported 488 deserving students. These scholarships are administered through organisations that have ability to transparently manage bursary schemes. At any one time, there about 100 students enrolled in the programme.

### CHANDARIA FOUNDATION

In 2007, Chandaria Foundation signed a 3 year partnership with KCDF to fund its scholarship programme on a three year commitment. This programme was, in a substantial way, successful in enabling bright and needy students access an education. In 2010, the Foundation signed another 3 year funding programme, with a commitment of Kshs. 6.6 million, under phase 2 of the programme. This further boosted the KCDF

Scholarships Programme.

The following is a summary of beneficiaries. Each student received a partial grant of Kshs. 12,000 per annum as a contribution to the secondary school fees. The grants summary is as follows:

Total Funds Disbursed: Kshs. 1,662,500.

Total Number of Boys: 48

Total Number of Girls: 47

Total Number of students: 95

#### COMMUNITY PARTNERS:

##### KENYA NETWORK OF WOMEN WITH AIDS (KENWA) – NAIROBI

Male (0), Female (4)

##### KENYA PROFESSIONAL ASSOCIATION OF WOMEN IN AGRICULTURE AND ENVIRONMENT (KEPAWAE) – COVERAGE NATIONWIDE

Male (0), Female (4)

##### EDUMED TRUST – COVERAGE NATIONWIDE

Male (7), Female (4)

##### GENESIS COMMUNITY DEVELOPMENT ASSISTANCE – MWINGI

Male (2), Female (2)

##### GOOD SAMARITAN CHILDREN'S HOME – NAIROBI SLUMS

Male (3), Female (1)

##### SUPPORT ACTIVITIES IN POVERTY ERADICATION AND HEALTH (SAIPEH) – MUMIAS

Male (2), Female (2)

##### ST MARTINS GIRLS SECONDARY SCHOOL – NAIROBI, KIBAGARE SLUMS

Male (0), Female (4)

##### MAKUTANO COMMUNITY DEVELOPMENT ASSOCIATION (MCDA) – YATTA

Male (2), Female (2)

##### LAKE REGION COMMUNITY DEVELOPMENT PROGRAMME – SIIAYA

Male (2), Female (2)

##### TURKANA BASIN INSTITUTE LIMITED - TURKANA

Male (1), Female (1)

##### RATTANSI EDUCATION TRUST – NAIROBI

Male (2), Female (2)

##### STREETNIZERS MINISTRY TRANSFORMATION CENTRE – KIAMBU

Male (2), Female (0)

##### MALINDI EDUCATION DEVELOPMENT ASSOCIATION (MEDA)- MALINDI

Male (2), Female (2)

##### YANGAT GIRL CHILD POTENTIAL SENSITIZATION GROUP – WEST POKOT

Male (1), Female (4)

##### DRYLANDS COMMUNITY SERVICES – MARSABIT

Male (3), Female (0)

##### TUNYAI CHILDREN'S CENTRE -

Male (2), Female (2)

##### KESHO – KILIFI

Male (2), Female (2)

##### DHAMIRA MOJA YOUTH GROUP

Male (1), Female (2)

**Total Funds Disbursed: Kshs. 1,662,500.**

**Total Number of Boys: 48**

**Total Number of Girls: 47**

**Total Number of students: 95**

## YOUTH DEVELOPMENT PROGRAMME

The grants under the Youth Development Programme aim to strengthen the inclusion, participation and empowerment of young Kenyans at the community-level and national development processes. Funded by the Japanese Social Development Fund(JSDF) through the World Bank, Kenya office, this programme addresses, in a holistic way, the well-being of youth in areas such as life skills, economic self reliance, recreation, HIV/AIDS, leadership development, social accountability among others.

### CENTRAL PROVINCE

#### NJORO VISION YOUTH GROUP

Based in Njoro town, Njoro Vision Youth Group is a youth serving organisation registered in 2006. The organization's mission is "to engage and involve the youth in environmental conservation and create sustainable livelihoods among its members. Njoro Vision Youth Group is implementing a 12 month solid waste management project that targets 500 youth in and out of school.

The project aim is to economically empower the youth in Njoro district and involve them in environmental conservation. The core project activities include: facilitating a capacity building workshop, facilitating a Training of Trainers (TOT) skills building workshop on enterprise development, solid waste management and business planning, compost manure, marketing and community sensitisation on environmental conservation as well as monitoring and evaluation. It is expected that at the end of the project there will be an improvement in the livelihoods of each project participant as well as their dependents and an improvement of sanitation standards in Njoro town.

**Grant amount: Kshs. 709,080**

## SHABAA CENTRAL

The group, which is hosted by Kijabe Environmental Volunteers (KENVO), is an initiative of the KCDF 2009 Leadership Programme. The group is implementing a 6 months Youth Leaders in Environment Conservation and Community Empowerment project that aims at increasing the participation of youth in environmental conservation efforts in Central province.

The core project activities include: facilitating training on leadership, conflict resolution and communication skills, participation in the global youth service day expedition camp in order to plant trees and organise for VCT services, training on waste management as an entrepreneurship opportunity and organising an environmental conservation rally.

It is expected that the project will demonstrate that the youth are concerned about and are proactive in addressing challenges facing the country such as environment.

**Grant amount: Kshs 1,386,020**

### WESTERN PROVINCE

#### USANII FORUM FOR DEVELOPMENT

Registered in 2007 as a CBO, Usanii Forum for Development is a youth serving organisation based in Bungoma Town. Its mission is to "to enable a healthy community realise wealth creation strategies and initiatives through training, advocacy, lobbying, and exchange and mentorship programmes." The group is implementing a 12 month project dubbed "Vijana Pamoja" that seeks to provide a supportive environment that will empower and create sustainable employment for 125 young artists from Bungoma town.

The core project activities include: conducting an organizational capacity

building workshop, facilitating training on business planning for artists, talent promotion and development for artists, hosting events for artists and monitoring and evaluation. It is anticipated that at the end of the project the group will have developed marketing strategies for the artists and the organization, and enable young artists to earn income from their talents.

**Grant amount: Kshs 886,600**



### EMUKABA YOUTH AIDS CONTROL GROUP

The group, based in Kakamega district is a youth serving organisation registered in 2002 as a CBO. The major mission of the group is to empower the youth to participate in community development by training them in life skills so as to be self reliant and responsible.

The group is implementing a 12 month youth economic empowerment through life skills project. The core project activities supported by the grant include conducting an institutional capacity building workshop (to build its structures and governance), training on theatre, community outreaches on peace building, HIV/AIDS prevention and designation and good governance as well as a Trainer of Trainers sessions on business development, planning and marketing.

At the end of the project, the group expects that there will be enhanced cohesion, peace and harmony among different ethnic communities, youth to youth education for self understanding and problem solving; and that the youth will be more sensitised in HIV/AIDS prevention measures and aware of their HIV status. It will support youth affected by HIV/AIDS to live positively as well as venture into income generating activities.

**Grant Amount: Kshs 1, 022,500**

### VIHIGA VISION CATCHERS

Based in Chavakali location, Vihiga district, Vihiga Vision Catchers is a youth serving organisation registered in 2009 as a self help group. The group's mission is to empower youths to get involved in activities that will help alleviate poverty, participate in leadership so that they can become accountable and self reliant at present and in the future.

The group is currently implementing a 12 month youth energy and environmental conservation programme that aims to encourage the youth to establish environmentally friendly income generating activities to improve their quality of life. The project targets to reach at least 30 youth.

Their supported activities include: facilitating an organisational capacity building workshop (to improve their structures and governance), financial management training, training on entrepreneurship, fundraising and environmental conservation, scaling up income generating activities that the group is already involved in such as sale of fireless cookers, baskets, pillows and cushions.

The key outcomes include: At least 25 youth will benefit from organisational capacity assessment and building workshop and project planning meeting, training in group dynamics and project planning. 4 members of the group will be trained in financial management and business planning while 35 youth will be trained in entrepreneurial skills, fundraising and conservation.

**Grant Amount: Kshs. 1,146,250**



### BROTHERS SELF HELP GROUP

Based in Mumias, the group is a youth serving organisation registered in 2005 as a self-help group. The group's mission is to exploit natural resources in a sustainable way to improve the livelihoods of young people. The group is implementing an integrated amaranth production and processing plant project which aims to increase income to young people, promote food security and manufacture natural value added flour.

Some of the project activities supported by the grant include conducting an institutional capacity building workshop (to improve its structures and governance), conduct a Trainer of Trainers (TOT) on business development, planning and marketing, establishing demonstration sites, exchange learning visits, and outreaches and recruitment of young farmers. It is expected that at the end of the project there will be an increase in the number of youth involved in agribusiness, community awareness about the value of amaranth plant and improved livelihoods of young people. At least 500 youth will benefit from the project.

**Grant Amount: Kshs 873, 000**



### ACK WESTERN REGION CHRISTIAN COMMUNITY SERVICES

Registered in January 1997, the group is a limited company by guarantee based in Western Province.

The group's mission is to reach and empower physically and spiritually marginalized communities in Western Kenya in order to improve their livelihoods.

The group is implementing a 12 month capacity building and training services for youth groups in western Province. The core project activities supported by the grant include capacity enhancement of youth groups, planning, monitoring and evaluation.

The group hopes to harmonise the activities and strategies of the six target groups and improve the levels of their group management resulting in growth of the group enterprises and an increase in income levels for the groups and individual youth.

**Grant Amount: Kshs 2,011,100**



### NAIROBI PROVINCE

#### WESTLANDS ARISING GENERATION

The group, based in Westlands, Nairobi is a youth serving organisation registered in 2009 as a CBO. The organisation mission is to "network youth groups in Westlands district, provide a platform for tackling challenges and also link the youth groups to opportunities, partners, and information for economic and social empowerment. The group is implementing a 12 month project dubbed Taka ni pato (gabbage is money) that aims at conserving the environment and creating employment for youth.

Supported activities include: facilitating a capacity building workshop for the organisation to strengthen its operations and structures, training the youth on business planning, conducting a training targeting Trainers of Trainers (TOT) on solid waste management and hosting a resource mobilisation training workshop, scaling up its eco-enterprise development project on energy saving products, community sensitisation on the environment and marketing of energy saving products as well as monitoring and evaluation.

The project aims to reach 250 young people with 52,540 household directly benefiting from the project. The grant will enable the group to improve its institutional capacity and structures, improve its technology based-production processes resulting in better quality and mass production of its recycled waste products and increase the income

levels of the project participants and their dependents.

**Grant Amount: Kshs 937,000**

#### IMMANUEL DEAF YOUTH GROUP

Immanuel Deaf Youth Group- is an organisation serving the hearing impaired youth in Nairobi North. The organisation was established in 2004 and legally registered in 2006 by a group of hearing impaired youths to amplify the voices of the hearing impaired by promoting their participation in development and civic processes, supporting them to establish income generating projects, among others.

Currently, the organisation develops youth-friendly signs for religious materials. The members are involved in a role model project in over 15 schools for the hearing impaired. The organisation also conducts youth friendly gospel outreach among the hearing impaired youth in urban and rural areas. The group also preaches to hearing congregations through sign language.

With support from KCDF, the organisation is implementing the following activities: conducting institutional capacity building - improve its structures, governance, financial management and project management. The Group is also expected to expand its networks and membership and become a national organisation offering support to hearing impaired youth. At least 50 hearing impaired youth involved in small enterprises will be mentored in areas such as business management, entrepreneurship and receive some financing support to grow the enterprise.

**Grant Amount: Kshs 852,500**

### NYANZA PROVINCE

#### SIALA KADUOL YOUTH GROUP

Based in Awour Mission town, South Gem district, Siala Kaduol Youth Group is a youth serving organisation registered as a CBO in 2000. The group's mission is to "increase food security, promote environmental conservation, behavioural change and income generating activities among the youth."

The group is implementing a 12 month agribusiness project. Specifically, it is engaged in beekeeping and vegetable production with the aim of improving income levels of 30 young people in Siala Village.

The core project activities include: training the youth in business management, bee keeping and vegetable farming, establishment of apiary and vegetable farms, purchasing of a honey extractor and harvesting kits, selling and marketing of honey products and vegetables and monitoring and evaluation. The grant will enable the group increase production of vegetables and honey, promote modern farming methods within the community and improve the livelihoods of the each project participants and their dependents.

**Grant Amount: Kshs 713,200**



#### KISUMU DISABLED SELF HELP GROUP

Registered as a CBO in 2003, Kisumu Disabled Self Help Group is an organisation serving youth living with disabilities in Kisumu district.

Its mission is to engage in activities that promote dignity and welfare of young people with physical disability by supporting them to initiate income generating activities. When economically empowered, youth with disabilities, therefore, actively and meaningfully participate in developing their communities.

The group is implementing a 12 month project that aims to build capacity of the disabled youth to participate in self employment (entrepreneurship).

The supported activities include facilitating a capacity building workshop and a district consultation forum on economic empowerment of persons with disabilities, business planning development, establishment of a mentoring programme targeting youth with disabilities, supporting them with seed capital to start enterprises as well as monitoring and evaluation. The group aims to target 30 youth with disabilities. It is anticipated that by the end of the project, youth with disabilities will be self reliant persons able to participate meaningfully in building their communities – a development that will make them to be accorded respect and appreciation.

**Grant amount: Kshs 1,099,200**



## RIFT VALLEY PROVINCE

### ONYX PLAYERS YOUTH GROUP

Based in Gilgil Town, the group is a youth serving organization registered in 2003. The group mission is to nurture and empower young people economically, raise community awareness on HIV/AIDS and empower the youth by disseminating information on art, education, sports, health and employment. The group is implementing a 12 month project dubbed “building our nation, shaping our communities, youth in development” that aims to empower the youth by developing comprehensive information, education and communication programmes based on art to improve the understanding of HIV/AIDS, drugs and substance abuse within Gilgil town. This project is expected to reach 1,000 pupils in 10 schools, 300 young people out of school in 3 remote, rural locations and 30 young entrepreneurs in Gilgil town.

The supported activities include: facilitating a capacity building workshop, hosting a stakeholders meeting, community sensitization on HIV/AIDS and entrepreneurship management, and conducting entrepreneurship sessions targeting school youth in primary and secondary schools. The project aims to reach 5000 youth in school and 5000 youth out of school. Through the project, it is expected that there will be an improvement in Onyx’s organisational structures, the community members will open up more to speak about HIV/AIDS, there will be a change in attitudes and behaviour of young people towards sexuality and young people will venture into entrepreneurship.

**Grant amount: Kshs 1,150,150**



### BARPELLO WOMEN GROUP

The group, based in East Pokot district, is a youth serving organisation registered as a CBO in 2009. Barpello Women Group aims at reducing female genital mutilation (FGM) among young Pokot girls through anti FGM campaigns in addition to supporting young women to venture into honey production. The group is implementing a 12 months project aimed at creating awareness on the dangers of FGM among the Pokot community as well as supporting the girls to venture into income generating activities, therefore reducing early marriages, as young women become self reliant.

The core project activities include training on business plan development, community awareness on FGM, establishment of a beekeeping enterprise and facilitating monitoring and evaluation. The project aims to target young women aged between 20 to 35 years. The groups expects that after the project there will be fewer cases of early marriages, Sexually Transmitted Infections (STI) and FGM.

**Grant amount: Kshs 970,750**



### TRANS NZOIA SPORTS ASSOCIATION (TYSA)

Trans Nzoia Sports Association (TYSA) was established in 2001 and is registered as a Community Based Organization (CBO). TYSA mission is to inspire and empower youth through sports. Its current activities include: capacity assessment and consultation sessions, Training youth in computer proficiency and basic entrepreneurship skills at the community resource centre, business planning and development and provision of basic services to the community.

TYSA is implementing a 12 month project ‘Tunaweza Girls project’ that aims to enhance girls’ active participation and control of their growth and development through sports(especially football) and equipping them with relevant skills, knowledge and information such as Information Communication Technology(ICT) skills, so as to make informed choices.

The key expected outcomes include: establishing a computer training centre, bolstering the sports programme and exchange visits, equipping youth with basic ICT skills that makes them competitive in the local job market, clear business strategies, revenue generated for the sustainability of TYSA as an organisation, bolstered capacity of youth to contribute to economic development and TYSA to generate increased income.

**Grant amount: Kshs 1, 366,800**

## COAST PROVINCE

### MOMBASA WEST PEER EDUCATORS

Based in Changamwe district, the group is a youth serving organisation registered in 2007 as a Faith Based Organisation working under the umbrella of Seventh Day Adventist Church. The group works to reduce the spread of HIV/AIDS, reduce drugs and substance abuse, stigma and discrimination. The organisation is implementing a 12 month project dubbed “Pap-Vijana Tuinuke” that aims to strengthen the inclusion, participation and empowerment of youth in Changamwe district through sustainable socioeconomic development activities.

The core activities include facilitating an organisational capacity building workshop, business planning development, giving seed capital to the youth (to start enterprises) and monitoring and evaluation. The group targets to reach at least 30 young people directly, aged between 18 to 35 years. The grant will enable the group improve its operations, create employment for the youth through the event management enterprise and therefore increase the income level of its members and the group.

**Grant amount: Kshs 729,000**



### BARANI JAMII YOUTH GROUP

Barani Jamii Self Help Group is a youth group under the banner of an umbrella organization for the hearing impaired in Malandi Town. Barani Jamii SHG noted the need to focus on the hearing impaired youth within the hearing impaired community in Malindi and thus registered in 2010. The Group aims to economically empower 200 deaf youth in Barani through vocational skills training & awareness creation for social & economic independence.

With funding from KCDF, the Group will implement a 12 month project to mentor as

apprentices 30 hearing impaired youth on welding & tailoring project. The beneficiaries youth will also receive training on business management and self reliance. In addition, Barani Jamii will conduct outreach and awareness campaigns on HIV/AIDS spread and prevention targeting the deaf community in Malindi town. The Group will also build the institutional capacity following the capacity assessment workshop and seek expert support for capacity building in financial management, leadership and group management. This initial project is anticipated to generate income that enables the Group support more young people.

**Grant amount: Kshs 850,150**



## NORTHERN REGION

### MALKA BISANADI CULTURAL VILLAGE COMMUNITY BASED ORGANISATION

The group based in Garbatulla district, is a youth serving organization registered as a CBO in 2004.

Its mission is to uplift the living standards of its members through horticulture, eco-tourism and cultural tourism. It is mainly involved in conserving the Boran culture while at the same time urging the young people to conform to modern progressive practices.

The group is implementing a 12 month project aimed at building the capacity of organisation to strengthen its structures and governance), imparting the youth from Kinna, Galbatulla with skills so that they can run the Malka Bisanadi Cultural Village – located on the Northern side of Meru National Park.

The project activities include: facilitating a capacity building workshop for the organisation members, sensitising the community about eco-tourism and conservation, training young people in marketing, customer care, entrepreneurship, hospitality so that they can run the eco-

tourism centre themselves as well as conducting exchange visits to organisations managing eco-enterprises.

It is expected that the project will enable the youth groups to establish enterprises such as farming and eco-tourism and thus, improve their livelihoods.

**Grant amount: Kshs 1,322,500**



### KINETAT CIVIC EDUCATION SELF HELP GROUP

The group registered as a Self Help Group in 2005 is a youth serving organization based in West Pokot. The group is implementing a 12 month project that aims to improve the livelihoods of Pokot and Sengwer Youths through skills transfer in entrepreneurship, agribusiness, environmental conservation and bee-keeping.

Some of the core project activities include conducting an institutional capacity building workshop, training on entrepreneurship, agribusiness, up scaling the beekeeping enterprise and Monitoring and evaluation.

The project aims to reach 200 youth of which 50 % are young women. It is expected that at the end of the project there will be better organized youth groups, better managed small scale businesses run by pokot youth and sustainability of the group activities.

**Grant amount: Kshs 1,105,700**



### SHABAA RIFT VALLEY INITIATIVE

Shabaa Rift Valley, which is hosted by TEARS Group Kenya, is a youth development initiative of the KCDF Youth Development Programme. Young people associated with TEARS Group have benefited from the initiative and played a key role in ensuring its continued implementation. The group is implementing a 6 months project dubbed “Vijana Twaweza, Mau Go Green.”

The core project activities include conducting public awareness campaigns on conservation and other issues in their communities (barazas) and forums to deliberate on issues facing them (political cafes), training on environmental conservation and enterprise development. It is expected that at the end of the project 180 youth will be enlightened on value based leadership and conservation efforts, participate in the re-forestation of Kenyan some of the Kenyan water towers(Mau Forest, Mt. Elgon and Cherangani. It is also expected that they will enhance their knowledge and skills on entrepreneurship therefore increasing their income levels.

**Grant Amount: Kshs 1,396,800**



### NIGATENI COMMUNITY BASED ORGANIZATION

The group based in Tana North, is a youth serving organisation registered in 2005 as a CBO .Its mission is to reduce poverty and create wealth among the Wailwana Community by supporting income generating activities targeting the youth. The group is implementing a 12 month project at promoting bee keeping, transfer of skills for business management and entrepreneurship project.

The core project activities include conducting an organisation capacity building workshop to build its structures and governance and also conduct similar other workshops for 10 other youth groups within Wailwana community, facilitating an entrepreneurship training, and conducting market research on honey products and training on agri-business.

It is expected that at the end of the project at least 60 will venture into income generating activities and, therefore, improve their livelihoods. It is also expected that there will be better organised youth groups in Madogo,

Nanighi and Chewele locations, within Tana North district.

**Grant Amount: Kshs 1,189,750**



### NYANDARUA CENTRAL YOUTH EMPOWERMENT INITIATIVE

The group, registered as a CBO in 2007, is a youth serving organisation based in Nyandarua Central District. The group supports youth empowerment efforts mainly through poultry keeping, bee keeping and tree nursery farming.

The group is implementing a 12 month project that aims to impart youth with skills in rabbit and poultry rearing to 120 youth in Nyandarua Central district for income and employment creation within one year.

The activities supported include conducting an organisation capacity building workshop( to improve its structures and governance) establishment of poultry and rabbit farming sites, selection and recruitment of 120 youth who will , training of 120 youth on rabbit and poultry production and entrepreneurship skills, and promotion and sale of rabbit and poultry products.

The group anticipates that the project will contribute in promoting food security(alternative eating habits) in Nyandarua district, and establish modern commercial rabbit and poultry farming therefore giving young people a source of income.

**Grant Amount: Kshs 1,086,500**



### EARLY CHILDHOOD DEVELOPMENT PROGRAMME GRANTEES - 2009/2010

*Goal/ Purpose of 2009/2010 fiscal year ECD Grants:*

*The 2009/2010 grants were directed towards supporting communities(grantees) to establish Income Generation Activities (IGAs) that will enhance the sustainability of their ECD initiatives so that they continue providing the same services to targeted children beyond external donors' support.*

*Since its inception, KCDF has ensured that sustainability of supported initiatives is incorporated as an integral part of grant making process. In the past one year, KCDF has made deliberate efforts to make this possible by providing both technical support (training and exposure) and grants to ECD grantees initiatives. The organisation has gone further to engage external resource persons with expertise in business management and entrepreneurship to provide technical support to partners through mentorship.*

*These efforts are expected to contribute to the improvement of the situation and environment where children in Kenya grow into: ensuring their availability of quality services for increased enrolments, retention and completion of both ECD and primary school educational programmes.*

*In the past year, a total of Kshs. 10,944,410 was approved and disbursed to 9 grantees in four supported districts.*

*ECD Programme Grantees Progress summaries:*

### MALINDI EDUCATION DEVELOPMENT ASSOCIATION (MEDA), MALINDI

MEDA is the most active member of Star of Hope – a network of organisations serving children and various community groups in Malindi district. The organisation was

formed to uplift the level of formal education of children through promotion of education awareness forums in the district so that they (children) acquire good foundation, early enough.

The organisation utilised grants received from KCDF in the year 2009/2010 to bolster or scale up its Income Generating Activities (IGAs) as part of efforts to promote the sustainability of ECD Programme in Malindi Urban, Marafa and Magarini divisions of Malindi district. Some of IGAs projects being implemented by the organisation include: making and selling of school uniforms and production and marketing of ECD learning, play and teaching materials from locally available resources.

The organisation also runs a commercial beach playground for children, letting out of furniture and related equipment for community events and providing catering services, running vocational development courses for school leavers in the community including computer skills training and carrying out welding services. MEDA also continues to coordinate ECD/Child Rights network's activities in Malindi and Kilifi districts and monitoring and supervision of ECD work. Due to changes in its funding strategy, MEDA has reduced the number of targeted centres and is now reaching out to 92 ECD centres where 5,980 children from 1,052 households are directly benefiting from ECD services.

Expected Results: It is expected that the organisation will be able to sustainably continue providing ECD services to children in Malindi and Kilifi districts, even without donor support.

**Grants Amount: Kshs 1,400,000**



### OMEGA CHILD SHELTER (OCS), MWINGI

Omega is a registered CBO based in Nzeluni Market, Central division, Mwingi district. Omega utilised the ECD grants to initiate as well as bolster or scale up more Income Generating Activities (IGAs) in Migwani and Mwingi Central divisions of the larger Mwingi district. Some of the key IGA and related programme activities implemented include: managing a cereals store, operating a medical laboratory which also serves needy children, running commercial fruit and tree nurseries and a commercial green house. The organization has also assisted the community equip two model ECD centres and supported supplementary feeding for children in identified large 6 ECD centres, organised a resource mobilization training for community groups and ECD committees.

As part of documentation, OCS has shared its impact through its website and annual newsletter. It has also set up demonstration plots to educate the community on strategies of promoting and ensuring food security. The organisation also coordinates ECD/ Child rights network's activities in the larger Mwingi district.

Omega is currently supporting 35 ECD centres that are directly serving 2,230 children from 1,826 households.

Expected Results: It is expected that the organisation will continue to provide ECD services in Mwingi district, even without donor support. Having adopted modern technologies such as greenhouse farming to grow food, it is expected that the organisation will promote food availability, therefore ensuring that children in Mwingi district – a food insecure region in Kenya – are well fed.

**Grant Amount: Kshs 1,392,880**



### APPROPRIATE SUSTAINABLE PASTORALIST EMPOWERMENT FOR COMMUNITY TRANSFORMATION (ASPECT) PROJECT GARISSA/LAGDERA

ASPECT is a registered CBO and the only organisation supporting development initiatives for non-refugee communities in Lagdera district – a district that was hived from the larger Garissa district.

The organization's offices are located at Daadab Market. The organisation utilised the grant from KCDF to initiate and scale up of Income Generation Activities in the area, therefore promoting the sustainability of its ECD Services. Key activities supported include: bee-keeping, running a cyber café, supporting the roofing and equipment of 2 model ECD centres. ASPECT plans to carry out honey value addition and marketing in their next year's plans.

ASPECT is also active in divisional ECD and Child Rights Network and related community development initiatives in Lagdera district. The organisation is currently supporting 16 ECD centres where 984 children from 752 households are directly benefiting from various ECD services.

Expected Results: Revenue from the income generating projects will support ASPECT's ECD work in a sustainable way.

**Grant Amount: Kshs 1,033,000**



### WOMAN KIND KENYA (WOKIKE), GARISSA

Wokike is registered as a NGO and serves communities in Garissa and Ijara districts but most of its ECD work is concentrated in Central Division of Garissa District. Wokike implements ECD programme as a key component of her Basic Education Programme. Wokike has been in the forefront

in advocating for the rights of the girl child and women empowerment in Garissa and other districts in the North Eastern Province.

Most of the grants received during the fiscal year 2009/2010 went to support the initiation of Income Generation Activities for the organisation. Besides the IGAs, WOKIKE continued with the implementation of routine ECD Programme activities such as supporting ECD centres teachers and ensuring that play materials were available at these centres. The organisation continues to promote the integration of ECD Programme with Islamic religious systems. This ensures that it reduces the number of years that children take before joining standard one. WOKIKE is currently supporting 12 ECD centres where 728 children from 427 households are directly benefiting from ECD services.

Expected Results: WOKIKE is expected to continue implementing its ECD programmes in a sustainable way from revenue generated from its income generating projects.

**Grant Amount: Kshs 820,000**

#### FORUM FOR ORPHANS- MALINDI (FOM)

FOM is a network of community based organisations and self-help groups implementing child focused projects and working to alleviate the effects of HIV/AIDS in Malindi rural, Marafa and Lanagobaya divisions of Malindi district.

Forum of Orphans received a grant from KCDF to initiate and scale up income generating activities and therefore be able to undertake ECD programmes in a sustainable way (even when donor support is not guaranteed). Some of the specific activities undertaken include: expansion of fruit and tree nurseries project for commercial purposes, setting up of community demonstration plot

complete with a greenhouse to educate the community innovative ways of growing food. The organisation is scaling up its bee-keeping project and also undertaking commercial farming and commercial water kiosks. Another innovative project that the organisation is implementing is training the youth in life skills, child development and on successful transition of children from ECD centres to primary schools.

The organisation is also training the HIV/AIDS support groups on establishment and management of income generating activities. FOM has supported the equipping of "model" ECD centres and health education activities including child health outreach campaigns on immunisations, growth monitoring, PMTC and vitamin A administration. With support from KCDF, the organisation has been training affiliated groups on resource mobilisation and monitoring of Programme's activities. FOM is currently supporting 22 ECD centres where 1,869 children from 1,602 households are directly benefiting from various ECD services provided.

Expected results: with the success of income generating activities, it is expected that the organisation will be able to adequately respond to the needs of children with special needs in a sustainable way.

**Grant Amount: Kshs 1, 362,000**

#### MISSION FOR COMMUNITY INITIATIVE AND DEVELOPMENT (MICODE), MALINDI

MICODE was initially registered as CBO but later sought registration as a local NGO serving children and communities in Magarini division, Malindi district.

The organisation utilised the grant from KCDF to initiate and scale up its income generating activities as well as support

other programme routine activities. Some of the key activities undertaken include: setting up of community demonstration farm complete with a green house for commercial purposes. Many community members are trained on innovative farming methods such as greenhouse farming, mushroom growing. MICODE has also been training ECD committees on resource mobilisation and supporting supplementary feeding programme in selected 4 ECD centres document. It has also been able to share information, success stories and best practices with various ECD stakeholders in Coast province. MICODE has supported the equipping of model ECD centres and health education activities including HIV/AIDS and PMTC, ECD programme implementation and monitoring of programme's activities. MICODE is currently supporting 32 ECD centres where 2,669 children from 1986 households are directly benefiting from ECD services.

Expected Results: that the organisation will, in a sustainable way, support its ECD programmes from the revenue from its income generating activities. It is also expected that various stakeholders in Malindi district will adopt some of the learnings disseminated by MICODE through its various platforms.

**Grant Amount: Kshs 1,064,400**

#### NGOLANYA COMMUNITY AIDS PROGRAMME (NGOCAP)

Ngolanya Community Aid Programme (NGOCAP) was founded as a CBO in year 2000 and registered as a NGO in year 2001. The organisation operates in Ngomeni and Nguni divisions of Mwingi District serving a population of 33,809 community members.

NGOCAP'S Mission is to alleviate poverty in the areas that it operates by supporting the members of the community to venture into

initiatives that uplift their livelihoods. One of its key programmes is ECD.

The organisation utilised the grant received from KCDF to start and scale up income generating projects, therefore ensuring the sustainability of its programmes. The organisation installed a greenhouse – this became a community demonstration plot – and also supported two of its community based organisations (CBOs) to grow food, through drip irrigation technology, at their ECD centres. The organisation has recently started a cereals storage business where it buys surplus cereals from the community and later sells at a reasonable price therefore addressing food shortage in the area. Through the same grant, 3 ECD centres were supported to expand their ECD centre gardens. Two more model ECD centres were supported with classroom materials and roofing materials.

Other notable achievements in the organization to date include: good governance from the board trained in leadership and finance management, increased community efforts in resource mobilisation, capacity enhancement of preschool teachers, reduced incidences of child rights violation in the community, reduced incidences of child morbidity due to intensified health education, strengthening of ECD/Child Rights network in Mwingi district, among others.

**Grant Amount: Kshs 850,000**

Expected results: that the organisation will be able to carry out its ECD programmes in a sustainable way, through the revenue gotten from the income generating projects. It is also expected that the children and indeed the community in this food insecure region will be guaranteed of food as more community members and ECD centres adopt innovative food growing methods.

#### MUUNGANO CBO, KILIFI DISTRICT

Muongano CBO is an umbrella Community Based Organisation (CBO) of 6 Villages community groups commonly known as Ummas in Kilifi. The organisation's office is located at Matano Mane Market, Vitengeni division in Kilifi district and serves children and community in the whole division. Muungano is the only active CBO in Vitengeni division. The CBO utilised grants received from KCDF to organize and expand its income generating activities that are expected to support its ECD programmes in sustainably.

Some of the key activities undertaken during the year include: putting up a commercial-flour or posho mill at Matano Mane Market which is serving the local community as well as the ECD centres in that area. It also supported feeding programme in 3 ECD centres where 274 children are benefiting from nutritious meals. The organisation has also started a bee-keeping project from which they plan to market the honey to be harvested.

Muongano continues to support routine ECD activities which such as: capacity building for ECD teachers, intensification of community health education campaigns, support feeding programmes in selected 4 ECD centres, document and share information, success stories and best practices in ECD programme through annual newsletter and streamline and carry out routine monitoring and follow up of ECD programme activities. Muungano is currently supporting 12 ECD centres where 920 children from 436 households are directly benefiting from ECD services.

Expected Results: with the success of the income generating activities, it is expected that children will continue to benefit from uninterrupted ECD services: play materials, ECD teachers support, nutrition, among others.

**Grant Amount: Kshs 866,600**

#### WOMEN CONCERN KENYA (WCK), GARISSA

Women Concern Kenya is a community based organisation (CBO) located in Garissa district. The CBO operates in Garissa District in the Bura, Sankuri and Modogashe divisions. The organization's offices are located in Garissa town from where field activities are coordinated. It was formed by concerned women who experienced the losses – of animals and settlements - occasioned by El-Niño rains in 1998. A group of women professionals (mainly teachers and health workers) from Garissa, decided to come together and assist the community through sanitation education, health issues such as vaccination, importance of education, importance of ECD.

The organisation utilised the grants received from KCDF to start and expand its income generating activities as well as support its routine activities. Some of the group's members were trained in basic business management skills and entrepreneurship while ECD committees were trained in local resource mobilisation to diversify their resource funding bases. The organisation plans to start bee keeping projects and local poultry breeds rearing to sustain the programme at the organisation level. Women Concern is also one of the organisations building endowment at KCDF.

Some of the key routine activities undertaken during the stated period include: mobilising resources for growing the endowment, supporting supplementary feeding for 4 ECD centres, supporting integration of ECD Programme and Duksi system (a mandatory religious teaching system among the Somali Muslims) and enhancing child participation. Currently, WCK is supporting 8 ECD centres where 638 children from 302 households are directly benefiting from ECD Programme's services.

Expected Results: that with the success of income generating activities, the organisation will be able to implement its ECD programmes, even without donor support. That the voice of children and women will be amplified in this community. That the community will learn and consider venturing in similar or different alternative livelihoods sources beyond pastoralism.

**Grant Amount: Kshs 755,000**

## FOOD SECURITY PROGRAMME

The Food Security Programme gives grants to communities demonstrating innovative food production initiatives that can be replicated in other parts of the country. These include: greenhouse farming, drip irrigation, conservation and value addition.

The following shows the areas where food security grantees are located:

### NYANZA

- Ugenya
- Migori
- Sio Port
- Kasipul Kabondo
- Nyando
- Homabay
- Mbita

### WESTERN

- Bungoma
- Misikhu
- Funyula
- Malkisi
- Chwele
- Kanduyi
- Busia

### EASTERN

- Kitui
- Yatta
- Mwingi
- Makutano
- Kerugoya
- Chogoria
- Kanyakine
- Isiolo

### RIFT VALLEY

- Nakuru
- Kajiado
- Naivasha

## COAST

- Likoni
- Kwale
- Kilifi
- Malindi

## CENTRAL

- Kinangop
- Ndaragwa
- Mithiga
- Kinamba

## NORTHERN

- Isiolo
- Garissa
- Daadab

Number of Beneficiaries Reached Directly:

Target for 2010-2011

The target for 2010-2011 is to increase the partners to 50, with outreach to at least 20,000 Households

Activity Completed	Grant Awarded by KCDF(Kshs)	Direct		Total
		Female	Male	
1. Makutano Community Development Association	600,000	600	250	850
2. Yike Wikwe Community Based Organization	150,000	283	25	308
3. Njorua Munyaka Self Help Group	165,000	34	42	76
4. Ujamaa Maji Safi Women Group	110,000	23	7	30
5. Gosheni Vision Community Organization	250,000	35	30	6
6. Active Youth Community Initiative	215,000	8	13	21
7. Makena Women Initiative CBO	200,000	35	-	35
8. Sio Port Lake Victoria Livelihoods CBO	250,000	415	212	627
9. Rural Community Empowerment Based Organization	250,000	448	148	640
10. Migori Widows and Orphans Support Group	200,000	30	-	30
11. Hope Community Development Foundation	250,000	820	380	1200
12. Mutitu Wendani Matangi Self Help group	250,000	37	3	40
13. Lusola Self Help Group	200,000	10	8	18
14. Rurii Women Goat Keepers	250,000	25	-	25
15. Zindikize Ladies Women Group	230,000	20	5	25
16. Wema Development Group	160,000	10	40	50
17. Hatua Likoni Community Based organization	165,000	11	7	19
18. OMEGA Child Shelter	250,000	400	700	1,100
19. Women and Youth Against AIDS Programme	250,000	450	900	1,350
20. Ngolonya Community Action Programme	250,000	350	450	800
21. Albinism Society of Kenya	400,000			1,000
22. Pambazuka Self Help Group	400,000	100	100	200
23. Kajiado Children's Home	300,000			80
24. Samuka Dairy Farmers	250,000	400	750	1,150
25. Awach Kibuon Water Users Association	200,000	95	65	160
26. Ndithini Community Dev Association	200,000	1,600	1,900	3,500
27. Serem Breathing Generations CBO	250,000	8	12	20
28. Amani Widows and Orphans Support Project	250,000	11	19	30
29. Katoo Progressive Society	200,000	11	19	30
30. Nasanyanait Women Group	200,000		24	24
31. Kabati Bidii Women Group	250,000	12	20	32
<b>Totals</b>	<b>6,395,000</b>	<b>6,281</b>	<b>6,129</b>	<b>13,476</b>

## GIRL CHILD GRANTEES

### GLOBAL GIVE BACK CIRCLE PROGRAMME

#### FUNDED BY MICROSOFT

##### ST. MARTINS GIRLS SECONDARY SCHOOL – GAP PERIOD FUNDING

The school played host to 12 students who undertook training in ICT, Accounting, Business and life skills. All the students in this class were graduates of the class of 2009 from St Martins Girls Secondary School and Blessed Generation Children's Centre. During the period under review, the institution received funding from the Global Give Back Circle to support the renovation of accommodation facility in the school, providing comfortable living quarters for the trainees in the ICT Lab. In addition Microsoft funded living expenses for the beneficiaries' upkeep while they undertook the Gap period Course at the school.

**Grant Amount: Kshs 690,000.**



#### FUNDED BY ATEBANK, GREECE

##### STAREHE GIRLS CENTRE

Starehe Girls has 30 beneficiaries in the programme. 23 – public universities, 3 colleges, 4 overseas universities. During the period under review, the institution received funding to support the Gap period i.e. the period before admissions to the university to train on ICT skills, Accounting, business skills and Life skills. In addition the funding provided accommodation facilities and a renovated a laboratory which was equipped with computers to provide a first class facility for training at the institution.

**Grant Amount: Kshs 2,897,580**

## UNIVERSITY/COLLEGE SCHOLARSHIP SUPPORT EDUCATION TO VULNERABLE GIRLS

The programme provided funding to following beneficiaries admitted to Year 1 to the various local and International universities and colleges;

Anne Karimi  
Kenya Medical Training College  
Course: Diploma in Nursing  
**Grant Amount: Kshs 128,325**



Asmahan Pogal  
University of Nairobi  
Course: Bachelor of Arts (Anthropology)  
**Grant Amount: Kshs 63,700**



Caroline Obai  
Kenyatta University  
Course: Bachelor of Economics  
**Grant Amount: Kshs 52,850**



Christabel Simiyu  
Jomo Kenyatta University of Agriculture and Technology (JKUAT)  
Course: Diploma in Mass Communication  
**Grant Amount: Kshs 131,529**



Doreen Ng'etich  
Jomo Kenyatta University of Agriculture and Technology (JKUAT)  
Course: Diploma in Business and Information Technology  
**Grant Amount: Kshs 131,529**



Edna Tukiko  
Kenyatta University  
Course: Bachelor of Science (Community Resource Management)  
**Grant Amount: Kshs 45,060**



Faith Ngila  
Egerton University  
Course: Bachelor of Science (Bsc.)  
**Grant Amount: Kshs 51,500**



Felistus Mutiso  
Egerton University  
Course: Bachelor of Science (Agriculture)  
**Grant Amount: Kshs 51,500**



Lidempta Kawira  
Jomo Kenyatta University of Agriculture and Technology  
Course: Bachelor of Science – Land Resource Planning and Management  
**Grant Amount: Kshs 83,084**



Mary Ndunge  
Jomo Kenyatta University of Agriculture and Technology  
Course: Bachelor of Science in Information Technology  
**Grant Amount: Kshs 103,719**



Mercy Kanario  
Moi University  
Course: Bachelor of Hotels & Hospitality Management  
**Grant Amount: Kshs 43,650**



Millicent Njeri  
Moi University  
Course: Bachelor of Science (Graphics and Communication)  
**Grant Amount: Kshs 43,650**



Naom Oganga  
Moi University  
Course: Bachelor of Science (Environmental Health)  
**Grant Amount: Kshs 48,500**



Natalie Ndunda  
Maseno University  
Course: Bachelor of Environmental Science and Earth Science  
**Grant Amount: Kshs 49,650**



Sarah M Wang'ome  
Kenyatta University  
Course: Bachelor of Environmental Planning and Management  
**Grant Amount: Kshs 55,050**



Vera Anyango Obare  
Kenyatta University  
Course: Bachelor of Commerce  
**Grant Amount: Kshs 45,050**



Vera Oreti  
University of Nairobi  
Course: Bachelor of Economics  
**Grant Amount: Kshs 60,500**



Wilkister Akinyi  
University of Nairobi  
Course: Bachelor of Science (Meteorology)  
**Grant Amount: Kshs 60,500**



Zainab Mejja  
Kenyatta University  
Course: Bachelor of Science (Biotechnology)  
**Grant Amount: Kshs 52,900**



Mary Mwende  
America University in Dubai  
Course: Bachelor of Business Administration  
**Grant Amount: US\$ 1,500**



Caroline Macharia  
America University in Dubai  
Course: Bachelor of Science in Computer and Information Technology  
**Grant Amount: US\$ 1,500**



Khadija Abdullah Said  
America University in Dubai  
Course: Bachelor of Business Administration  
**Grant Amount: US\$ 1,500**



Vivian Onano  
Carthage Collage, Wisconsin USA  
Course: Bachelor of Science  
**Grant Amount: Kshs 160,700**



Elizabeth Njeri  
Wildlife College  
Course: Diploma in Hotel Management  
**Grant Amount: Kshs 282,990**



Mary Wanjiku Chege  
Wildlife College  
Course: Diploma in Hotel Management  
**Grant Amount: Kshs 282,990**



Caroline Nyamoita  
Jomo Kenyatta University of Agriculture and Technology  
Course: Diploma in Community Development and Social work  
**Grant Amount: Kshs 276,715**



Catherine Wangui Magio  
Vision College  
Course: Accounting  
**Grant Amount: Kshs 192,920**



Mikelina Ngina  
Kenya Wildlife College  
Course: Diploma in Hotel Management  
**Grant Amount: Kshs 282,990**



## BOARD MEMBERS AND TRUSTEES

Eng. Isaac Wanjohi (Trust Chairman)  
 Prof. Mohammed Abdullah (Board Chairman and Trustee)  
 Nuriya Farah (Board member)  
 Mr. Edmund Mudibo ( Board Member)  
 Dr. Vijoo Rattansi (Trustee)  
 Mr. Arthur Namu (Board member)  
 Mr. Kibuga Kariithi (Trustee)  
 Ms. Atia Yahya (Baord member and Trustee)  
 Ms. Eunice Mathu (Board member)  
 Mr. Donald Kaniaru (Trustee)  
 Mrs. Janet Mawiyoo (CEO and Ex Officio Board member)

## FRIEND OF KCDF US – BOARD MEMBERS

Mr. Eruch P. Nowrojee  
 Mr. Frederick N. Cooper  
 Dr. Joyce Malombe

## STAFF MEMBERS

Al Kags, Head, Marketing and Partnerships  
 Catherine Kiganjo, Programme officer, Institutional Development and Governance  
 Dennis Gitari, Accounts Assistant  
 Francis Kamau, Finance, Administration and Investment Manager  
 Gladys Miriti, Programme Officer – Early Childhood Development  
 Janet Mawiyoo, Chief Executive Officer  
 Judith Mulinge, Communications Intern  
 Lynnette Micheni, Programmes Intern  
 Mercy Maneno, Executive Assistant  
 Mutheu Mbondo , Programme Officer – Arts and Culture  
 Oliver Konya, Logistics Officer  
 Peter Wechuli, Programme Assistant – Youth Development Programme  
 Sarah Munyua, Grant Management Accountant  
 Simon Wachira, Communications Officer  
 Sonia Rasugu Co-ordinator - Youth Development Programme  
 Tom Were Programmes Director

## 2009/2010 FUNDING PARTNERS

The World Bank/Japan Social Development Fund  
 Bernard van Leer Foundation  
 Global Give Back Circle  
 Ford Foundation  
 Trust Africa  
 Rockefeller Foundation  
 Africa Women’s Development Fund  
 Urgent Action Fund

## CORPORATE PARTNERS

Chandaria Foundation  
 Safaricom Foundation

## COMMUNITY OPEN CORPORATE SPONSORS

Air Kenya  
 AMIRAN Kenya  
 Aromatic Spa  
 CFC Stanbic  
 Commercial Bank of Africa  
 Export Trading Co. Ltd  
 Heritage Hotels  
 GlaxoSmithKline  
 Gimco Ltd  
 IQ Plus  
 Kaniaru and Kaniaru Advocates  
 Ketepa  
 KPMG  
 Lion of Kenya Insurance Co. Ltd  
 Marketing Africa  
 Nation Media Group  
 Octagon Pension Services  
 Old Mutual Asset Managers (K)  
 Nairobi Hospital  
 Preferred Personnel  
 Prime Bank Ltd  
 Riara Schools  
 Safaricom Ltd  
 Safarilink Ltd  
 Sarova Hotels  
 Snyder Links Lab  
 Tamarind  
 Travel Creations  
 Wine Masters



## ENDOWMENT CONTRIBUTORS – COMMUNITY OPEN 2010 GOLFERS AND CONTRIBUTORS TO THE ENDOWMENT

Les Baille	Julius Koros	Amit Rai
Larry Ngala	C.Kihara	J.Mburu
Githae N	Norbert Wabwire	R. Chutha
Wilson Mithamo	James Mbuthia	Edward Mugo
Ben Waruhiu	SM. Kariuki	MM Ndegwa
Mwai Mbuthia	David Gachoya	Peter Wartnaby
F.K. Githinji	Sam Mbori	EM Kinyua
Linus Gitahi	Margaret Kariuki	Paul Mathenge
V. Kioko	Susan Kanyora	JW Kungu
Dennis Saukwa	Mary Kibutha	Kethi Kilonzo
P.Matu	Daniel Kibuga	Martin Mulwa
M.Kiruti	Martin Mbugua	L Shani
C.Kinuthia	Amb. Ben Kipkorir	Patrick Wambiri
Michael Laxmi	Robert Onyango	Muzzamil Sumap
Deram .M	D Mwindi	JG Iracha
J.Shah	SK Kantai	Simon Ndirangu
A.Shah	J Mathenge	Byaruhanga Rogers
DK.Mbuthia	Michael Mwangi	Jim Karuiki
Dr. Ngugi	E.G. Mbugua	Geoffrey Mureithi
Robert Peter	Charles Njendo	Robert Murimi
Nicholas Ithondeka	Rose Njendo	Dan Owino
James Muraguri	David Okello	W. Macharia
Bill Okwiri	B.Wahiruhio	Lucas Maranga
Eunice Mathu	P. Sanghrajka	Philip Kungu
Rose Githua	Y.Jay	David Mburu
Joseph Rono	John Wairumbi	P.Mathu
Jane Munene	Rhoda Wairumbi	Lesley Wartnaby
Simba T	Aly Papat	Janet Mawiyoo
Sam Onyambu	Charles Njuguna	David Mbatia
R.Shah	Sundy Rajia	Paul Kagwamba

## ENDOWMENT CONTRIBUTORS CONT..

Al Kags	Alfred Okeyo
Caroline Mutoko	Nadhir Mohamed
Catherine Kiganjo	Alex Waithaka
Gladys Miriti	James Karanja
Janet Mawiyoo	George Kiganjo
Josephine Wambui	Catherine Kiamba
Julius Muasya	
Kenpoly Manufacturers	
Mercy Maneno	
Oliver Konya	
Tom Were	
Sonia Rasugu	
Francis Kamau	

# OUR VISION

All Kenyan communities giving and working together in a prosperous nation.

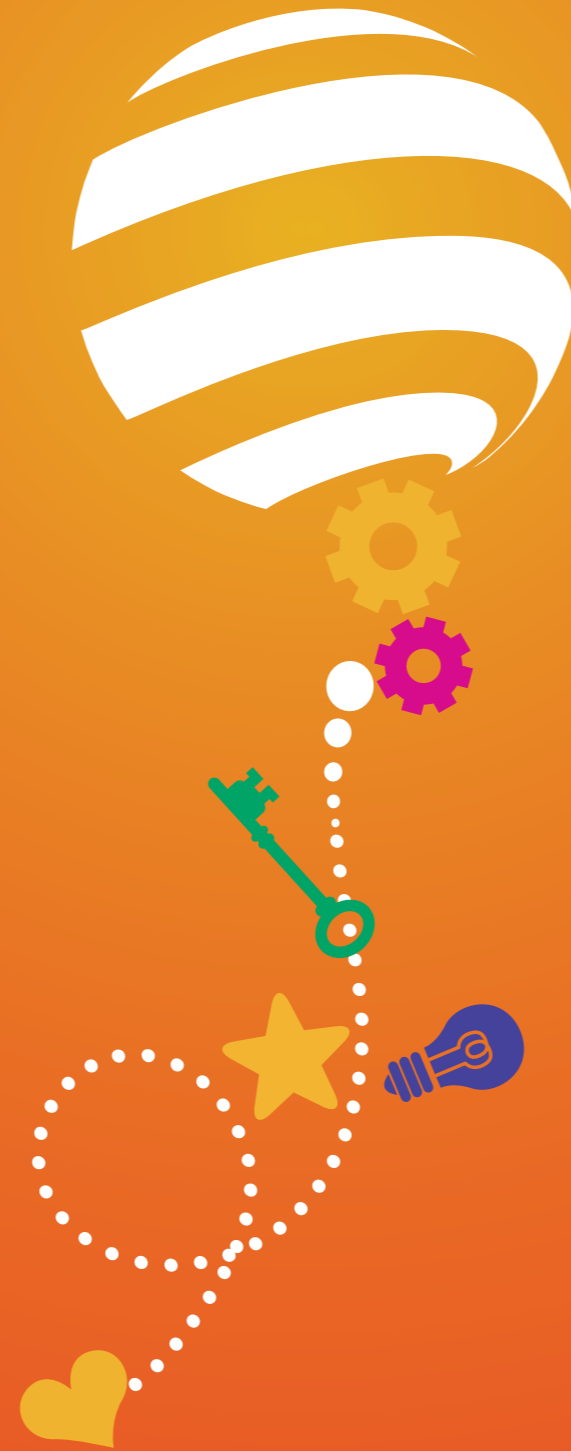
# OUR MISSION

KCDF promotes sustainable development of communities through social investment, resource mobilization, endowment building and grant making.

# OUR BELIEFS

As a Foundation and in tackling the questions of poverty eradication and development, we believe that:

- Every human being has the potential to make a positive difference in their own lives and that of others around them.
- People's participation, ownership and control are vital to equitable and sustainable development
- Every community has assets to use towards its own well being as well as for national development
- Meaningful development focuses on people, brings freedom, space, creativity and transformation
- The poor are capable of achieving long-lasting improvements in their lives
- Civil society has potential to influence social, economic and political change



# OUR VALUES

**Respect for the rights and dignity of every human being :** We attach great value to the dignity and rights of every human being regardless of ethnicity/race, religion, gender, age, physical or mental disposition

**Equity** - We strive to promote and address equity in all our endeavours in pursuing the goals and objectives of the Foundation

**Honesty and Transparency** – We value and promote transparency, honesty and efficiency in our dealings with others irrespective of the social standing

**Commitment to social justice philanthropy:** We are committed to philanthropy that promotes social justice, integrity, and respect for others in order to uphold the public trust and secure the rights of poor people.

**Working with others** – We value and are committed to quality and broad participation with other likeminded individuals or organisations

**Learning and innovation** – We value reflection, learning and innovation and strive to evolve, promote and share best practices with others.



For more information, contact:  
The Chief Executive Officer  
Kenya Community Development Foundation  
P.O.Box 10501-00100 Nairobi  
Tel: +254 20 3540239/ 020 8067440, 020 8067441, 020 8067442  
Office Cell: +254 722 168480/ 736 449 217  
Fax: +254 20 8067440  
[www.kcdf.co.ke](http://www.kcdf.co.ke)

