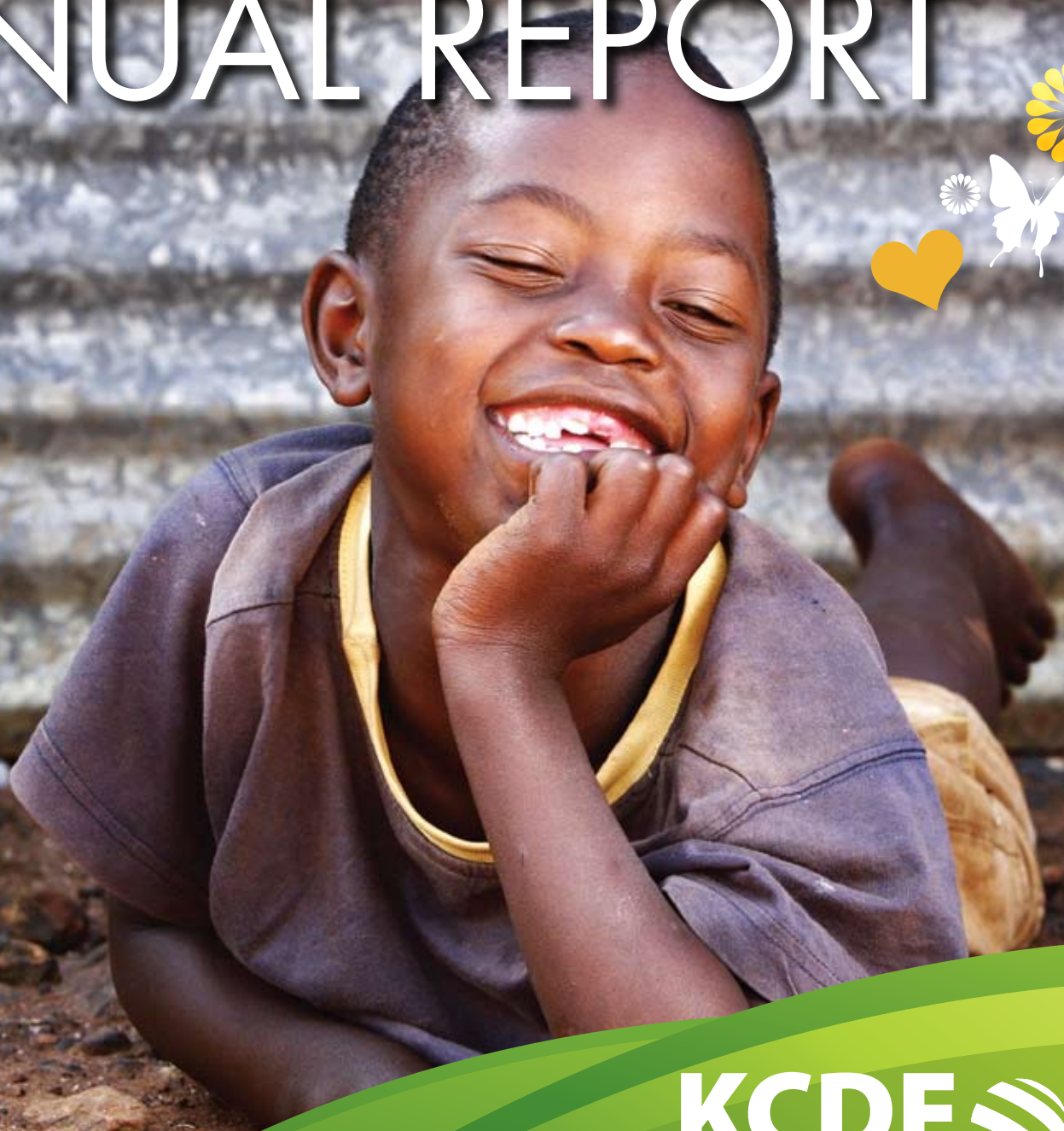


# 2008-2009 ANNUAL REPORT

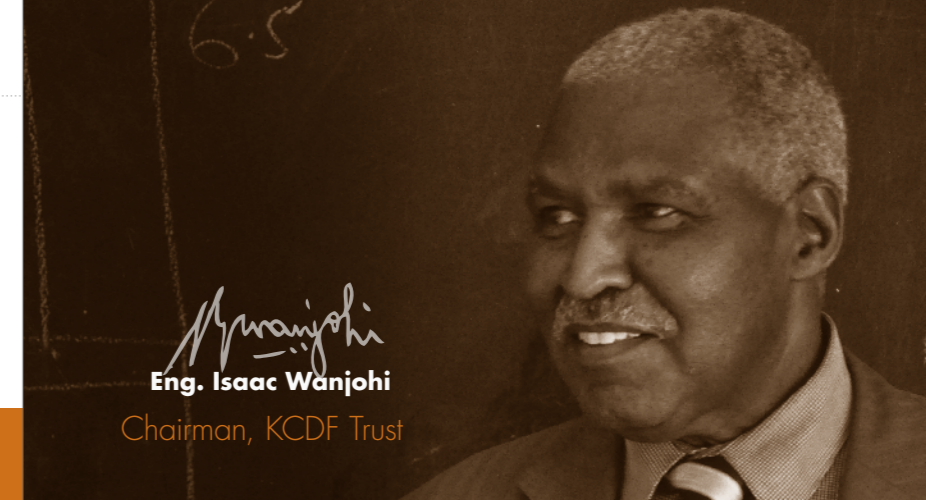


**KCDF**   
people, giving and working together

# contents

Supporting Communities in Perpetuity	3
Revamping Governance	4
Accountability for Prosperity	5
Nurturing Prosperity	7
KCDF Programmes Overview: 2008-2009	8
Youth Development Programme	10
Arts and Culture	11
Food Security	12
Education Scholarship Programme	13
Girl Child Programme	14
Early Childhood Development Programme	15
The Numbers	17
KCDF Grantees	24

## SUPPORTING COMMUNITIES IN PERPETUITY



“

This is the first time that the Chairman of the KCDF Trust is writing to you in the annual report. The KCDF Trust was created in year 2004 as the custodian for the Foundation's properties and funds to specifically ensure that the resources available to KCDF continue to grow and are managed in the most prudent manner, in trust for Kenyan Communities. It was an effort to ensure that a credible check and balance framework is instituted for Kenya's first public foundation.

However, the organisation is not a stranger to you, I dare say. 2010 is the 13th year since KCDF was formed by visionary people who worked in the both development world and the private sector, and whose interest was one: to see Kenyan communities take control of their fate in an organised and sustainable way.

We have grown over the years, and currently have reached more than 300 communities around the country. Together with these communities, we have in particular been able to touch the lives of more than 200,000 needy children under the age of 8 years, more than 60,000 young people and we have seen more than 1000 students through high school and beyond. Such impact is very rewarding for us and for our community partners who have proven that, if we work together as Kenyans, and exploit fully the resources within our grasp, we can be able to make great progress. In addition, we shall be able to attract other partners who will seek to support our work.

In a country categorised as poor, KCDF is a pioneer organisation in demonstrating that an endowment is also possible in Africa! After six years since the registration of the Trust, KCDF through collaboration with communities, friends and willing donors, has been able to grow its endowment from about US \$ 1 million to close to US \$ 4 million. Even with the downturn of the global economy, we have been fortunate to maintain a reasonable return on the investments that we continue to make towards the sustainability of our communities through good business practice and prudent investment. Our Trustees meet with our professional investors (Old Mutual Asset Managers) on quarterly basis to monitor and advise on the growth of the fund. We have also engaged a Custodian (Barclays Securities) and an Administrator (Octagon Pension Services) to ensure efficiency in fund management.

For every shilling that you and I raise, Ford Foundation will commit three.

The Ford Foundation, an organisation that has been close to KCDF since the beginning, in support of our commitment to vulnerable Kenyan communities agreed to provide a Challenge fund in 2006. They committed US\$ 3 Million on condition that we came together with Kenyans of all walks of life to raise US\$ 1 Million (which is about Kshs. 75 Million). This means that for every shilling that you and I raise, Ford Foundation will commit three. So far, we have made good progress by raising about a half of the required amount and are left with the task of raising the difference.

As Chairman of the KCDF Trust, the organ that is working hard to grow the endowment for Kenyan communities, I appeal to you as an individual, as a friend of KCDF and especially as a fellow Kenyan who loves this country, to join hands with us to raise these funds and ensure that our disadvantaged communities have the funding they need in perpetuity to uplift their lives from poverty and other social injustices.

Thank you to all those who are already part of this effort. God bless you.

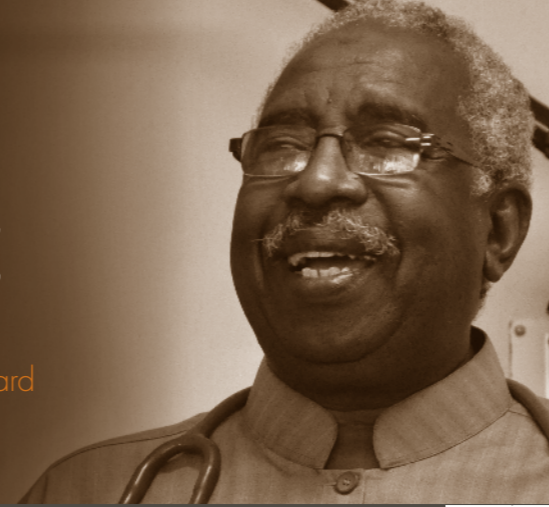
”

# REVAMPING GOVERNANCE



Dr. M.S. Abdullah

Chairman, KCDF Board



4  
W  
elcome to *MyCommunity*, the bumper publication for 2010. This is a publication that we are committing ourselves to publish at least twice a year for the express purpose of ensuring that we keep you closely appraised on the progress that we are making and the impact that we are delivering every year.

I have worked in the non-profit sector in various capacities and some of the key issues that have dogged the sector for a long time are accountability and transparency. The lack of these two values has over time reduced the interest and trust of many of our people in volunteering and contributing to good causes.

In an effort to bolster KCDF's commitment to good governance and accountability, the Board of Directors and Trustees saw the need to increase efficiency and effectiveness by reorganising the two entities which were established in an effort to ensure a check and balance system is reinforced in this first Kenya's Community public foundation.

The reorganisation has, among other things, resulted in full maximisation of the skills and talents that exist among the individuals in both. This reorganisation has also been extended to the Board and Trust Committees to ensure that we

increase their individual knowledge about the work of the Foundation, therefore enabling them to be better placed to sell the organisation to all stakeholders that they encounter in their daily assignments.

The process has reduced duplication of the two entities' functions and increased their strategic engagement in the affairs of the Foundation. Both will now be better placed to increase their connections to the major role that KCDF is playing in transforming Kenyan communities and enabling them to take charge of their lives.

From a governance and accountability perspective, the KCDF Board will henceforth be responsible for ensuring the strategic direction of the operations of the Foundation by overseeing the work of the Management in supporting Kenyan communities to push their own development agenda.

The Board will structurally be able to be more articulate and accountable to the KCDF Trust who will, among other roles, focus in ensuring that the resources raised and invested for the work of the Foundation are used in an accountable and credible manner in perpetuity.

The reorganisation has therefore served to increase efficiency in KCDF's ability to ensure the mission and visions are better realised with more diligence and accountability.

In the coming months, we have committed to take our accountability to the next level by institutionalising an inbuilt mechanism which will ensure we are more accurately and promptly able to show you the impact we are making with the resources bestowed to us by our donors and especially the Kenyan public.

Thank you once again for walking with us in this journey and for your support and encouragement especially to our team on the ground.

Our reorganisation has increased efficiency... diligence... accountability in realising our vision and mission.

# ACCOUNTABILITY FOR PROSPERITY



Janet Mawiyoo

CEO

With the financial down turn especially in the North in 2007-2009, many funders have had to review their strategic areas of work as they grapple with fewer resources for their ever growing funding portfolios. KCDF has not been spared of this challenge. In such a situation, our accountability is to the communities that we support to progressively better their lives and we have been consumed with one major question: when shall we have our own money, as Kenyans, so that we can decide our priorities and fund them?

It has been a common experience for us to sit in various meetings with donors (an increasing number of whom are Kenyan companies), justifying what we must do and how we must support our communities and then turn them to grantees and work with them to rationalise their grants – sometimes working with them to increase their confidence to handle more resources and do more.

To one group we have to explain what communities need and how they should be empowered to fulfill their needs. To the other group, we have to balance expectations and increase their confidence to deliver more and better. All along, we must constantly be aware of the of the large number of requests that we are forced to regret.

My team and I, (who you will meet in the *who is who* section) are ever so conscious of the humongous 'cloud of witnesses' whose faces are real and known to us, the communities we work with, whose struggles are our struggles and whose success we share.

While working hard to be accountable to our communities, we are also accountable to these international organisations, private companies and individuals who stand with us to support communities at their point of need. To these, we endeavour to show that we have been prudent in ensuring that we stretch every cent to cover more and achieve greater impact. With this group, we go to the communities and work with them and when they succeed, we all celebrate together.

4  
R  
ecently, while reflecting on the achievements and challenges of the last year, I came across this quote that vexed me:

*"We philanthropy professionals are probably working in the only industry that is essentially accountable to NO ONE other than our Boards of Trustees"*

This statement could not be further from the truth in my experience. For instance, over the past year, my team and I have fully engaged with the demands of being responsive and accountable to an increasingly large group of 'invisible' stakeholders, who despite their relative 'silence', are ever present in our lives, thoughts and conversations.

This year, I witnessed more than ever before, the joy in the faces of our board members, my team and our partners (such as the ones above from Nairobi Hospital and Safaricom), celebrating and marvelling at the impact that we are delivering to our communities. Together, we celebrated with our communities who saw bumper harvest, after a long time because of having adopted modern technologies to grow food. There are many stories in our office about the size of those pumpkins, the

This year, I witnessed more than ever before, the joy in the faces of our board members, my team and our partners celebrating and marvelling at the impact that we are delivering to our communities.



juiciness of the succulent tomatoes, the richness of the sukuma wiki, how hot the red chillies were, the onions, the dark green maize... and they go on.

I can clearly say, that the *Ustawi* programme has been a raving success. Our challenge is to ensure that this work is sustained and expanded, rather than lost with the onset of heavy rainfall in many parts of the country. Through this, Kenyans will say kwaheri to famine and to food relief.

At the same time, we celebrated with the orphaned children that we have been supporting through secondary school in the last 4- 5 years as they graduated to join various colleges and universities. Their success proved that the investment has been worthwhile. Going forward, We plan to continue to encourage the formation of alumnae associations of students in each of the schools or groups we work with who are supporting students, to provide an opportunity for them to support other needy children benefit in future.

This year we were also able to take our new brand to another level, by articulating in a more coherent manner about how we present ourselves across the board, in all our functions, and in ALL our communication. We also raised our profile through closer interaction with a larger number of companies who are interested in pursuing different ways of working with us through their CSR departments, to support needy communities in a more sustainable manner.

We are very much aware that increased awareness by the public about our work in transforming the lives of vulnerable people in our country, will also lead to a greater demand for more accountability, as more people become engaged in not just hearing about what is happening, but in supporting these efforts financially. In 2009/2010, we shall take this effort a notch higher by increasing opportunities for all types of beneficiaries to show the impact of our work.

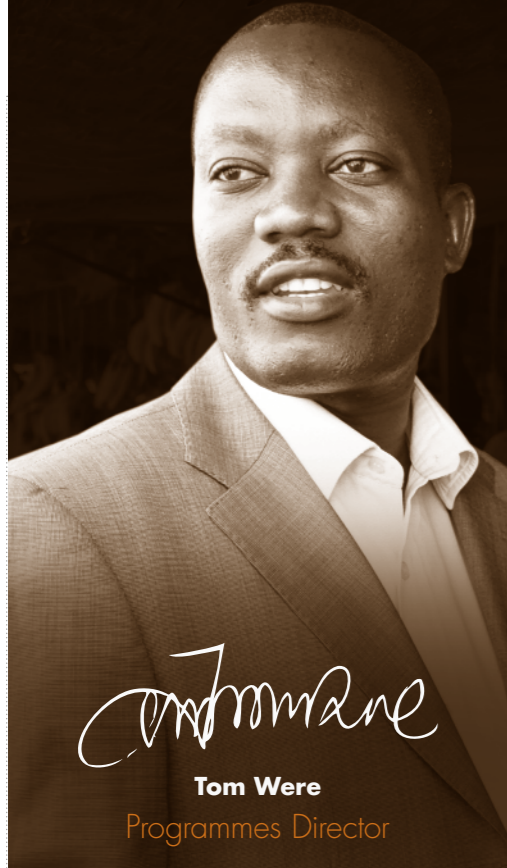
I trust you will enjoy going through these pages as they take you deeper into the life of the communities that we work with.

Thank you so much for all your support and encouragement.

# NURTURING PROSPERITY



The year 2008-2009 was the year when our focus was to nurture the structures of prosperity, despite the economic challenges that the world had to face and the extreme challenges that many of our communities were faced with due to a prolonged drought. Thankfully, we were able to achieve our targets.



  
**KCDF PROGRAMME OVERVIEW:  
2008-2009**

The year 2008-2009 was arguably the most challenging period for KCDF in its programming and capacity building support to communities in Kenya. During this period, the country experienced a prolonged drought that saw many communities depend on relief food as well as decimation of their livestock. This was also the period when the country was gradually recovering from the effects of the 2007 post election unrests. Due to this, our programmes had to be adjusted accordingly to respond to those new challenges. Through this, we demonstrated internal organisational flexibility to respond to emerging urgent issues of national interest.

At the start of the programme year 2008-2009, KCDF had the following programmes: Youth Development Programme in partnership with World Bank, Changamoto Arts Fund in partnership with Ford Foundation (East Africa Regional Programme Office), Early Childhood Development Programme, in partnership with Bernard van Leer Foundation (Netherlands), Scholarships

Programme in partnership with the Chandaria Foundation (Kenya), Girl Child Support Programme in partnership with Global Give Back Circle (GGBC, USA) and funding from the AteBank (Greece) and Food Security Programme Support to Communities in partnership with the Safaricom Foundation (Kenya). In total KCDF had more than US\$1.025 Million to provide as scholarships and grants to children and community organizations across the country respectively.

**Targets for 2009-2010**

Our programmes targeted to reach at least 350,000 youth (direct and indirect), over 60,000 children aged below 8 years, at least 200 education scholarships to orphans and children from poor families and education and gap period (18 months

from completion of secondary education and reporting to college or university) support to at least 100 girls from poor families. In the same year KCDF supported at least 1,500 households across the country to adopt new food production technologies that embrace water harvesting, conservation and drip irrigation in response to the vagaries of global warming and weather changes.

**Achievements and targets for 2009-2010 –**

Despite the difficulties associated with this period, KCDF was able to achieve its set targets. As part of our contribution to peacebuilding and reconciliation initiatives, the organization identified strategic partners in the most affected regions (mainly Rift Valley, Western and Nyanza) and provided grants support to the tune of US\$270,000 dollars to support peace building and local economic recovery. In addition, more than US\$60,000 was given to communities to address food security challenges in the most affected regions of Eastern Province and Southern Rift Valley. Overall, KCDF made a total of 123 grants to communities across Kenya and provided 235 scholarships.

KCDF continuously carries out research and documents learning from its work with communities. As a result, our programmes continue to adapt to emerging demands and effectively respond to the need to achieve the highest levels of results and impact. This period witnessed the birth two very innovative programme initiatives i.e. the USTAWI Initiative, which is the new brand name for KCDF's Food Security Programme, now embedded with modern agricultural technologies and water and environmental conservation concepts; and Shabaa Youth Initiative, a new and creative way to mobilize and stimulate mentorship and leadership development among young people..

KCDF also broke ground into new regions in the Northern frontier. These included West Pokot, Marsabit and Turkana among other remote and marginalized districts in the country.

As we start the New Year 2009-2010, KCDF is optimistic that the opportunities and support to community development projects can only grow in leaps and bounds despite receiving new information at the start of the period from some of its donors indicating strategic changes to their funding policies and sectors in the coming years.

The programme team will continue to mobilize new partnerships and prepare communities for possible separation in ways that address their resource mobilisation diversification and income generating activities. The target is to reach at least 3,000 food insecure households, 450,000 youth, 70,000 children below 8 years, 400 scholarships and 100 girls. To accomplish this, the programme team is currently in discussion with at least 5 possible funding partners across its programmes with the aim of raising an additional US\$500,000 annually towards capacity building and grant making for community initiatives.

Congratulations to the programme team and to the rest of the KCDF staff for all the support.

**1500**

Households supported for Food Security

**US\$ 270,000**

In support of Peace building

**123**

Total Grants given

**235**

Scholarships given

# Youth Development Programme

## YOUTH SHOW LEADERSHIP IN THEIR COMMUNITIES

The year 2008- 2009, was the year that Kenya was rising from the ashes of post election violence. This was the period when the country was rebuilding and putting up structures to foster cohesion. All these attempts were made with the candid realisation that the youth were at the centre of the violence that rocked the country, either as perpetrators or victims. The rebuilding efforts were therefore aimed at fostering integration among young people as well as addressing the predisposing factors that made them take such a frontline role in the violence.

- Livelihoods
- Participation
- Leadership
- Accountability

KCDF's Youth Development Programme focus for year 2008-2009, was largely informed by the need to have focused, inspired and responsible young people who would be change agents who would be willing to lead and build cohesive communities. To accomplish this, the Youth Programme launched a leadership training programme targeting the whole country. A total of 170 young people were trained on leadership, responsible citizenship, peace building and conflict resolution. This programme led to the birth of an inspirational initiative known as "Shabaa". Coined out of Swahili words Saba and Shabaha, meaning seven and focus respectively, Shabaa reminded the graduates of the programme on the need to be focused and to be guided by 7 leadership values that they learnt.

Through this initiative, the inspired Wanashabaa, as they came to be known, traversed the country, preaching hope and

rallying their fellow young people to join the movement. They also shared valuable case studies of their success with the communities. Working with respected national figures, the Youth Programme continued to inspire and mentor them, even after they had demonstrated they were putting the training into practice. There is no doubt that Wanashabaa will continue to play a pivotal role in building their communities.

The Youth Development Programme also made tangible milestones in building youth serving and youth organisations. As a matter of fact, the number of partners grew from 31, in the previous year, to 42 in the year 2008 – 2009. The programme reached at least 200,000 young people across the country, out of which 60,000 benefited directly from training and grants. Our challenge remains the lower participation of young women in community initiatives.

In June, the Youth Development Programme's partners and grantees reflected on the impact of the Programme, looking at both grant administration and outcomes since 2007. The general view was that KCDF was a good partner, providing mentorship and capacity building support that resulted in stronger youth organisations and empowered youth. Partners urged KCDF to increase the support for institutional and core costs.

In 2010-2011 we will focus on training youth people to enable them participate in the audit of funds and projects within constituencies and local authorities, in their areas of residence. The Youth Programme will also support youth programme aimed at increasing the participation of girls and women in community development. This, we shall do, by supporting community organisations working with women and women led organisations, especially from the marginalised regions of the country.

**Sonia Rasugu**  
Coordinator,  
Youth Development Programme

# Arts and Culture

**KCDF PLACES GREAT VALUE ON THE ARTS** and the many roles they play in our lives: as an expression of our identity as a people; a career; a way through which we can grow Kenyan audiences to be consumers of our country's rich and multicultural heritage. As part of our Arts and Culture programme, we partner with the GoDown Arts Centre to implement the Changamoto Arts Fund.

In year 2008- 2009, we have had the great opportunity to support very interesting art projects under the Changamoto Arts Fund. The work supported was groundbreaking in introducing new art into the Kenyan arts scene. The futuristic film Pumzi, Prison Sex II, Contemporary Dance Film Scenarios; potentially controversial exhibitions such as Michael Soi's Dishing Out and the deeply community rooted Kayole-Umoja Drama Festivals, Kichaja and Ormoti the full story are examples of the new and refreshing works supported.

All projects were aligned to the objectives: new; authentic; experimental; public and engaging. In the year 2008-2009 we received the most quality applications in five years, out of which we made 19 grants and impacted approximately 250 artists in the year.

We also increased the capacity building aspect of the programme. To add to that, we supported our grantees to improve on their organisational development capacity by linking them with professionals who supported them in this process. We also facilitated business planning sessions with artists and began challenging the way that the arts community looked at itself in the past by introducing the concept that artists should be entrepreneurs, who ekes a living out of their works.

We also managed to bring artists and the media together to begin making links between these two sectors in a bid

to make the artists more visible. The programme also took a more business minded approach. This was informed by the need to make arts valuable and significant in various sectors of the economy.

The year was not without challenges. We received the largest number of applications in our history in the four calls for applications that we made. This increase meant that we could not fund all the worthy projects presented due to the limited funding. This experience justified the need to find ways to grow our local resources for the future in order to be able to support more projects.

The focus for the coming year will, therefore, be to increase our resources for the fund so that we can have a larger kitty from which to make grants and run other programme aspects. We shall also be keen to broaden the programme's focus areas. Whereas in the past year we have worked almost exclusively with bringing new and innovative art and projects to the Kenyan public, we would now like to introduce support for projects that have more of a community-focused slant. 2010 will be a year focused on growth for the Arts and Culture programme.

**Mutheu Mbondo**  
Programme Officer,  
Arts and Culture

# Food Security



**IN RECENT YEARS**, Kenya has been experiencing cyclical food shortages, jeopardizing livelihoods and slowing economic growth. The response has been predictable: frantic appeals by organisations and individuals at the local and international level, which is but a short term measure.

As a response to this, in early 2007 through Safaricom Foundation support, KCDF supported communities in the dry parts of the country to implement pilot projects aimed at shifting the response of food shortages in Kenya from relief to food security. The pilot programmes, implemented in Mwingi, Kajiado, Yatta and Garissa were very successful. Buoyed by this success, KCDF started the Ustawi initiative, which aims at supporting Kenyan communities to grow food innovatively despite the vagaries of weather.

Through Ustawi, communities adopt modern technologies like greenhouse farming, drip irrigation and water harvesting and conservation, to grow food for subsistence and commercial. The greenhouse that has the drip irrigation system, a 600 litre storage tank, seed and fertilizer.

Our communities are providing valuable lessons and inspiration that Kenya can grow its own food despite the vagaries of weather. A case in point is Makutano Community Development Association, an organisation from the dry Yatta plateau. The prolonged dry spell that the country experienced in 2009 decimated livestock and left the farms bare. Through Ustawi, KCDF donated a Farmer's Kit (greenhouse, fertilizers, seeds, drips irrigation system, 600 litres tank) to the group.

Within two months of its installation, members of the community, who were used to buying food from Matuu town (located 50 Km from the area), got a relief when they started buying vegetables and tomatoes at their door steps. The nearest town, Kithimani, once sleepy town, became a busy market, with a good number of young people selling tomatoes.

In Nzeluni, Mwingi, Omega Child Shelter is now growing food and supporting children through a wholesome nutrition process thanks to Ustawi. Further South in the district, Genesis Community Development Assistance is supporting women self help group to venture into this smart farming and therefore cement their contribution to the society.

Women and Youth Against Aids and Poverty (WAYAAP) –an organisation based in Isiolo, is growing food through the Ustawi initiative and serving hundreds of orphans and elderly women.

*Continued on page 16*

# Education Scholarships Programme

**IN RECENT YEARS**, the Ministry of Education has been allocating some funds to subsidize tuition in high school education. While this has been hailed as a step in the right direction, parents are still feeling the burden of covering the other costs like accommodation, meals, uniforms, construction and many others. For students from poor backgrounds, high school education is still a pie in the sky.

Working with various partners, KCDF has been awarding scholarships to bright needy students through secondary education every year. The scholarships are given through credible organisations that can transparently and ably manage bursary schemes.

In the year 2008-2009, a total of 171 needy students benefited from the scholarships. Out of these, 100 were supported by Chandaria Foundation, the philanthropic arm of Comcraft group companies while 71 were supported by KCDF. The two organisations committed Kshs. 1.2m and 1.86 Million respectively. The number of girls and boys that were sponsored was 89 and 82 respectively.

In the last two years, concerns have been raised about the frequency of riots, unrests and reports of indiscipline in secondary schools. This has been attributed to general indiscipline, lack of mentorship programmes targeting

Working with various partners, KCDF has been awarding scholarships to bright needy students through secondary education every year.



students, among other factors. Our partners demonstrated a degree of responsiveness when they organised mentorship and life skills camps for our students. We commend them for that. We are proud to report that none of our students was caught in the web of unrests and indiscipline.

As we look forward to 2010, we will increase the number of female students benefiting and achieve our desired balance in ration of girls to boys to 60:40. This target is informed by

our concern that education of girls among many communities in Kenya remains low due to the tendency to give preference to boys over girls where a choice has to be made, particularly in relation to education opportunities. More prohibitive cultures like early marriages and female genital mutilation (FGM) continue to make education among a dream too far.

We shall also put more emphasis on identifying students from marginalised communities in the country especially from the Northern frontier. Our corporate outreach will be intensified, aimed at to invite more partners to bolster this programme.

**Catherine Kiganjo**  
Programme Officer,  
Institutional Development and Governance

# Girl Child Programme



## OPPORTUNITIES FOR THE GIRL CHILD

Girls in Kenya face many challenges that hinder the realisation of their full potential. These include: female genital mutilation (FGM), discrimination, early marriages, sexual harassment, among others. The KCDF's Girl Child Programme works with various actors promoting the agenda of the girl child in Kenya.

The programme's approach is two pronged: first, through the Girl Child Fund established in the year 2006, KCDF has been growing funds that will address the girl child challenges in perpetuity. Second, through grant making, the organisation supports initiatives that are effectively addressing these challenges.

In 2008/2009, with support from KCDF Friends in the USA, KCDF funded innovative girl child initiatives in West Pokot, Malindi and Mombasa districts. The partner organisations addressed a wide range of challenges including: early marriages, female genital mutilations, child prostitution and poverty. A case in point is Yang'at Girl Child Potential Sensitisation Group, a community based organisation from West Pokot that mobilised leaders, school going children and parents to seek a permanent solution to the challenges of early marriages and FGM as well as work together to rehabilitated girls rescued from these vices. Hope for the Girl Child (Malindi)

and Child Welfare Society (Mombasa), on the other hand, tackled child prostitution and also provided sanitary towels to girls in the two districts. These initiatives directly reached at least 3,000 girls.

Working with The Global Give Back Circle (GGBC), KCDF through grass root partners facilitated scholarships for girls and also supported mentoring and transition programmes for post secondary school graduates. This was intended at supporting the girls to break out of circle of poverty and to cushion them from returning to a life of destitution after graduating from high schools. Our partner organisations included: Starehe Girls Centre (Nairobi), St. Martins Girls Secondary School (Kibarage Slum, Nairobi) and Blessed Generation Schools (Ruiru).

GGBC in partnership with ATE Bank of Greece, provided US \$ 300,000 to support a five year transition process of identified beneficiaries through post secondary phase i.e gap period training (period before admission to universities).

This was intended at enabling the girls to attain professional qualifications that will adequately prepare them for labour market or self employment, build their leadership qualities (Give Back Ethos) and become responsible citizens.

In 2010, KCDF will seek partnership with donors to grow the Girl Child fund to ensure a long term source of funds to tackle the girl child challenges. We shall also be looking for more partners to reach more girls through our grant making component as well as strengthen the capacity of partner organisations to improve their responsiveness on girl child challenges.

**Catherine Kiganjo**  
Programme Officer,  
Institutional Development and Governance

# Early Childhood Development

## THE MOST CRITICAL PERIOD OF HUMAN DEVELOPMENT

is in the first 8 years of life. During this time, the brain undergoes its most dramatic growth and development. Children acquire the ability to think, speak, learn and reason. For this to happen, they need to grow in a supportive environment.

Apart from improving children's health and nutritional status, Early Childhood Development (ECD) programmes, give the children a head start in subsequent education levels. The programmes also promote their smooth and successful transition to primary school and other advanced levels of education.

## RATIONALE BEHIND KCDF INVESTMENT IN ECD PROGRAMMES

In the year 2004 KCDF entered into a partnership with Bernard Van Leer Foundation, to support communities in Malindi, Kilifi, Mwingi and Garissa to implement community based ECD programmes targeting children from the age of 0-8 years. For many years, children from these areas, faced challenges growing up due to poverty and age old traditions as well as ignorance among the inhabitants of these regions. These factors hindered the holistic development of children.

## KCDF ECD INTERVENTIONS IN 2008-2009

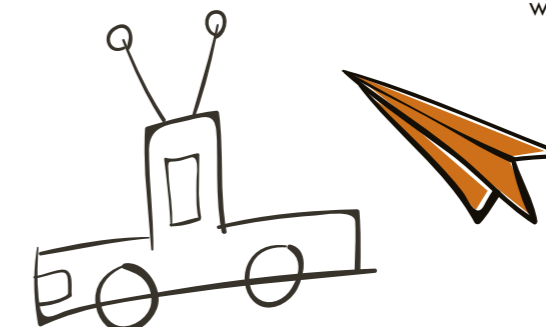
Having supported the 9 partners for five plus years, KCDF made deliberate efforts to help them implement their sustainability strategies to ensure that all targeted children continue to receive ECD services without external support. This will also make room for other needy children in other areas to be supported.

Year 2009, was the critical period that our programme with BVL came to a close. This, therefore, made our efforts to be geared towards supporting our partners to transition to dependency and to be strong, well grounded organizations that would continue to implement ECD programmes in a sustainable manner. This, we did, by training them on various strategies of resource mobilisation to support their initiatives, building partnerships with other stakeholders in the country, documentation, strengthening their governance structures, just but a few.

KCDF also continued to support the scaling up of the initiatives implemented by 9 community based organisations in the aforementioned districts. Through these interventions, at least 80,000 children from the age of 0-8 are directly and indirectly benefiting from the programme. This represents a 20,000 rise in the number of beneficiaries. As a result of this, 25 more ECD centres were established raising the total number to 328. Enrolment of children also grew from 12,283 in the previous year to 14,627 in 2009.

## Milestones of the year

In the year 2009, we saw increased development and usage of local materials for teaching, learning and playing in many ECD. The model of our communities was recognised in the year 2009, at an ECD partner's conference in Senegal.



Food Security Contd from page 12

WAYAAP's story epitomise a case of a community changing its culture to be food secure, since Isiolo is a region inhabited by Cushitic communities who are pastoralists.

Elderly and middle aged women grow 80% of the food that is produced in Africa. This means that the youth, who have the energy that can be harnessed to address food insecurity, are generally apathetic to farming. Through Ustawi, KCDF supported the youth to participate in this technology driven farming. A case in point is a group from Segga, Ugenya district known as Ugenya Community Against HIV Aids(UCAHA). Through the Community Open(our fundraising golf tournament) KCDF liaised with the winners of the tournament to donate a Farmer's Kit to this youth group. UCAHA started growing food that fed children orphaned by HIV/ Aids.

We shall be reaching giving out 100 more farmers kits to communities early next year. What is encouraging is to see more people replicating the technology in areas that we have helped communities to install Farmer's Kits. We believe that Kenyans are very hardworking people who if supported, can drive the country from food relief to food security.

 **Tom Were**  
Programmes Director

Early Childhood Development Contd from page 15

All our partners reinforced their governance and accountability structures. This made some of them to attract additional funding from various organisations. These included: Omega Child Shelter's, an organisation from Mwingi, that received support from Safaricom Foundation, Ngolanya Community Aids Programme's that was supported by the Government to intensify food security initiatives, Malindi Education and Development Association (MEDA) continued to receive support from the local Muslim community and Coastal APHIAII project as well as other partners.

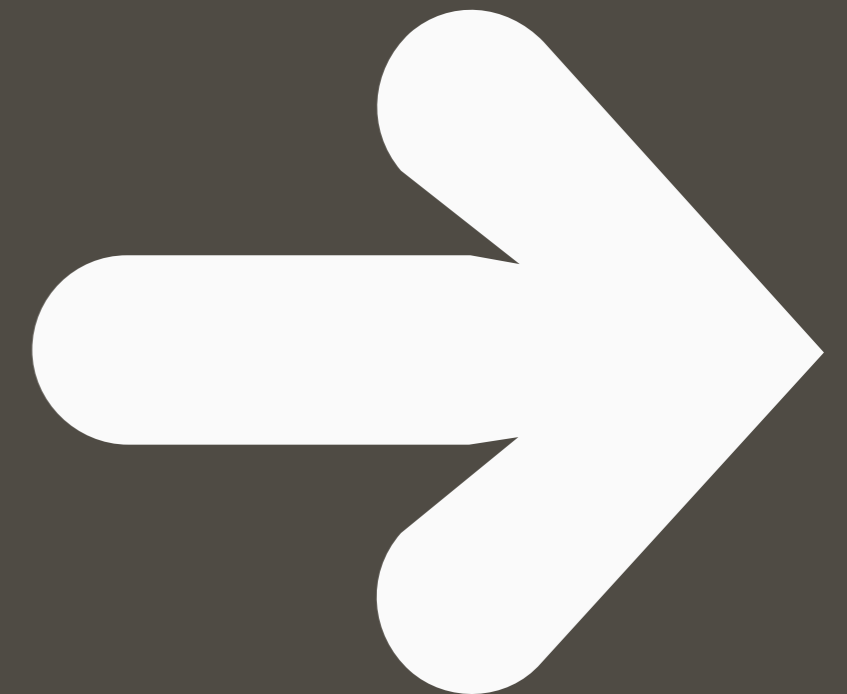
We also documented our work and also trained our partners to do so. We now have a rich repository of reports, materials, photographs, case studies and emerging models of best practices. As we look forward to 2010- 2011, we shall ensure that this knowledge is shared widely. We shall also scale up the transition of project's activities currently going on, and prepare partners adequately for the phase out of the programme, so that they can run it on their own.

Our partners also built structures aimed at helping them address their challenges in a sustainable way. Two of our partners have already established their own endowment funds with KCDF while Omega Child Shelter is now addressing the challenge of nutrition by growing food in a greenhouse donated by KCDF.

We are glad that five years later, we can look back and see communities that appreciate that ECD programmes are integral and strong foundations that defines holistic children's development.

 **Gladys Miriti**  
Programmes Officer,  
Early Childhood Development

# THE NUMBERS





## COMMUNITY ASSET BUILDING:

### WEATHERING THE CHALLENGES OF MARKET DOWNTURNS



As an organisation that champions self-sustainability, KCDF's greatest aspiration is to be a resource that permanently supports grassroots organisations in facilitating their local community development in ways that demonstrate a longer view. To achieve this and with support from its funding partners, KCDF has

in the last 13 years, continued to invest and steadily grow a portfolio of funds whose yields are used to address various community challenges such as access to quality and safe drinking water, better food production methods, education scholarships for orphaned and vulnerable children and other issues prioritised by communities i.e. endowment funds building.

Over the last five years, KCDF has shared its learnings from the endowment building strategies and encouraged more than 20 community organisations, originally beneficiaries of its capacity funding support to identify their priority areas of development and establish their own funds to address those challenges in the long term. Several individuals, families and companies have also bought this

concept and have established legacy funds for community support on issues that they are passionate about.

This arrangement does not take away the uniqueness and individual nature of the challenges, as they are owned by the communities or families. Every year, we all have our expectations of earnings from the funds that guides the way we invest and plan. .

To minimise resource constraints and risks attributed to the external factors in the financial market place, like the recent global credit crunch, KCDF with guidance from leading investment experts has prudently diversified the portfolio therefore minimising the shocks of such eventualities. The risks to our fund builders are therefore minimised through pooling and diversification of investments.

To minimise resource constraints and risks attributed to the external factors in the financial market place, like the recent global credit crunch, KCDF with guidance from leading investment experts has prudently diversified the portfolio therefore minimising the shocks of such eventualities

During the period 2007-2008, Kenya experienced a vibrant financial market place that saw significant growth in value and yields of our investments. However, the post election violence that followed, the prolonged drought and overlap with the global financial melt down, negatively impacted on our investments both in the local market and abroad. The net effect was that our yields reduced by 25%. This eventuality called for adaptation of various survival mechanisms – local solutions.

As part of capacity building of our communities in the past three years, KCDF has embedded local resource mobilisation as the primary means of encouraging 'community give back' in addressing challenges that they experience. Such challenges include: lack of school fees for orphaned and vulnerable children and quality learning materials and facilities for children under 8 years, among others. This came in handy, during the period 2008-2009, where community fund builders were able to look beyond their expected earnings to meet their regular financial requirements.

We saw communities take early initiatives and negotiate with the Constituency Development Fund (CDF) committees and other local bursary programmes to fill anticipated gaps. Others benefited from government programmes such as "Njaa Marufuku Kenya," a programme of Ministry of Agriculture to address funding deficit in addressing food security issues. Some also received support from the private sector to fill gaps in their scholarship programmes while others benefited from shared arrangements with local NGOs in addressing their children's and girl child programme requirements.

A case in point was South Imenti Development Association (SIDA) that successfully negotiated for bursaries to support more than 800 orphaned and vulnerable children to pursue secondary school education. With support from KCDF, Omega Child Shelter, a community based organisation from

Migwani district (Mwingi North), implemented a food security project that supported a feeding programme targeting 30 ECD centres in that region.

Without the continuous persuasion by KCDF and the need for attention to long term planning, proactive responses by communities would not have been realised. By depending on their anticipated incomes and not the yield from their endowment funds enabled the community organisations to only seek support to meet their funding gaps. Leveraging on local resources, therefore, enabled all of us to meet our regular development obligations to our communities without which we would have experienced set backs.

Looking forward, KCDF and its collaborating community fund builders are hopeful that the markets will respond positively to the investments now that the government and other global actors are putting in place, as corrective measures for recovery.

Over the years, we have learnt that planning ahead and recognising local opportunities must be the way to go. That way, we take advantage of the available opportunities to help us pursue long term sustainability, fully aware of the risks.

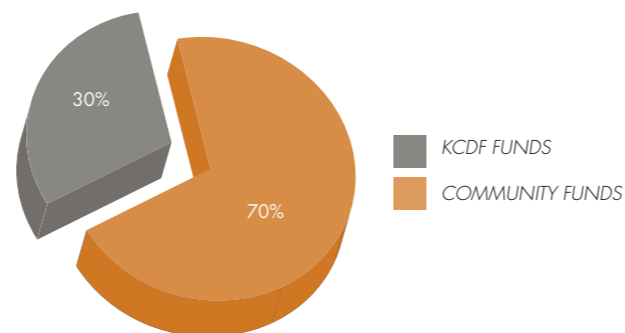
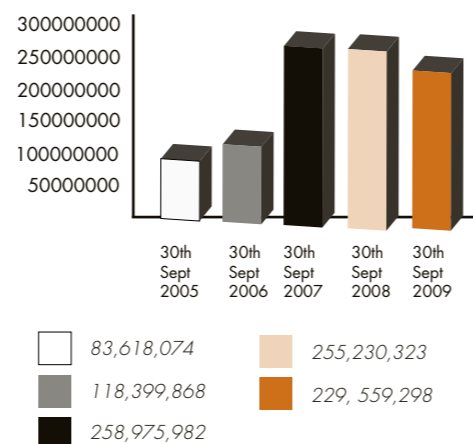
**Tom Were**  
Programmes Director

## Community Fund Developers upto September 2009

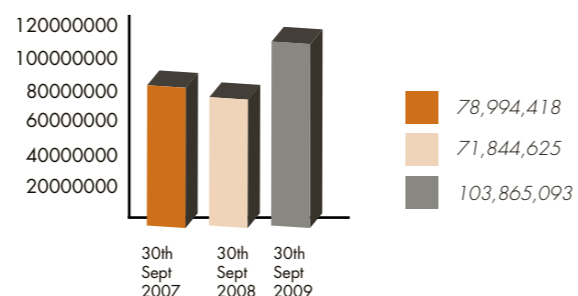
Hope Trust Fund  
 ACK Eldoret region CCS  
 Good Samaritan  
 South Imenti Development Association (SIDA)  
 Othaya Bursary Fund  
 Starehe Girls Centre Fund  
 Makutano Community Development Trust  
 Omega Child Shelter Fund  
 Genesis development Fund  
 Kenya Professional Association of Women in Agriculture and Environment (KIPEWAE)  
 Women Concern  
 Education and Medical Trust Fund  
 Kirima Education Support Project  
 Ngolonya Community Aid Programme  
 Maasai Girls Education Fund  
 Othaya Bursary Fund  
 Lake Region Development Association  
 Support Activities in Poverty Eradication and Health (SAIPEH)  
 Malindi Education Development Association  
 Women Concern  
 Yahya Family Fund  
 Dr. Julia Gitobu Education Fund  
 Kirima Education Support Project

COMMUNITY FUNDS	69,366,301
KCDF FUNDS	160,192,997
<b>TOTAL</b>	<b>229,559,298</b>

### ENDOWMENT AMOUNTS



### GRANT INCOME GROWTH



## FINANCIAL OVERVIEW: 2008-2009

**A BRIGHT YEAR: GRANTS INCOME INCREASE BY 40%**

**T**

he events preceding 2007 general elections did set a depressed mood in the economy, which was worsened by external factors: persistent drought and high energy costs. The global financial melt-down exacerbated the already challenged local environment.

Kenya Community Development Foundation (KCDF) is mainly supported by grants sourced locally and globally. The grant income is meant to supplement community resources through small grants and capacity building. During the year under review the grant income increased by 40% from \$0.938million to \$1.314

Other than the increased funding from the traditional development partners, i.e, Ford Foundation, Japanese Social Development Fund through the World Bank, Bernard van Leer Foundation and Chandaria Foundations, KCDF received new funds from Safaricom Foundation, Global Give Back Circle and the KCDF Friends in the US. This enabled us to support more communities all over the country.

During the same period, the expenditure increased by 18% of which 79% was direct grants to communities and capacity building. The audited accounts also allude that we were able to improve our bottom line from a previous year's deficit of \$92,119 to a surplus of \$139,416. This is commendable.

### INVESTMENT

As the Foundation experienced a revamped impetus, the Trust which receives the Fund builders' contributions and invests them in an endowment fund, experienced a further down turn through fewer injections of new capital and the fall in book value of the asset. However, since the Trust policy on investment is long term, the short term change in value was temporary.

Looking forward in 2010, we expect that the first half of the financial year 2010, will see an improved investors' confidence that will reverse the loss in the endowment value. The government investment in infrastructure and absorption of the economic stimulus programme funds is expected to renew optimism and improve the economy.

From the Trust angle, the future of investment is bright and promising. The Foundation looks forward to sustaining the momentum generated in the last year, both in supporting communities and mobilising resources to realise this goal. We remain positive that the country will smoothly go through the referendum process and that the political climate will remain calm and ideal for investments.

**Francis Kamau**  
Finance and Investment Manager

## Income Statement

FOR THE YEAR ENDED 30TH SEPTEMBER 2009

INCOME	NOTE	2009 KSHS	2008 KSHS
Grant income	3	70,365,911	77,915,937
Endowment Income	3A	2,504,124	—
Donation income	4	134,122	1,344,592
Other income	5	71,844,625	78,994,418
<b>Total</b>		<b>103,865,093</b>	<b>71,844,625</b>
<b>EXPENDITURE – (APPENDIX 1 )</b>			
Administrative expenses		13,474,677	11,566,308
Donor funds disbursed to partner organisations		37,168,401	34,824,146
Capacity building		38,773,551	33,460,621
Fund-raising and communication		4,487,230	1,841,806
Transfers to the Endowment	3A	2,490,637	—
Total		96,394,496	81,692,881
Operating Surplus/Deficit	6	7,470,597	9,848,256
Finance Income – net	8	2,985,623	2,939,332
<b>SURPLUS/DEFICIT FOR THE YEAR</b>		<b>10,456,229</b>	<b>6,908,924</b>

## NOTES TO THE FINANCIAL STATEMENTS FOR THE YEAR ENDED 30TH SEPTEMBER 2009

### 1. Accounting Policies

The principal accounting policies adopted in the preparation of these financial statements have been consistently applied to all years presented, unless otherwise stated.

### 2. Basis of Preparation

The financial statements have been prepared in accordance with the international financial reporting standards under the historical cost convention.

### 3. Revenue recognition

Grants received by the Kenya Community Development Foundation for specific (donor funds) projects and non-specific (general project costs)

#### a) Specific grants:

Grants received for specific purposes are treated as unexpected grants payable and credited to the income and expenditure statement when the activities for which they were provided for have been undertaken.

Specific grants supported by signed funding agreements which have not been received, but costs have been incurred are recognised as grants receivable. The excess of expenditure over receipts are recognised as revenue and included in the financial statements as grants receivable.

#### b) General Grants

Non-specific grants are recognised as income when received

### 4. Interest Income

Interest income is recognised for all interest bearing instruments on an accrual basis taking into account the effective yield on the asset.

### 5. Investments in Unit trusts

Investments in Unit trusts are held for trading and stated at a fair value

### 6. Endowment Funds

Endowment Funds Comprise amounts set aside for permanent restricted community development activities. These are transferred to the KCDF Trust established for this purpose, and invested in interest earning assets. The distribution of returns on investment is done on the principal amount invested and is done after the endowment is audited.

### 7. Translation of Foreign Currencies

Transactions in foreign currencies during the period are translated into Kenya Shillings at the rates ruling at the transaction dates. Assets and Liabilities at the balance sheet date, which are expressed in foreign currencies, are translated into Kenya Shillings at the rates ruling at that date. The resulting differences are dealt with in the income statement in the year in which they arise

### 8. Deferred Income

Assets donated as donations in kind are deferred and recognised as income over the expected lives of the respective assets

### 9. Property and equipment

Property and equipment is stated at cost less accumulated depreciation and accumulated impairment losses where applicable

### 10. Leasehold Land

Payments to acquire leasehold interests inland are treated as prepaid operating lease rentals and amortised over the period of the lease.

### 11. Taxation

The company is exempt from tax

## KCDF Grantees

### October 1st 2008 to September 30th 2009

NB: Exchange rate: Kshs.73 to 1 US \$

#### **FOOD SECURITY PROGRAMME**

These grants are given to communities demonstrating innovative food production initiatives that can be replicated in other parts of the country. These include: greenhouse farming, drip irrigation, water harvesting, conservation and value addition.

#### **Makutano Community Development Association (MCDA)**

Makutano Community Development Association is a community organisation based in Yatta District. Formed in 1997, its current focus areas include education, health, food security. With a grant from KCDF, MCDA was able to construct 10 earth dams and 5 shallow wells. The organisation also purchased and distributed 10 ox-ploughs, make and distribute 50 bee hives. Under the *Ustawi* initiative, MCDA grew water melons, tomatoes, spinach and kales in two greenhouses.

Grant amount Kshs. 731,000 (USD 10,014)

•••••

#### **Omega Child Shelter**

Omega Child Shelter is a community organisation based in Nzeluni, Mwingi. It was founded to address the needs of children, especially those under the age of 8 years. The group received a grant from KCDF to grow tomatoes, spinach and kales. The food will support 210 care givers and

about 2,500 orphans and vulnerable children.

Grant amount Kshs. 543,000 (USD 7,438)

•••••

#### **Women and Youth Against HIV/Aids (WAYAAP)**

This is a community based organisation based in Isiolo, Northern Kenya. It undertakes awareness creation initiatives on HIV/Aids targeting women and youth in the district. It also implements food security programmes including growing food in community gardens, water harvesting, dairy cattle farming, turkey rearing, dairy goats keeping and fish farming. WAYAAP received a grant from KCDF to grow tomatoes, spinach and kales through modern technologies that would enable it to support 13 schools and more than 300 orphans and vulnerable children from 60 households in Isiolo.

Grant amount Kshs. 525,540 (USD 7,200)

•••••

#### **Genesis Community Development Assistance (GCDA)**

Genesis is an NGO based in Mwingi and supports development activities in Migwani division. Apart from its long term engagement in Early Childhood Development (ECD) and related areas, the group has undertaken an improved goat farming project aimed at cross-

ing of local goat breeds to improved breeds with the aim of increasing milk production both for domestic consumption and sale of surplus. The group obtained bucks which are multiplied by selected households and passed to the next group, with a final aim of assisting the whole community to improve their animals. 28 high yielding goats were distributed to 28 farmers. Under the *Ustawi* initiative, GCDA grew tomatoes and kales through modern technology.

Grant amount Kshs. 618,688 (USD 8,475).

•••••

#### **Sustainable Health Education for the Disadvantaged (SHED)**

A Kajiado based NGO registered in 2001 with the purpose through income generating programmes, education and health programmes. It works with women, youth and mixed groups with a focus on the arid and semi arid areas. The organisation received a grant from KCDF to implement dairy goats' projects, grow food and fruits. It purchased and distributed more than 300 dairy goats to orphans and vulnerable children and women, especially those affected by the HIV/Aids scourge.

Grant amount Kshs. 385,600 (USD 5,282)

•••••

#### **Pastoralist Development Organization (PDO)**

Based in Garissa, PDO is a CBO that works in 3 divisions with a focus on promoting Education and Agriculture. The group advocates for adoption of crop farming as an alternative livelihood option to the traditional pastoralist way of life of the residents, which has failed to address their food needs. Through support from KCDF, PDO ventured into rain fed farming of drought resistant sorghum variety among target households in Dagwardei location of Bura division – a programme that reached 40 farmers directly.

Grants amount Kshs. 352,500 (USD 4,829)

•••••

#### **ARTS AND CULTURE CHANGAMOTO ARTS FUND**

Purpose: The grant supports the development of innovative ideas by upcoming artists that target new audiences for Kenya art and improving the livelihoods of artists and their communities.

#### **Abila Creative Centre: Cultural Renaissance Street Festival**

Abila Creative Centre is a Kisumu based community based organisation whose objective is to create an interactive and participatory community learning environment especially for youth and women. The Cultural Renaissance was a one day street festival to celebrate the arts showcasing various art forms.

Grant Amount: Kshs 274,000 (USD 3,753)

•••••

#### **Hot Sun Foundation: Stories from Kibera**

Hot Sun Foundation works with youth for social transformation through media and art in Kibera. Stories from Kibera project invited storytellers from Kibera entered their stories into this competition and shared these with residents in Kibera in an innovative participatory way.

Grant Amount: Kshs 182,000 (USD 2,493)

•••••

#### **Lakareber Atokena Abe: Prison Sex II Video Installation**

Lakareber Atokena Abe, popularly known as Ato Malinda is a visual artist who works to amplify voice of African female through the mediums of painting and conceptual performance. Prison Sex II was a 3 video performance installation at Fort Jesus. The installations featured a performance done by the artist in June of this year on the plight of a woman imprisoned at the Fort during the 19th century to obtain freedom from her marriage vows.

Grant Amount: Kshs 241,483 (USD 3,308)

•••••

#### **Kistretch Theatre International, Kayole: Umoja Drama Fest.**

Kistretch Theatre International supports and coordinates theatre arts in Kenyan communities by providing art groups with information, knowledge and skills in creative and performing art. The Umoja Drama fest provided drama and creative skills to slum theatre grassroots organisations and supporting them to stage quality productions that will attract new and large audience.

Grant Amount: Kshs 228,300 (USD 3,127)

•••••

#### **Maryanne Muthoni; Beautification of City Council Dust bins**

Muthoni is a full time professional visual artist doing own studio work, community arts projects in addition to having exhibited in various art galleries. The project added artistic involvement into the Nairobi City Council beautification efforts by painting council dustbins with environmental messages that beautify the bins and educate the public.

Grant Amount: Kshs 308,292 (USD 4,223)

•••••

#### **Patrick Mukabi; The Blank Canvas Show**

Patrick is a fine artist working mostly as a painter who also does a lot of teaching of art. The Blank Canvas Show was an art project where artists created their work out in public space – in the City Centre – Aga Khan Walk. It was aimed at helping the audience to understand the creative process, enable interaction between artists and art consumers, audience to understand use and application of art materials.

Grant Amount: Kshs 249,750 (USD 3,421)

•••••

#### **Kevin Oduor: Tuko Works**

Kevin Oduor is an excellent sculptor with experience in various community arts projects. He is famous for his Dedan Kimathi sculpture in Nairobi's central business district. Tuko Works project was for the creation of a giant

size plasticine mosquito and flip flop in the centre of town with talented youth.

Grant Amount: Kshs 258, 080 (USD 3,535)

•••••

#### **Ukooflani: Kichaja**

Ukooflani (Upendo Kote Olewenu Ombeni Funzo La Alietuumba Njia Iwepo) is a revolutionary hip-hop movement led by twelve self-proclaimed "soldiers" who use hip-hop music as a tool to wage war against social injustice and inequality in Kenya. Kichaja (Kioo cha Jani) was a platform for showcasing upcoming artists and talent in the area through a two day music concert event flanked by the performing and visual arts

Grant Amount: Kshs 300,500 (USD 4,116)

•••••

#### **Wanuri Kahiu: Pumzi**

Wanuri Kahiu is a Kenyan filmmaker who has directed various films including "Ras Star". Her latest show "From a Whisper" is her first feature film. She has also done a behind-the-scenes documentary for "Catch a Fire"; an American feature film released last year by Universal Pictures Inc. Pumzi is a futuristic science-fiction short film about East Africa in the future. The script was work-shopped in both South Africa and New York and the film was selected as one in 10 from Africa by Focus Features, America. Pumzi premiered as part of the official selection at the Sundance Film Festival 2010.

Grant Amount: Kshs 350,000 (USD 4,795)

•••••

#### **Michael Wambua Soi:**

##### **Dishing Out**

Michael Wambua Soi is a well known Kenyan artist with 14 years experience with numerous solo and group exhibitions both locally and internationally. He is currently working on work that is political and satirical. Dishing out was a series of two exhibitions in which the artist gave away half of the work created to the audience for free and the other half to local organizations

Grant Amount: Kshs 237,500 (USD 3,253)

•••••

##### **Teto Tetuma – Ormoti the Musical**

Teto Tetuma was a finalist musician at the Spotlight on Kenyan Music and best actor Nairobi Province colleges drama festival in 2006/the show as created in conjunction with Kevin Chagala, a percussionist and musician and Adam Chienjo, a dancer and choreographer. "Ormoti the Whole Story" is a story of a community's journey told through music, dance and drama in poetry

Grant Amount: Kshs 274,000 9 (USD 3,753)

•••••

##### **Dance into Space: Contemporary dance film scenarios**

Dance into space is a 10 year old contemporary dance and theatre group with several choreographies that have been presented both locally and internationally. Contemporary dance film scenarios are a collection of choreographic pieces staged in unconventional spaces (CBD & estates) and filmed

at same time. Films were edited into 5 minute pieces for TV and DVD.

Grant Amount: Kshs 252,600 (USD 3,460)

•••••

##### **Intencities Group (ICG): Graffiti Project – Concrete Beauty**

IGG is a graffiti movement which has been running for 2 years now and has a total of 30 members around East Africa. The Concrete Beauty project was for the beautification of a slum (Kibera) by creating graffiti and other art works on the exteriors of 25 houses

Grant Amount: Kshs 223,500 (USD 3,062)

•••••

##### **Sitawa Namwalie – Cut Off my Tongue**

Betty Wamalwa Muragori is a former worker in development for the last 15 years, who 2 years ago, allowed herself to explore her dream and has become an excellent writer and poet. Sitawa Namwalie, 'Cut off my tongue' is a show of dramatized poetry that incorporates spoken poetry, music, dance and movement distilling the essence of life in Kenya.

Grant Amount: Kshs 348,000 (USD 4,767)

•••••

##### **The Imagine Company – Next Level**

The Imagine Company is a coalition of writers, artists and professions working to transform society using modern technology. They run [www.kenyaimagine.com](http://www.kenyaimagine.com), a site on art, opinion, analysis and debate. The Next Level project

was to host quarterly artistic event that exhibits either works in progress or finished progress- showing artistic experiments that people are making.

Total Grant Amount: Kshs 199,500 (USD 2,733)

•••••

##### **Kenneth Mwingi – Junk Arts Trash Bins**

Kenneth works with junk metal to create furniture and sculptures. Junk art trash bins is a collection of 5 trash bins suspended on life size junk art sculptures themed around issues of nationalism and the Kenyan littering culture.

Grant Amount: Kshs 334,600 (USD 4,584)

•••••

##### **Undone Theatre projects: Generation Firimbi**

Undone theatre projects is a group of experienced artistes who stage only local and African work in a bid to build audiences and cultural appreciation for the arts sector. Generation Firimbi was devised from the books: "It's Our Turn to Eat" (Michela Wong) and "Africa Kills Her Sun" (Ken Saro-Wiwa).

Grant Amount: Kshs 349,700 (USD 4,790)

•••••

##### **Stereotypes Three: (John Kamicha, Peterson Kamwathi, Michael Soi, Anthony Okello, Thom Ongonga, Sam Hopkins)**

A group of 6 well-known visual artists came together to work on a series of exhibitions that they titled "Stereotypes". They have since successfully completed Stereotypes I and Stereotypes II which both generated great interest in the arts scene and were

attended by about 300 people. Stereotypes III is the third part of a visual arts interrogation of stereotypes and the roles they play.

Grant Amount: Kshs 349,750 (USD 4,791)

•••••

##### **Story Moja Africa – Matatu from Watamu that drove into the Sea – stage adaptation**

Storymoja Africa was formed by a collective of five writers committed to publishing contemporary East African writing of world-class standard. Their mission is to grow Kenya's reading culture. Matatu from Watamu is a stage production based on Muthoni Garland's children's book by the same title. The book aims to raise the awareness amongst our children on the environment within the sea. The stage production is an interactive show that incorporates art, dance, music, and stage performance performed by children within ages of 5 and 10.

Grant Amount: Kshs 350,000 (USD 4,795)

•••••

##### **EARLY CHILDHOOD DEVELOPMENT PROGRAMME (ECD)**

Purpose: The 2008/2009 grants were aimed at supporting community initiatives towards promotion of smooth and successful transition of children from home to ECD centres/pre-schools and to primary schools. This is in efforts to contribute to the improvement of the situation of young children in Kenya through ensuring their high enrollments, retention and completion of both ECD and primary school educational programmes.

#### **Malindi Education Development Association (MEDA), Malindi**

MEDA utilised grants received from KCDF to support smooth and successful transition of children at all levels in Malindi urban and Magarini divisions, Malindi district. Some of the key activities implemented include: Capacity building for head teachers, Madrasa and ECD teachers, committees and lower primary school teachers on smooth and successful transition, support large, model ECD centres to acquire child friendly facilities like chairs and desks. Other activities included: support the development of teaching, learning and play materials, training ECD and primary teachers on child centred methodologies, supporting the process of documentation and sharing information on the impact of ECD, success stories and best practices in ECD Programme implementation, coordination of ECD/Child Rights network's activities in Malindi district and monitoring and supervision of ECD work. MEDA is reaching out to 124 ECD Centres where 7,440 children from 1,498 households are directly benefiting from ECD services.

Grants Amount: Ksh 1,579,910 (USD 21,643) inclusive of Malindi district ECD/Child right's network's support grants.

•••••

##### **Omega Child Shelter (OCS), Mwingi**

Omega Child Shelter used the grants received from KCDF to support smooth and successful transition of children at all levels in Migwani and Mwingi Central divisions of the larger Mwingi district. Some of the key activities implemented include: capacity building of ECD, lower primary school teachers,

head teachers, ECD and school management committees on successful transition, supporting large "model" ECD centers to acquire child friendly chairs and desks, supporting supplementary feeding of children in identified large 6 ECD centres, training on resource mobilisation for community groups and ECD committees, supporting the process for documentation and sharing ECD programme's work through annual newsletter and a website and set up of demonstration plots to educate community on food security issues. The organisation has also been coordinating ECD/Child rights network's activities in the larger Mwingi district and is also currently supporting 35 ECD centres which are directly serving 2,104 children from 568 households.

Grant Amount: Kshs 1,633,540 (USD 22,377) inclusive of Mwingi Network support grants.

•••••  
**Appropriate Sustainable Pastoralist Empowerment for Community Transformation (ASPECT) Project Garissa/Lagdera**

Grants to ASPECT Project have supported the enhancement of community and stakeholder's capacities towards promotion of smooth and successful transition of children at all levels in Daadab, Jarajila and Liboi divisions in the larger Garissa district now referred to as Lagdera district. Some of the key activities supported by this grants include: capacity building of ECD, lower primary school teachers, head teachers, ECD and school management committees on successful transition, training for ECD and primary school teachers on child centred methodologies and emerging

approaches in ECD, supplementary feeding in supported ECD centres, support of "model" ECD centers to acquire child friendly chairs and desks and water tanks so that the children get safe drinking water, supporting ECD Centres to develop learning and playing material ECD teachers, \*duksi teachers and committees, There is intensive community mobilisation to improve men's participation in ECD programmes. ASPECT is currently supporting 18 ECD centers where 1,080 children from 293 households are directly benefiting from various ECD programmes.

Grant Amount: Kshs 1,055,720 (USD 14,462)

•••••  
**Woman Kind Kenya (Wokike), Garissa**

The grants received supported the promotion of smooth and successful transition of children at all levels in Garissa Central division, Garissa district. Some of the key activities implemented include: Community mobilisation and capacity building of key programme implementers to promote smooth and successful transition of Children at all levels, training of ECD and primary school teachers on child centred methodologies and emerging approaches in ECD, supporting supplementary feeding of large ECD centres, support "model" ECD centres to acquire child friendly desks, chairs and water tank so that children can get clean drinking water, supporting ECD centres to develop learning and playing materials for ECD teachers and duksi teachers and committees, supporting the organisation to participate in the Day of the African Child commemoration event and monitoring of programme's activities. WOKIKE is currently supporting

12 ECD centres where 728 children from 186 households are directly benefiting from ECD services.

Grant Amount: Ksh 943,580 (USD 12, 926)

•••••  
**Forum for Orphans- Malindi (FOM), Garissa**

Grants received supported the promotion of successful transition of children at all levels in Malindi rural, Marafa and Lango Mbaya divisions in the larger Malindi district. Some of the key activities undertaken include: community mobilisation and capacity building for ECD, lower primary school teachers, head teachers, ECD and school management committees on Successful transition, training the youth on life skills, child development and transition, training functional HIV/AIDS support groups on income generating activities management and support establishment of the same, supporting supplementary feeding programmes for children in identified ECD centres, supporting "model" ECD centers to acquire child friendly desks and chairs, supporting children health outreach campaigns on immunizations, growth monitoring, prevention of mother to child transmission of HIV/Aids and supporting vitamin A administration, setting up demonstration plots to educate community on food security issues, resource mobilisation and monitoring of programme's activities. FOM is currently supporting 28 ECD centers where 1869 children from 404 households are directly benefiting from various ECD services provided.

Grant Amount: Kshs 1, 258,830 ( USD 17,244)

•••••  
**Women Concern Kenya (WCK), Garissa**

The organization's utilised grants received to promote smooth and successful transition of children at all levels in Sankuri and Central divisions, Garissa district. Some of the key activities undertaken during the stated period include: community mobilisation sensitisation to support successful transition initiatives, supporting supplementary feeding for 7 ECD centres, supporting the development of play and learning materials, support equipment of model ECD centre, supporting integration of ECD Programme and Duksi system, enhancing child participation and resource mobilisation for endowment fund building with KCDF. Currently, WCK is supporting 15 ECD centres where 638 children from 183 households are directly benefiting from ECD programme's services.

Grant Amount: Kshs 1,092,480 (USD14,965) inclusive of Garissa ECD/Child Rights network grants.

•••••  
**Mission for Community Initiative and Development (MICODE), Malindi**

ECD grants for the period under review to MICODE supported community initiatives towards promotion of successful transition of children at all levels in Magarini divisions in larger Malindi district. Some of the key activities undertaken include: community mobilisation and sensitisation on successful transition issues and clarification of their roles, resource mobilisation and Training of Trainers(TOT), supporting supplementary feeding programmes in selected 5 ECD cen-

tres, supporting 2 large ECD centres to acquire water tanks and child friendly desks and chairs, Training of Trainers on documentation and reporting of ECD/child rights issues, supporting the process of documentation and sharing information on success stories and best practices in ECD programme. MICODE is currently supporting 37 ECD centres where 2669 children from 548 households are directly benefiting from ECD services

Grant Amount: Ksh 1,064,400 (USD 14,581)

•••••  
**Muongano CBO, Kilifi district.**

Grants were utilized in supporting community initiatives towards promotion of successful transition of children at all levels in Vitengeni division, Kilifi district. Some of the key activities undertaken include: Support 4 ECD teachers undergo Dicece course training, Capacity building for ECD teachers, TOTs, committees and lower primary school teachers on smooth and successful Transition, Intensify community health education campaigns, Support equipment and provision of safe water to selected large ECD centers, support feeding programmes in selected 7 ECD centres, supporting the documentation and dissemination process on the success stories and best practices in ECD programme through annual newsletter and streamlining and carrying out routine monitoring and supportive follow up of ECD programme activities. Muungano is currently supporting 18 ECD centres where 1275 children from 278 households are directly benefiting from ECD services.

Grant Amount: Ksh 866,600 (USD 11,871)

*Duksi in the Northern Kenya is the same as Madrasa in Coast province, a programme in Islam where every child from Muslim family is supposed to learn and understand the Koran and the Islamic religion. This takes about 3 years meaning that without integration, children join formal ECD programme at the age when they are supposed to be in primary school.*

**YOUTH DEVELOPMENT PROGRAMME**

**Purpose:** The grants aim to strengthen inclusion, participation and empowerment of young people at the community-level and national development processes in Kenya.

**Kamuga Youth Group**  
Kamuga Youth Group, a registered self help group, works in Murang'a South district to create opportunities and jobs through value addition in agri-business, specifically poultry, mushrooms, fruit juice production and banana wine production and sale. KYG got a grant from KCDF that benefited 40 young people directly, providing them with work and income. It is anticipated that Kamuga will improve its governance structures (emerge a better managed organisation) with clear investment strategies and plans.

Grant Amount: Ksh 579,600 (USD 7,932)

•••••  
**Kimahuri Youth United Self Help Group**

Established in 2006 with an aim of alleviating poverty through job creation and environmental conservation. Its current activities include sericulture farming; trout fish farming, tree nursery

establishment and training in sericulture. The group is implementing a 12 month project, 'Sericulture Farmer Recruitment', that aims to create employment and generate income through silk worm rearing – "sericulture". It will directly benefit 30 households and increase interest in young people in silk worm rearing as well as increasing the number of out-growers to 30. The youth participants will benefit from expert knowledge on sericulture processing, marketing, cooperative development, eco-tourism and business planning to boost their entrepreneurial skills.

Grant Amount: Ksh 956,600  
(USD 13,104)

•••••  
**House of Talent (HOT)**

HOT is a community based organization formed in 2004. It is led by young people from Mnarani in Kilifi District and works to explore and nurture talents through performances. The group's mission is to empower youth in Kilifi District economically through school out-reach programmes, organizes family shows, educating the community on HIV&AIDS, drug abuse, consequences of early marriages, unplanned pregnancies, and importance of education; and road shows for promoting commodities for a fee. HOT is implementing a 12 month project whose main activities include: group dynamics, training on leadership and governance, financial management, resource mobilization & documentation, business plan development, communication, procurement of equipment, production of organizational IEC materials & manuals, etc. It is anticipated the HOT would emerge a stronger community based youth group that can positively

and effectively impact on the lives of over 3000 youth in Kilifi District.

Grant Amount: Ksh 613,000  
(USD 8,397)

•••••  
**Moving the Goal Post (MTG)**

MTG is a community based organization formed in 2001 in Kilifi District to provide an opportunity for young girls to fulfill their potential through sports. Its current activities include promoting football for girls, developing leadership through football, training coaches and training girls in First Aid, provision of reproductive health and HIV/Aids information and services to adolescent girls and provision of access to education to girls through leadership award schemes. MTG is implementing a 12 month project 'Tumanyane' that aims to increase the level of parental financial and moral support to their girls who are involved in MTG activities in Kilifi and Kaloleni Districts by building partnerships and providing information about MTG Goals and activities. The project targets to reach at least 300 parents, 59 heads of schools and 200 MTG girls household. It is expected that there shall be increased support by parents, guardians and teachers in the greater Kilifi District to girls and encourage their participation in sports and other self empowering initiatives.

Grant Amount: Ksh. 1,269,800  
(USD 17,394)

•••••  
**Eco Ethics International**

ECI is an NGO registered in 2002, working investigate, demonstrate, promote and enhance harmonious relationships between human communities with their natural environmental re-

sources building on the principle of sustainability. The group is implementing a 12 months project "Youth Enterprise Development and Skills Building(YED) in Peri Urban and Informal Settlements of Mombasa " that aims to build skills and capacity of youth in Peri-urban and informal settlements in Mombasa in order to initiate, develop and sustain socio economic development interventions at the individual, local and national level. The project targets to reach at least 10 youth groups and over 400 individual youth in Mombasa. It is anticipated that there shall be an increased appreciation of young people of environment friendly enterprises and linkages of youth and youth organization to financial agencies to fund eco-enterprises and ultimately funding for youth led eco-enterprises for improved economic livelihood.

Grant Amount: Ksh. 1,165,700  
(USD 15,968)

•••••  
**Malindi Education and Development Association (MEDA)**

MEDA is community-based organization whose mission is to promote the recognition and appreciation of the importance and the role of education in development by working together as residents of Malindi to ensure access to education at all levels. MEDA is implementing a 12 month project "Building our Nation, shaping our communities, youth in development in Malindi District." This project targeted at least 5000 young people (3000 women and 2000 men). Specific project activities included public motivational talks by successful youthful young women in the society, inter generational dialogue forums, mapping and zoning of youth

(serving )organizations in Malindi and publication of the same and documentation of MEDA's work over years with young people

Grant Amount: Ksh. 962,000  
(USD 13,178)

•••••  
**Pastoralist Girls Initiative (PGI)**

PGI is an NGO registered in 2008. It works with marginalized pastoralists in North Eastern Province in an effort to promote sustainable development by enhancing pastoralist capacities through integrated development approaches. The organizations focal areas include; education, health, campaigns and advocacy. PGI is implementing a 12 month "Pastoralist Youth Empowerment" project that aims at maximising the full potential of the youth through participatory engagement that serves their needs, aspirations and above all ensuring sustainability of their programmes and building a better future. Key interventions include leadership and life skills training, training on entrepreneurship and promoting and harnessing ethnic diversity to enhance cohesion among the youth. This project targets to reach to at least 200 youth directly by the end of project period.

Grant Amount: Ksh. 945,250  
(USD 12,949)

•••••  
**Gem Youth Network**

GYN is a newly registered network of youth groups from the wider Gem District. Established in 2009, it currently has a membership of 13 youth groups. Its mission is to enhance cooperation and networking among Gem Youth Groups to foster integrated service

delivery and to ensure a common approach towards development and governance issues in the district. GYN is implementing a 12 month "Youth Empowerment and Leadership" project will improve leadership skills and to encourage better, efficient and result oriented service provision by the respective member youth groups. The Network will facilitate a Training of Trainers(TOT) training sessions to build skills in facilitations, team Building, leadership, conflict resolution, report writing; strategic planning, monitoring & evaluation; proposal writing training, communication and lobbying skills. The grant will enable the member youth groups improve their institutional structures as membership organizations. It is anticipated that through the groups, the project will reach 4,000 youth in Gem District.

Grant Amount: Ksh 809,370  
(USD 10,377)

•••••  
**Tears Group Kenya**

Tears Group Kenya is a youth-led, youth-serving organization registered in 2003 in Nakuru District as a cultural group. The organization's mission is to 'create awareness and involvement of the youth in creation of sustainable solutions through socio economic empowerment'. Tears Group uses creative arts and drama as its main means of intervention. The Group provides training in creative arts, youth groups' capacity development, mentorship and life skills; conducts community outreaches, peer education and focus group discussions on reproductive health and civic education. Tears Group is implementing a 6 month institutional strengthening project dubbed

'Pambazuko' that aims to strengthen its institutional systems and structures. Core project activities include: strategic plan development, business plan development and development of operational manuals (financial, human resource, procurement, volunteer policy as well as monitoring and evaluation tools). It is expected that the organization shall be more strengthened and serve young people more efficiently with all systems in place.

Grant amount: Kshs 786, 700  
(USD 10,777)

•••••  
**Genesis Arts Creations (G.A.C)**

GAC is an artistic driven initiative based in Nakuru town which addresses social, economic, health and governance issues in the community through use of Art and Theatre in Participatory Interactive Forums Model (P.I.F.M).The organization was founded in 2006 and registered in June 2007 under the department of culture with the then ministry of Gender, sports culture and social services as a Community Based Organization (CBO). The organisation is implementing a 12 month project dubbed 'Zinduka' that aims to strengthen organization's institutional and programmatic development through putting in place and revising necessary Policies which affects day to day running and long term plans of the organization. Key interventions include revision/ formulation of policies, strengthening of organizational systems, exchange visits with different organization with similar programmatic focuses and undertaking an Arts & Leadership camp. This project aims to reach at least 40 youth and 10 teachers directly and about 2000

others indirectly. It is expected that relevant organizational systems and procedures shall be set up inclusive of the strategic plan, Human resource and Financial Manual as well as office equipment.

Grant Amount: Ksh 938,250  
(USD 12,853)

•••••  
**Trans Nzoia Sports Association (TYSA)**

TYSA was established in 2001 and is registered as a Community Based Organization (CBO). TYSA mission is to inspire and empower youth through sports. TYSA is implementing a 12 month project dubbed 'Tunaweza Girls Project' that aimed to enhance girls' active participation in their growth and development through sports and equipping them with relevant skills, knowledge and information so as to make informed choices. Key interventions include provision of mentorship and follow ups for girls, training in child, youth and women's rights, reproductive health, peer education, business development skills and career counseling. They will also conduct an exchange visit to Moving The Goal Post (MTG) in Kilifi with an aim of broadening perspectives and networks of young girls and women. Key expected outcomes include reintegration of teen mothers into forms of discipline and learning processes, intergenerational community based support for vulnerable young women, confident and empowered girls/young women to face the future and make informed choices and broadened perspectives and networks of girls/young women so they don't feel alone with their problems. The project targets to

reach 200 young women directly, 6 primary schools youth and 3 secondary schools.

Grant Amount: Ksh 1,366,800  
(USD 18,723)

•••••  
**Youth Agenda Consortium (now Youth Consortium Kenya), Uasin Gishu District**

Youth Consortium Kenya is a youth-led organization registered as a CBO in 2006. The Consortium's mission is to bring youth together by tapping their talents and skills and involving them in the development activities in and out of the community. They achieve this include through sports and provision of capacity building training, undertaking research, lobbying and advocacy on issues affecting young people. Youth Consortium Kenya received a top-up grant to enable it implement its activities following successful application to HP-UNIDO application GET IT programme in which it 22 laptops and laptop stands, computer software and wireless connectivity accessories worth approximately Ksh. 3.5 million. This was to enable it equip its training centre to promote entrepreneurship and IT skills development among youth in Eldoret and its environs. This project targeted 160 young people in its initial phase.

Grant Amount: Ksh 200,000  
(USD 2,740)

•••••  
**Dhamira Moja Youth Group**  
Dhamira Moja Youth Group is a youth group established in 2003 in Busia District. The group works with an aim of empowering members both socially and economically. The group

is implementing a 12 month project dubbed 'Kijana Poa Project' that aim to improve the livelihoods and well being of young people in Busia district by building their capacity to respond to national development and cohesion needs. Key project activities include training programmes on entrepreneurship, leadership & governance, lobbying and advocacy and creative talent promotion, talent promotion festival and enterprise development. Through the project, it is expected that the capacity of member youth groups and individual youth will be developed and that their interest in national development and participation will be bolstered. They will also be able to apply principles of active non-violence to lobby and settle conflicts as well respond effectively to accountability demands by local leaders. The youth will also be economically empowered as by applying for credit facilities in their localities as well as expand their enterprises. The project targeted at least 4000 youth in Busia district directly.

Grant Amount: Ksh. 967,500  
USD (13, 253)

•••••  
**GIRL CHILD FUND FUNDED BY THE FRIENDS OF KCDF - USA**

Purpose: This is a national initiative aimed at providing a permanent approach to addressing the many challenges encountered by the girl child in Kenya. This initiative born out of the recognition that the girl-child is in many instances not able to exploit their full potential mainly due to inhibitive cultural practices and beliefs; among other factors. KCDF received a grant from

the friends of KCDF USA amount to U\$ 22,000, as their contribution to this initiative. This grant aims at supporting pilot, innovative and creative girl-child initiatives that have a high likelihood of being replicated or scaled up, in three selected marginal provinces in Kenya over a period of one year. The following are the grantees who received the funds;

**Yang'at Girl Child Potential Sensitization Group - Kapenguria, West Pokot**

The organization tackles the challenges of negative cultural practices that affect the girl child in Pokot areas. It utilised the funds to disseminate information on girl child rights through community mobilization and sensitization, established a rescue system to help young girls who fall victim of negative cultural practices, i.e, victims of FGM and early marriages and conducting workshops and trainings on the effects of negative cultural practices and HIV/AIDS. Through a grant from KCDF, Yang'at: mobilised and trained 12 leaders(chiefs, church elders, elders and women leaders), 784 school going children, 297 community members on HIV/Aids, dangers of FGM, early marriage and the need to take care of the girl child.

Grant Amount: Kshs. 500,000  
(USD 6,849)

•••••  
**Hope for the Girl Child - Malindi**  
The organization focuses on empowering the girl child to participate and enjoy equal opportunities for their development in Watamu Location, Malindi division in Malindi District. The girl child faces challenges of early/forced

marriages, child trafficking, Child parenthood, child prostitution and missing school during the menstruation period due to lack of sanitary pads. Poverty and ignorance have played a significant role towards this destruction. The organization utilized the funds to train trainers on gender education and the importance of girl child, capacity building of management/board member on management, financial and report writing skills, hold forums with girls in schools and those outside school and provide them with sanitary towels, sensitization meetings on gender education and the importance of girl child and programme support. Through this grant, Hope for Girl Child trained 20 Trainers of Trainers (TOT) on gender education and the need to protect the girl child, organised 7 discussion forums on children's rights in Gede, Dabaso and Watamu Primary Schools whereby 1838 school girls, 286 out of the school and 30 teachers were reached. The organisation also managed to distribute sanitary towels to 915 girls within the region. It also sensitised 826 community members on gender education in Watamu's Chief's camp, Timboni, Chembe and Jimba trading centres, Watamu, Dongokundu and Kanani villages.

Grant Amount: Kshs. 480,000  
(USD 6,575)

•••••  
**Child Welfare Society - Mombasa**

The organization objective was to enhance protection of the girl-child especially those that are vulnerable and likely to join commercial sex trade due to poverty in Kaa Chonjo area in Mombasa. It also aimed to empower

the girls through skills development so as to be self reliant and empower the community through educational awareness on issues of health and environment; counselling and project identification and sustainability. The organization utilized the funds to undertake capacity building of local community volunteers towards the elimination of commercial sex exploitation, the production of IEC materials campaigning against commercial sex exploitation of girls and withdraw, rehabilitate, reintegrate girls aged between 6 - 18 years from venturing into commercial sex. Through this grant, the organisation: identified, enrolled and admitted 16 girls to Tudor and Mary Cliff Primary Schools (this also included school uniforms), equipped 17 girls with computer skills. 97 participants (girls, community leaders and parents) were equipped with knowledge on life skills, adolescence challenges and children's rights,

Grant Amount: Kshs. 488,000  
(USD 6,685)

•••••  
**FUNDED BY GLOBAL GIVE BACK CIRCLE**

Purpose: The program focuses on Transition of Post-secondary school graduates, to College or University through to societal launch. The grants supports identified destitute girls with a will be break out the circle of poverty so that they no longer return to a life of destitution after high school graduation. It gives the girls an opportunity to integrate with a mentor to realize their full potential, develops the girls to become a mentor and benefactor for the next generation of girls and provides

an opportunity to develop valuable skills necessary in meeting the various challenges in their future career. The beneficiaries are from two institutions namely Starehe Girls Centre and St Martins Girls Secondary School in Kibagare Slums. The commitment for the support of this work is U\$ 300,000 donated by ATE Bank of Greece as a Clinton Global Initiative commitment.

#### Starehe Girls Centre

Starehe Girls has 24 beneficiaries in the programme. 22 of the beneficiaries have received additions to the public universities to study various programs. 2 students are pursuing college education. During the period under review the institution received funding to support the Gap period i.e., the period before admissions to the university to train on ICT skills, accounting, business skills and life skills. In addition the funding provided accommodation facilities and a renovated a laboratory which was equipped with computers to provide a first class facility for training at the institution.

Grant Amount: Kshs. 4,875,947

#### St Martins Girls Secondary School

St Martin's has 6 beneficiaries in the programme, who were admitted to various colleges to undertake diploma courses in Hotel Management, Community Development and Accounting. These courses take a period of 2 to 3 years to complete. During the period under review the institution received funding to support IT skills training, tuition and examination fees to the various colleges, hostel accommodation, transport and clothing allowance,

stationery and pocket allowances.

Grant Amount: Kshs. 1,805,549

#### EDUCATION SCHOLARSHIPS

Purpose: The grant provides an chance for needy boys and girls in Kenya who are orphans or destitute to attend secondary school and therefore have an equal opportunity.

KCDF partners with local community-based organizations, NGOs and schools that offer mentorship to students who meet the set criteria throughout Kenya.

#### KCDF Scholarship Support

#### Actina Initiative Self Help Group

Boys (0), Girls (3)  
Grant Amount: Kshs. 100,134

Edumed Trust  
Boys (5), Girls (4)  
Grant Amount: Kshs. 234,010

#### Genesis Community Development Association

Boys (2), Girls (2)  
Grant Amount: Kshs. 96,791

#### Kenya Orphans Rural Development Programme

Boys (4), Girls (0)  
Grant Amount: Kshs. 155,263

#### Kenya Professional Association of Women in Agriculture and Environment (KEPAWAE)

Boys (0), Girls (7)  
Grant Amount: Kshs. 260,811

#### Makutano Community Development Association (MCDA)

Boys (1), Girls (2)  
Grant Amount: Kshs. 71,700

#### Malindi Education Development Association (MEDA)

Boys (4), Girls (3)  
Grant Amount: Kshs. 235,731

#### Masaai Aids Awareness Programme (MAAP)

Boys (1), Girls (8)  
Grant Amount: Kshs. 231,643

#### Omega Child Shelter

Boys (4), Girls (3)  
Grant Amount: Kshs. 235,731

#### Soin Integrated Development Project - Bomet.

Boys (0), Girls (3)  
Grant Amount: Kshs. 94,801

#### Rabour Sinaga Area Development Trust

Boys (1), Girls (2)  
Grant Amount: Kshs 36,827

Starehe Girls Centre  
Boys (0), Girls (1)  
Grant Amount: Kshs. 65,000

#### Support Activities in Poverty

Eradication and Health (SAIPEH)  
Boys (4), Girls (3)  
Grant Amount: Kshs. 108,501

Total Funds Disbursed: Kshs. 1,855,865.  
Total Number of Boys: 26  
Total Number of Girls: 41  
Total Number of students: 67

#### Chandaria Foundation Support

The following is a summary of beneficiaries students funded directly each student received a partial grant of Kshs. 12,000 per annum as a contribution to the secondary school fees;

Form 1: Girls: 2	Boys: 3
Form 2: Girls: 2	Boys: 3
Form 3: Girls: 2	Boys: 3
Form 4: Girls: 9	Boys: 16

The following organizations each received partial scholarships to disburse to student. Each student received Kshs. 12,000 per annum.

#### Kenya Network of Women with AIDS (KENWA)

Boys (0), Girls (4)  
Grant Amount: Kshs. 48,000

#### Kenya Professional Association of Women in Agriculture and Environment (KEPAWAE)

Boys (0), Girls (4)  
Grant Amount: Kshs. 48,000

#### Edumed Trust

Boys (2), Girls (2)  
Grant Amount: Kshs. 48,000

#### Pastrolist Integrated Support Program (PISP)

Boys (3), Girls (1)  
Grant Amount: Kshs. 48,000

#### Genesis Community Development Assistance

Boys (2), Girls (2)  
Grant Amount: Kshs. 48,000

#### Good Samaritan Children's Home

Boys (3), Girls (1)  
Grant Amount: Kshs. 48,000

#### Support Activities in Poverty Eradication and Health (SAIPEH)

Boys (2), Girls (2)  
Grant Amount: Kshs. 48,000

#### St Martins Girls Secondary School

Boys (0), Girls (4)  
Grant Amount: Kshs. 48,000

#### Makutano Community Development Association (MCDA)

Boys (2), Girls (2)  
Grant Amount: Kshs. 48,000

#### Lake Region Community Development Programme

Boys (2), Girls (2)  
Grant Amount: Kshs. 48,000

#### Turkana Basin Institute Limited

Boys (2), Girls (2)  
Grant Amount: Kshs. 48,000

#### Rattansi Education Trust

Boys (2), Girls (2)  
Grant Amount: Kshs. 48,000

#### Streetnizers Ministry Transformation Centre

Boys (4), Girls (0)  
Grant Amount: Kshs. 48,000

#### Malindi Education Development Association (MEDA)

Boys (2), Girls (2)  
Grant Amount: Kshs. 48,000

#### Edumed Trust

Boys (4), Girls (2)  
Grant Amount: Kshs. 48,000

#### Total Funds Disbursed:

Kshs. 1,111,500.  
Total Number of Boys: 46  
Total Number of Girls: 41  
Total Number of students: 87

## BOARD MEMBERS AND TRUSTEES

Eng. Isaac Wanjohi (Trust Chairman)  
Prof. Mohammed Abdullah (Board Chairman and Trustee)  
Nuriya Farah (Board member)  
Mr. Edmund Mudibo (Board Member)  
Mr. Amar Kantaria (Board Member)  
Dr. Vijoo Rattansi (Trustee)  
Mr. Arthur Namu (Board member)  
Mr. Kibuga Kariithi (Trustee)  
Ms. Atia Yahya (Board member and Trustee)  
Ms. Eunice Mathu (Board member)  
Mr. Donald Kaniaru (Trustee)  
Ms. Janet Mawiyoo (CEO and Ex Officio Board member)

## KCDF STAFF

Al Kags  
Head, Marketing and Partnerships  
Catherine Kiganjo  
Programme officer, Institutional Development and Governance  
Dennis Gitari  
Accounts Assistant  
Francis Kamau  
Finance and Investment Manager  
Gladys Miriti  
Programme Officer, Early Childhood Development  
Janet Mawiyoo  
Chief Executive Officer  
Judith Mulinge  
Communications Intern  
Lynnette Micheni  
Programmes Intern  
Mercy Maneno  
Executive Assistant  
Mutheu Mbondo  
Programme Officer, Arts and Culture  
Oliver Konya  
Logistics Officer  
Peter Wechuli  
Programme Assistant, Youth Development Programme  
Rosalid Ndoro  
Grants Management Accountant  
Simon Wachira  
Communications Officer  
Sonia Rasugu  
Co-ordinator, Youth Development Programme  
Tom Were  
Programmes Director

## 2008/2009 FUNDING PARTNERS

Ford Foundation  
The World Bank / Japan Social Development Fund  
Bernard van Leer Foundation  
Aga Khan Foundation  
Global Give Back Circle (GGBC)

## CORPORATE PARTNERS

Chandaria Foundation  
Safaricom Foundation  
Friends of KCDF, USA

## COMMUNITY OPEN CORPORATE SPONSORS

Acer Kenya  
Air Kenya  
AMIRAN Kenya  
Kickstart  
Café Maghreb at the Nairobi Serena Hotel  
CFC Stanbic Bank Ltd  
Chandarana Supermarkets  
Chandaria Foundation  
Commercial Bank of Africa  
Export Trading Co. Ltd  
General Accident Insurance Co. Ltd  
Heritage Hotels  
Kaniaru and Kaniaru Advocates  
KCB Foundation  
Lion of Kenya Insurance Co. Ltd  
Mabati Rolling Mills  
Octagon Pension Services  
Old Mutual Asset Managers (K)  
Pinnacle Projects  
Prime Bank Ltd  
Safarilink Ltd  
Stanbic Investment Management Services  
Serena Hotels  
Sarova Hotels  
Tamarind  
Tononoka Steels  
Wines of the World  
Zucchini Greengrocers

## THE COMMUNITY OPEN 2009 – GOLFERS

K. Nkomani  
N. Ithondeka  
Amos Kosgey  
Rohit Shah  
Ken Wamae  
Dr. Gichuhi  
Cheryl Desouza  
Ardina Patel  
M. Kapila  
G. Kapila  
S. D'Souza  
P. Kaumbutao  
M.N. Kanyi  
Robert A. Porter  
George Mwaura  
Susan K.  
J. Koros  
D. Nyaga  
Rajik Patel  
Kepha Bosire  
Romal Shah  
Hirji Shah  
Kiran Shah  
Mehul Devani  
J.W. Kung'u  
M. Laxmi  
Abiero J.O  
Tony Nasirembe  
J.T. Maina  
A. Islamshah  
T. Kuria  
Dan Owino

E.G. Osewe  
Dr. Evans Kidero  
Peter Kanyago  
Joel Karubiu  
Dan Owino  
Sam Onyango  
Kungu Phillip  
Joseph Rono  
Ann Njuguna  
James Chege

## INDIVIDUAL CONTRIBUTORS

Eunice Mathu  
Edward Mugo  
George Mwangi Kariuki  
Peter Kanyago  
Sonia Rasugu  
Janet Mawiyoo  
Francis Kamau  
Catherine Kiganjo  
Al Kags  
Miss Hassanali  
Sheikh Abdullah  
Impact by Design  
Wanjeri Gakuru  
Zafir Din  
Maina Rosemary Wanjiku  
Bishop Mutemi  
Miss G McKibbin  
Engineer Wanjohi  
Njuraita Enterprises  
Mrs Sheik  
Sikom Joseph Akoule

Thank you for sponsoring the Community Open 2009



# OUR VISION

All Kenyan communities giving and working together in a prosperous nation.

# OUR MISSION

KCDF promotes sustainable development of communities through social investment, resource mobilisation, endowment building and grant making.

# OUR BELIEFS

As a Foundation and in tackling the questions of poverty eradication and development, we believe that:

- Every human being has the potential to make a positive difference in their own lives and that of others around them.
- People's participation, ownership and control are vital to equitable and sustainable development.
- Every community has assets to use towards its own well-being as well as for national development.
- Meaningful development focuses on people, brings freedom, space, creativity and transformation.
- The poor are capable of achieving long-lasting improvements in their lives.
- Civil society has potential to influence social, economic and political change

# OUR VALUES

**Dignity and rights of every human being:** We attach great value to the dignity and rights of every human being regardless of ethnicity/race, religion, gender, age, physical or mental disposition.

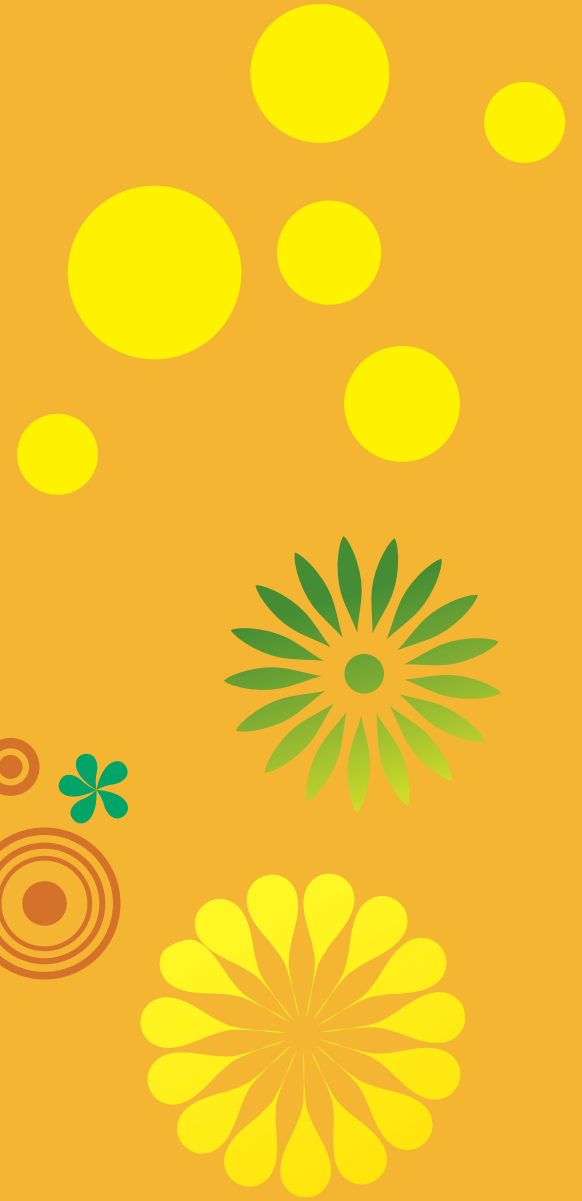
**Working with others:** We value and are committed to quality and broad participation and collaboration with other like minded individuals or organisations.

**Commitment to Social Justice Philanthropy:** We are committed to philanthropy that promotes social justice, integrity and respect for others in order to uphold the public trust and secure the rights of poor people

**Honesty and Transparency:** We value and promote transparency, honesty and efficiency in our dealings with others irrespective of their social standing.

**Learning and Innovation:** We value reflection, learning and innovation and strive to evolve, promote and share best practices with others

**Equity:** We strive to promote and address equity in all our endeavours in pursuing the goals and objectives of the Foundation.



FOR MORE INFORMATION, CONTACT:

The Chief Executive Officer  
Kenya Community Development Foundation  
P.O Box 10501-00100  
Nairobi

Tel: +254 20 3540239/ 020 8067440, 020 8067441, 020 8067442  
Office Cell : +254 722 168480/ 736 449 217  
Fax: +254 20 8067440  
[www.kcdf.or.ke](http://www.kcdf.or.ke)

